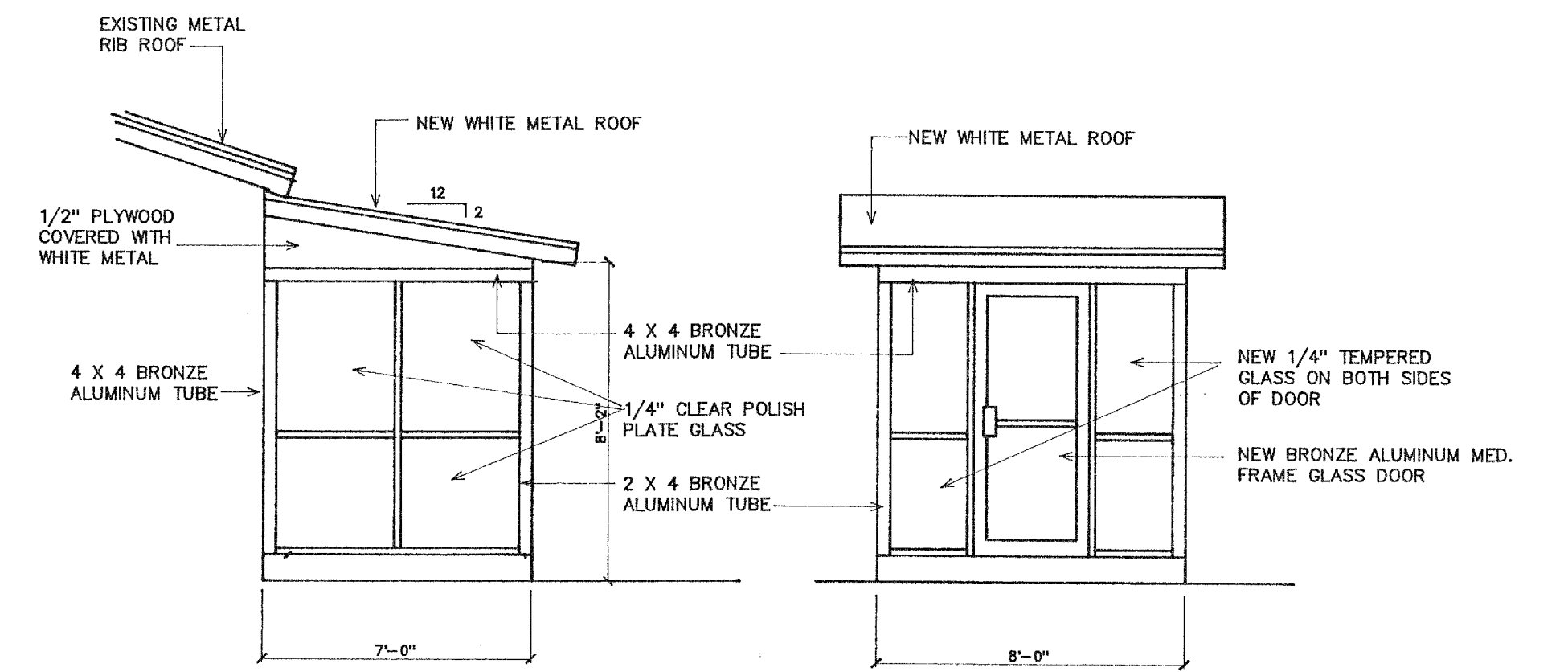


NOTES: [L]

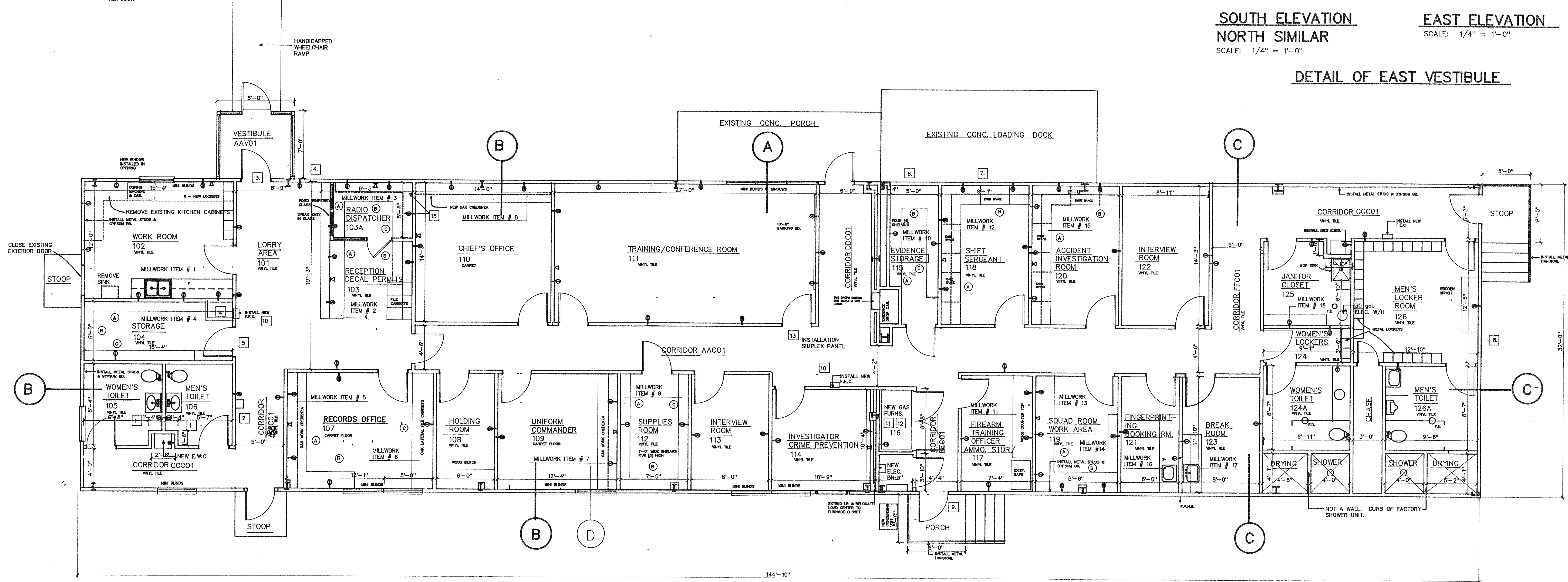
1. REMOVE EXISTING TOILET FIXTURES AND REPLACE WITH NEW FIXTURES.
2. REMOVE EXISTING PIPING WHERE EXISTING ICE MACHINE WAS LOCATED.
3. REMOVE BRACES FROM DOOR, PATCH HOLES, REPLACE GLASS, INSTALL NEW LOCKSET.
4. RELOCATE TELEPHONE PANEL.
5. REFINISH DOOR & INSTALL AT MECH. ROOM OFF WORK ROOM.
6. REMOVE EXISTING STEEL DOOR & CLOSE OPENING.
7. REMOVE EXISTING ROLLUP DOOR & OPERATOR ASSEMBLY, CLOSE OPENING.
8. REMOVE EXISTING FAN & CLOSE OPENING.
9. REMOVE EXISTING VENTILATION LOUVER & ENLARGE OPENING TO RECEIVE NEW DUCT.
10. FEC - FIRE EXTINGUISHER CABINETS ROUGH-IN 12-1/4"W. X 27-1/4"H. GYPSUM BEHIND FEC SHOULD BE 5/8" THICK. MOUNT BOTTOM OF CABINET AT 40" AFF.
11. COORDINATE CONSTRUCTION OF FURNACE CLOSET WALLS AND FRAME WITH RANDY WALLACE.
12. FURNACE CLOSET DOORS ARE 6'-0" X 4'-8" NOMINAL.
13. COORDINATE INSTALLATION W/ ELECTRICIANS.
14. PLENUM DOES NOT REQUIRE GYPSUM BD. ON INTERIOR FACE. A GYPSUM BD. CEILING IS REQUIRED INSTALL A 24"W. X 30"H. RETURN AIR GRILLE IN THE SOUTH WALL BELOW FEC.
15. COORDINATE INSTALLATION OF 2 EA. CONTROL PANELS. EACH PANEL IS 22-1/4"W. X 38"H X 7-3/4"D.



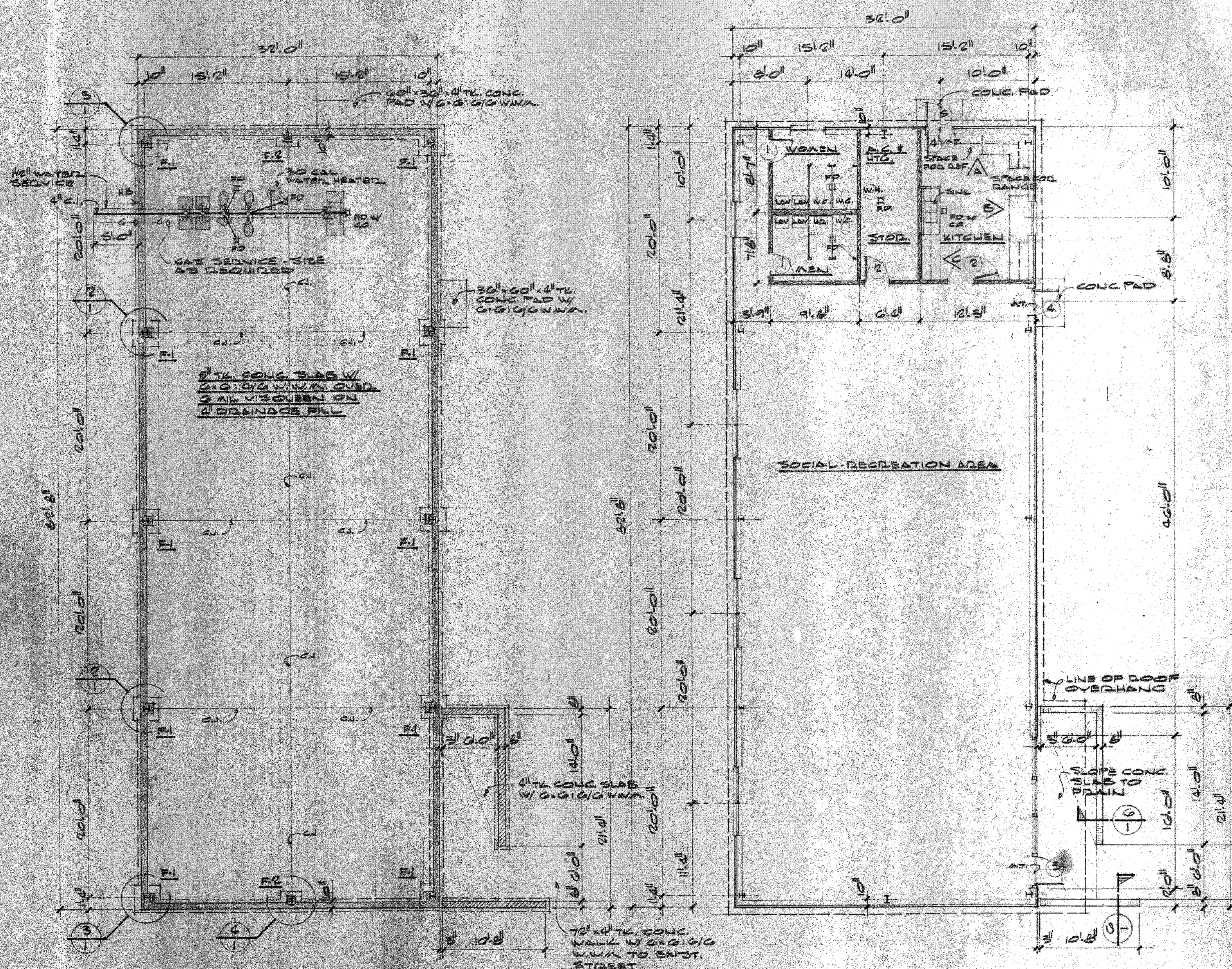
SOUTH ELEVATION
NORTH SIMILAR
 SCALE: 1/4" = 1'-0"

EAST ELEVATION
 SCALE: 1/4" = 1'-0"

DETAIL OF EAST VESTIBULE



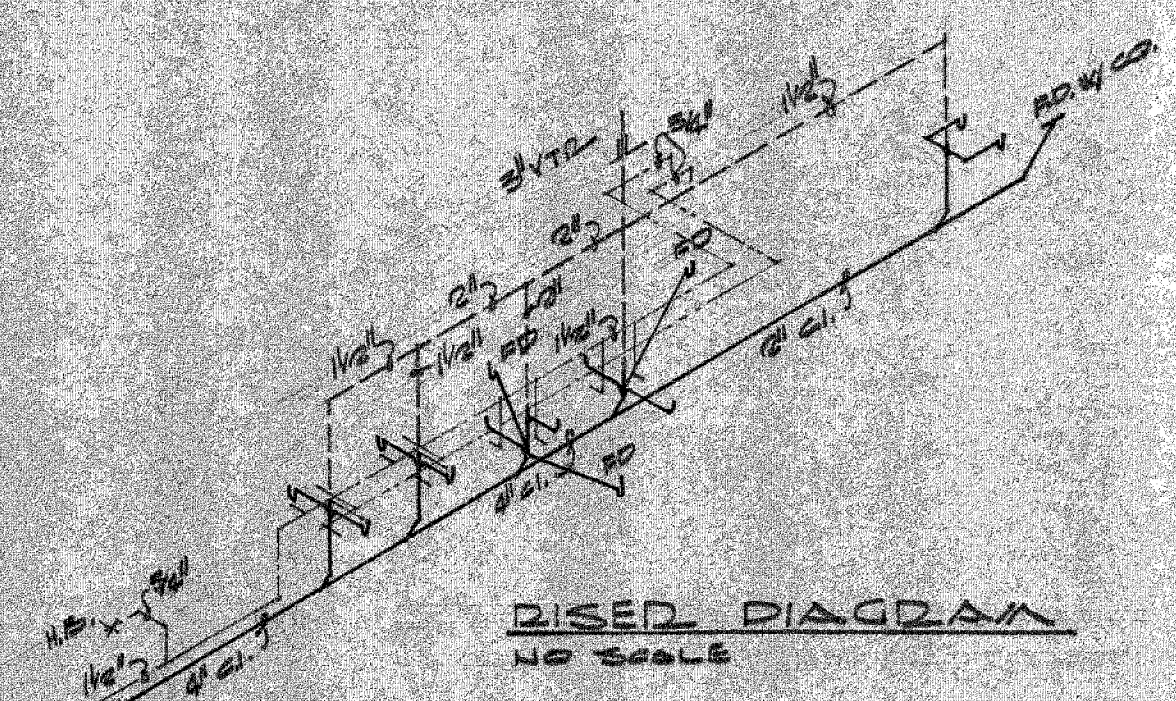
FLOOR PLAN SCALE: 3/16" = 1'-0"



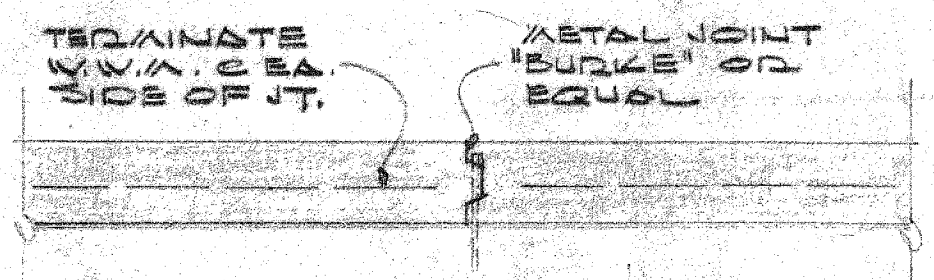
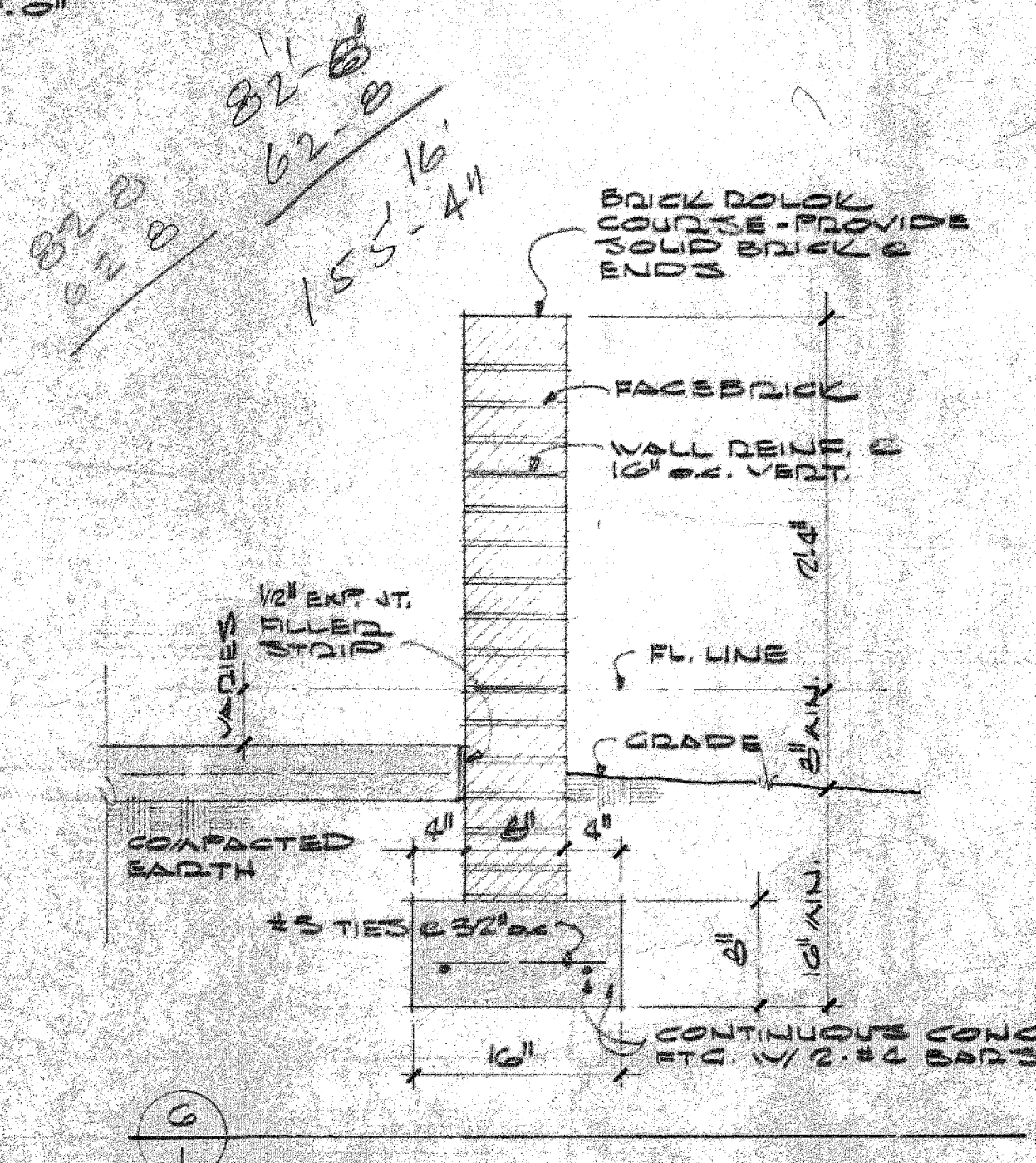
FOUNDATION & PLUMBING PLAN
SCALE: 1/8" = 1'-0"

FLOOD PLAN 2,045 SQ. FT.
SCALE: 1/8" = 1'-0"

MARK	SIZE	REINFORCING
F-1	2'-0" x 2'-0" x 1'-0"	4-#4 BOTH WAYS
F-2	2'-0" x 2'-0" x 1'-0"	2-#4 BOTH WAYS



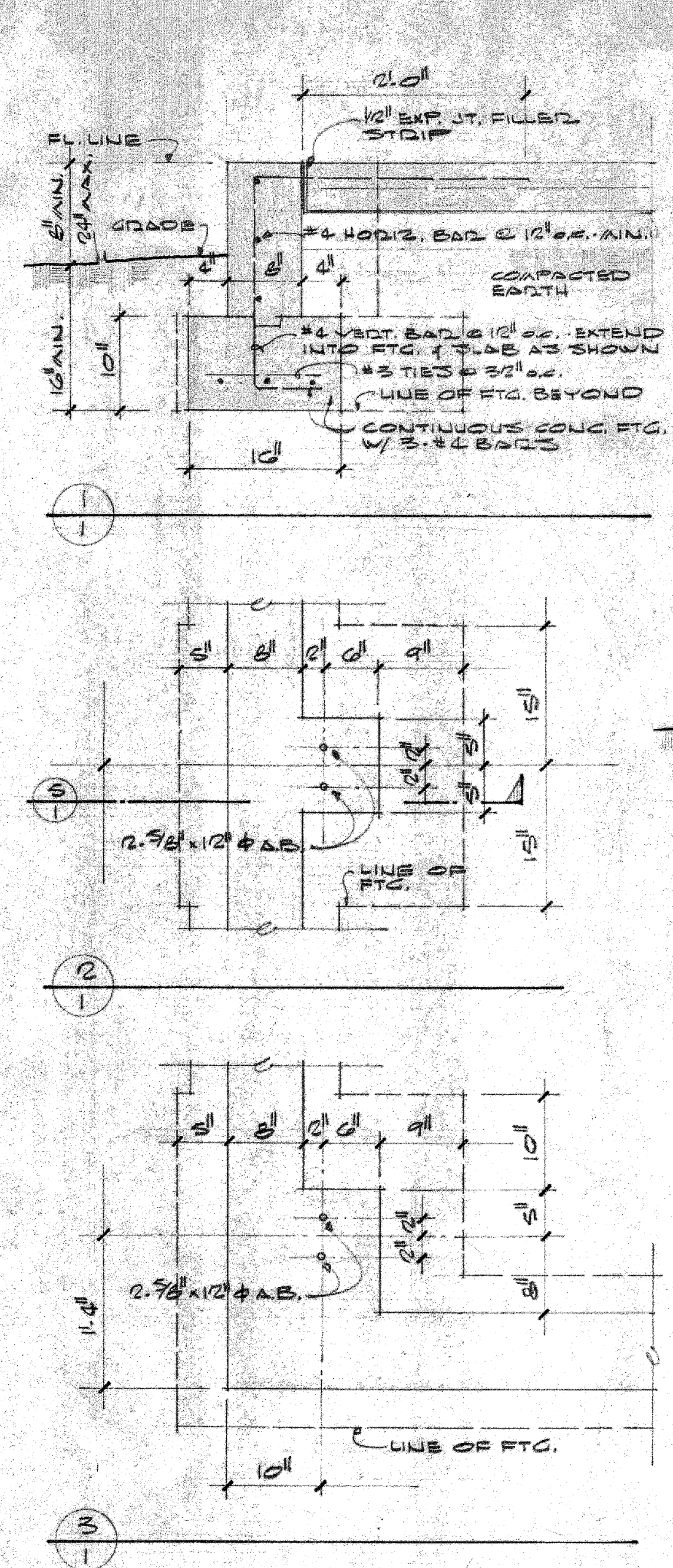
RISED DIAGRAM
NO SCALE



TYP. CONSTRUCTION JOINT DETAIL
SEE FOUNDATION PLAN FOR LOCATIONS

MATERIALS LEGEND

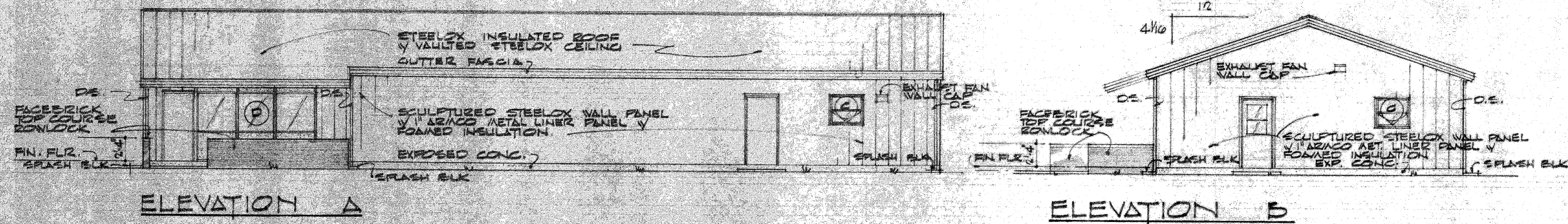
	CONCRETE
	FACEBRICK
	STUD WALL



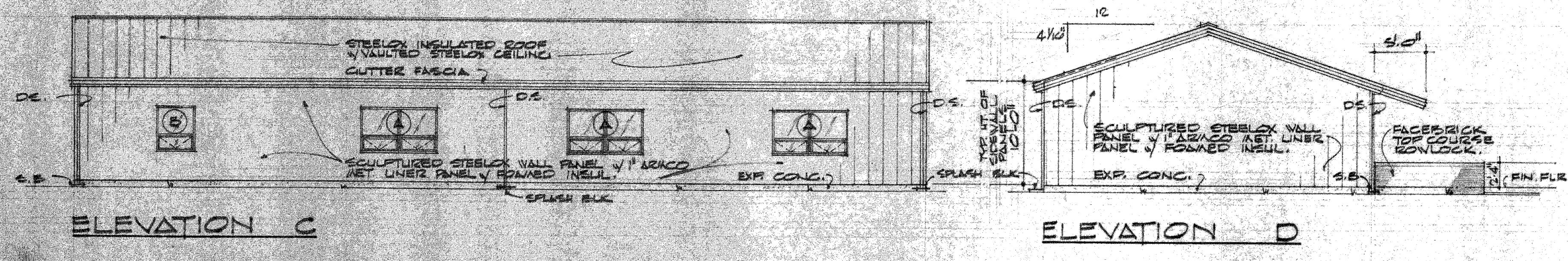
- GENERAL NOTES:**
- VERIFY COLUMN & ANCHOR BOLT SPACING W/ METAL BLDG. CONTRACTOR
 - PROVIDE TIE BARS OR HAIRPIN TIES AS REQ'D. BY BLDG. CONTRACTOR
 - SLOPE FINISH GRADE AWAY FROM BLDG. TO DRAIN
 - ALL INTERIOR WALLS TO BE 2x4 STUDS @ 16" O.C. W/ 1/2" SHEETROCK OR PLYD. PANELING OVER 1/2" SHEETROCK BA. SIDE EXCEPT PLUMBING WALL (2x6 STUDS @ 12" O.C.)
 - CERAMIC TILE WAINSCOT & FLOOR & DURAL (MENS TOILET) UP 48" & WALL & OUT 24" ON FL.
 - METAL TOILET PARTITIONS @ MEN & WOMEN TOILETS
 - EXACT LOCATION OF BLDG. TO BE APPROVED @ SITE BY OWNER & ARCHITECT

COMMUNITY CENTER

DATE 8-15-66	COMMUNITY BLDG. FOR INDIAN VILLAGE ARKANSAS STATE COLLEGE JONESBORO ARKANSAS	SHEET NUMBER 1
DRAWN BY D.F.F., L.H.	STUCK, FRIER, LANE & SCOTT, INC., ARCHITECTS 601 SOUTHWEST DRIVE • JONESBORO, ARKANSAS	COMMISSION NUMBER 45966
CHECKED BY W.L.		
REVISIONS		



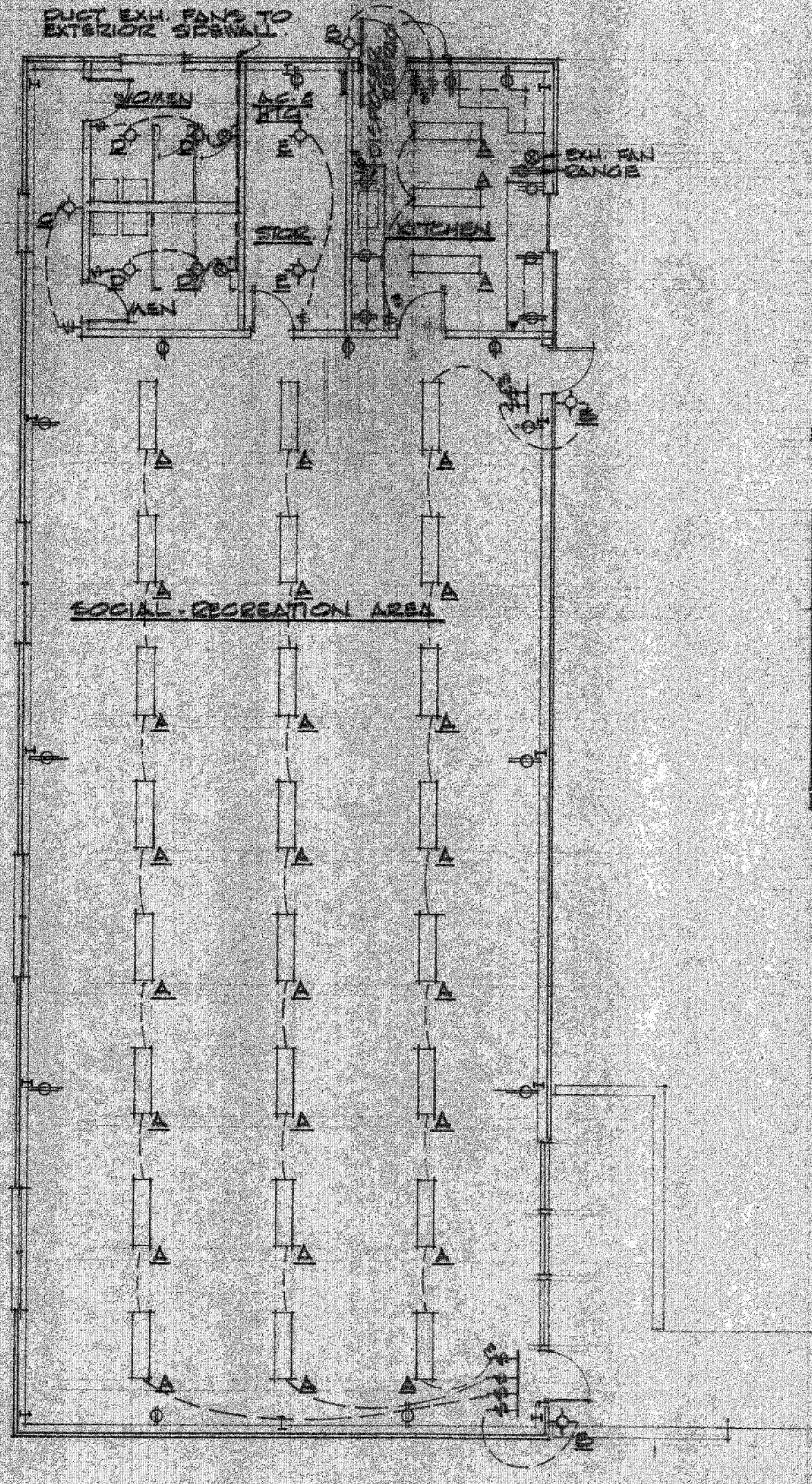
DOOR SCHEDULE		
MARK	SIZE	MATERIAL
1	2'-0" x 6'-6"	WOOD - HOLLOW CORE
2	2'-6" x 6'-6"	SAME
3	3'-0" x 7'-0"	STEEL - FLUSH DOOR
4	3'-0" x 7'-0"	STEEL - w/ GLASS PANEL
5	3'-0" x 7'-0"	ALUMINUM SCREEN DOOR



WINDOW SCHEDULE		
MARK	SIZE	ARAGO NUMBER
A	4'-0" x 4'-5"	3341 HV (MULTIPLE UNIT)
B	4'-0" x 4'-5"	3341 HV (SINGLE UNIT)
C	4'-0" x 3'-1"	3329 HV (SINGLE UNIT) OBFUSCURE GL. AT WOMEN
D	4'-0" x 10'-0"	WV10 (MULTIPLE UNIT)

NOTE: PROVIDE INSECT SCREENS AT ALL OPERATING ENDS.

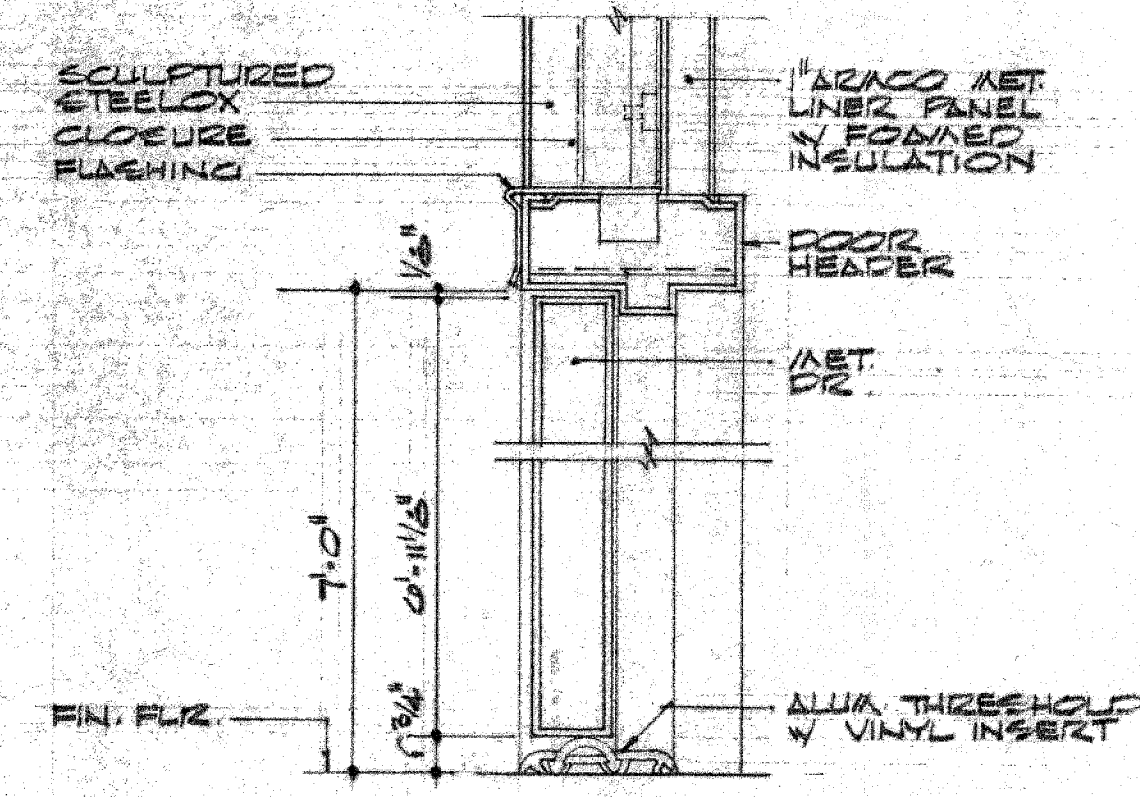
EXTERIOR ELEVATIONS SCALE 1/8" = 1'-0"



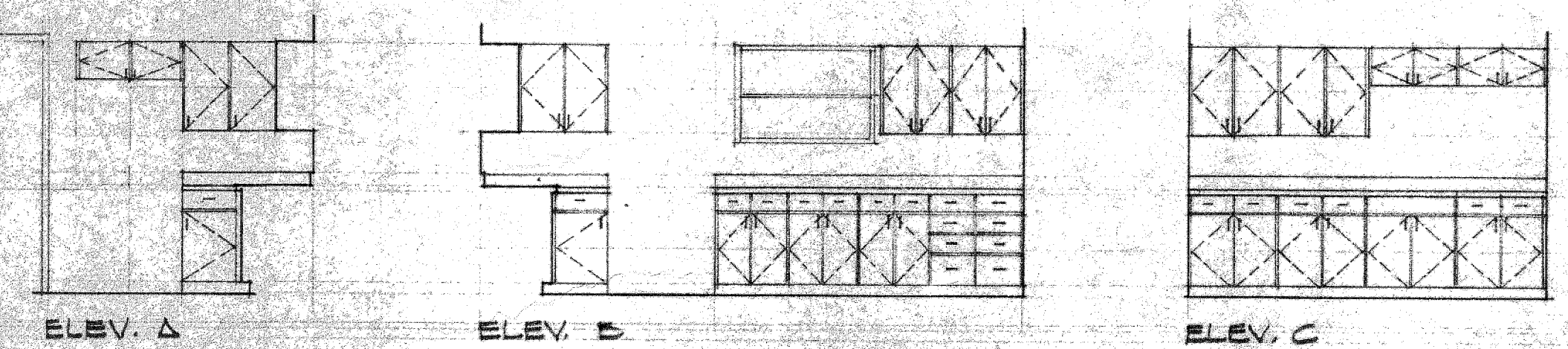
ELECTRICAL FIXTURE SCHEDULE		
MARK	FIXTURE	LUMPS
A	CELSIUS CYA 240	2-40W R.F.
B	PRESCOLITE 4020	1-100W
C	PRESCOLITE 4025	2-100W
D	PRESCOLITE 7009	2-60W
E	POREPLAN ENAMEL RECEPTACLE	1-100W

EXHAUST FANS: MEN & WOMEN - NUTONE #3330
KITCHEN - NUTONE #3310

ELECTRICAL SYMBOL LEGEND	
[Symbol]	FLUORESCENT FIXTURE
[Symbol]	INCANDESCENT - CLG. & WALL INTD.
[Symbol]	CONVENIENCE OUTLET
[Symbol]	EXHAUST FAN
[Symbol]	SWITCH - SINGLE POLE SINGLE THROW, THREE WAY



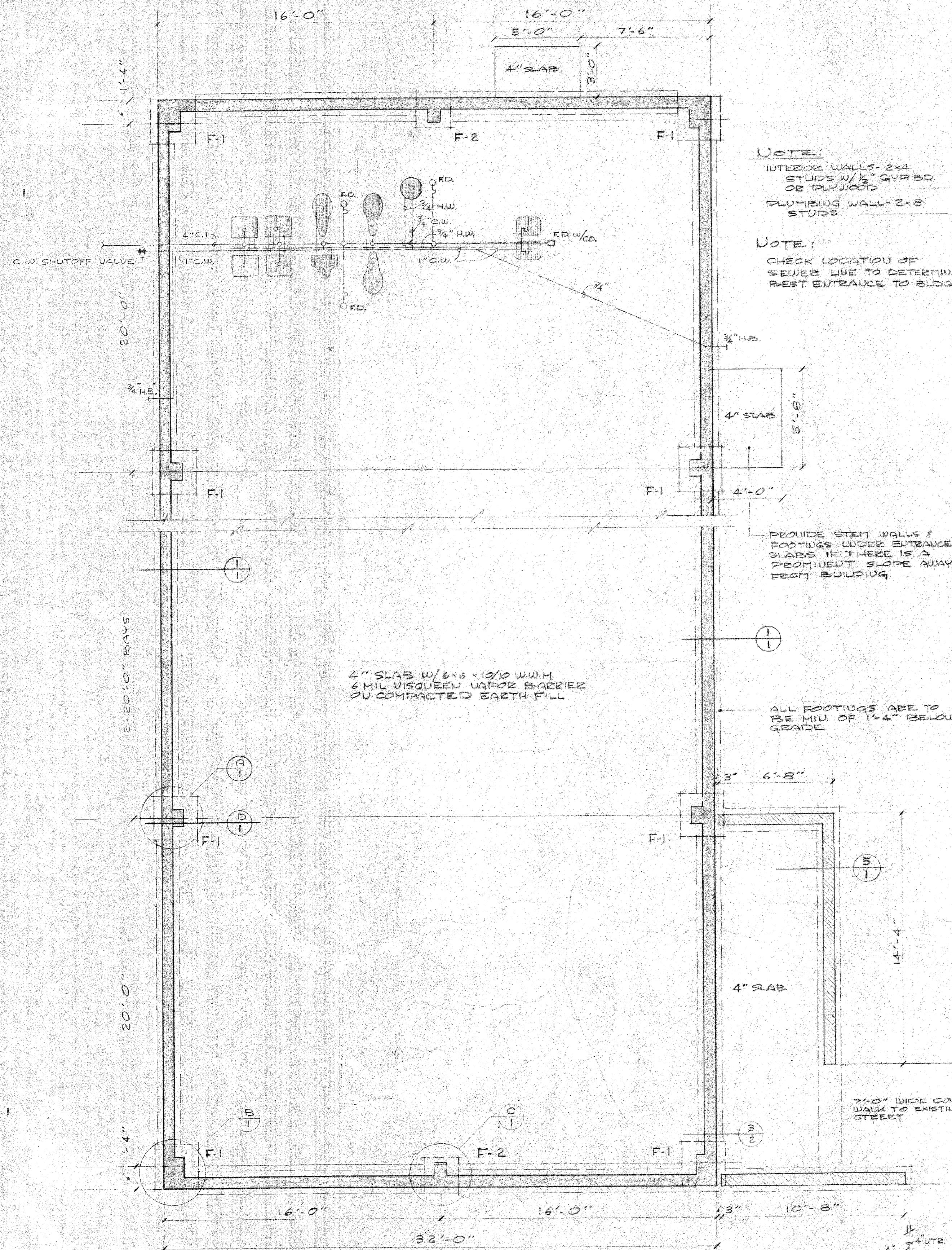
TYPICAL EXTERIOR DR. FRAME SCALE 3/8" = 1'-0"



KITCHEN CABINET ELEVATIONS SCALE 1/4" = 1'-0"

ELECTRICAL FLOOR PLAN 1/8" = 1'-0"

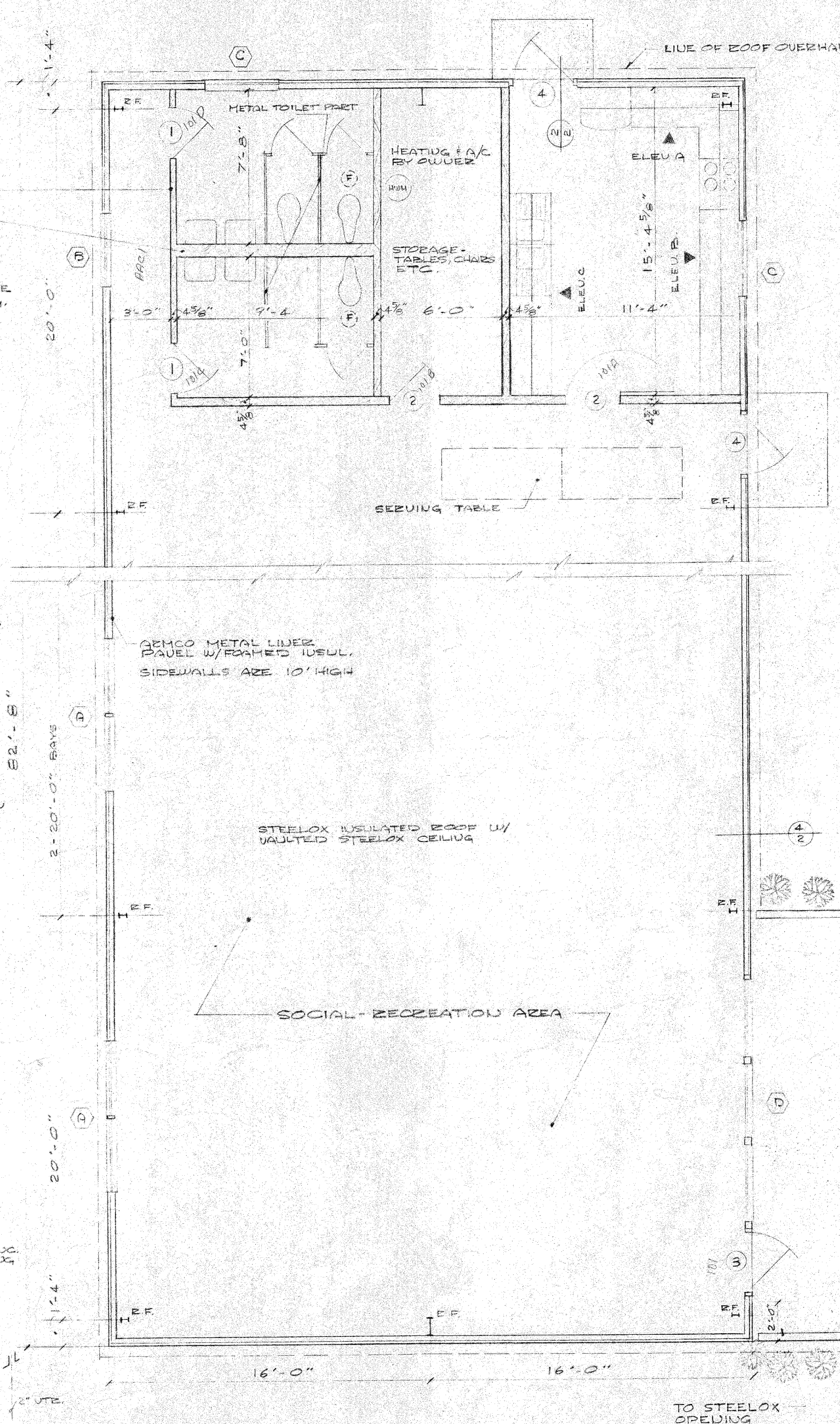
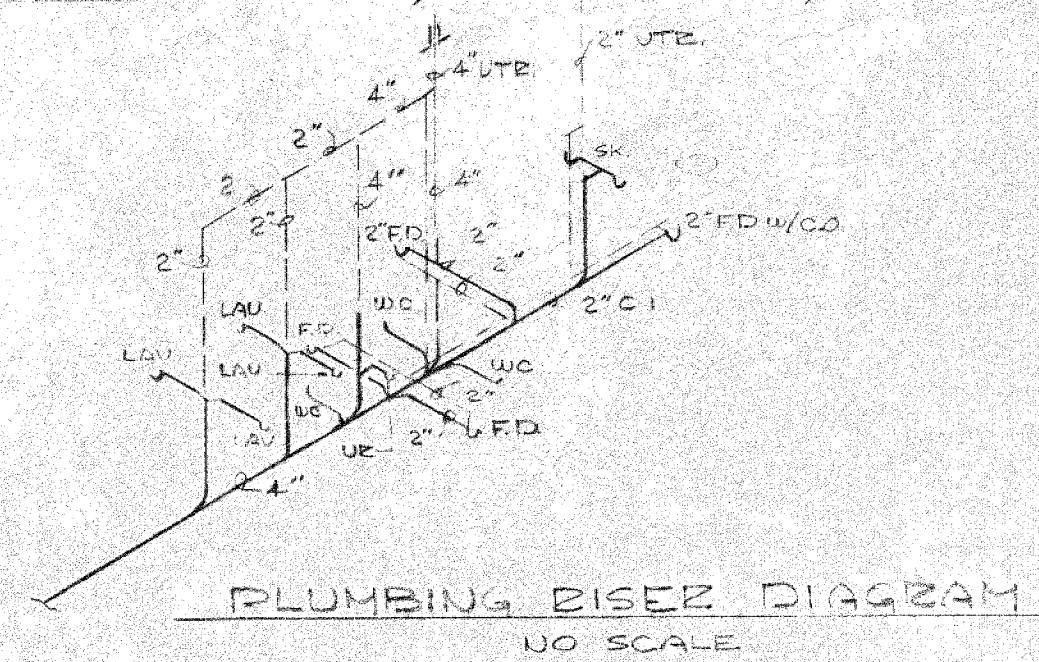
	DATE 5-15-66	COMMUNITY BLDG. FOR INDIAN VILLAGE	SHEET NUMBER
	DRAWN BY K.F.F.J.A.	ARKANSAS STATE COLLEGE JONESBORO, ARKANSAS	20
	CHECKED BY W.L.		STUCK, FRIER, LANE & SCOTT, INC., ARCHITECTS 601 SOUTHWEST DRIVE • JONESBORO, ARKANSAS
	REVISIONS		



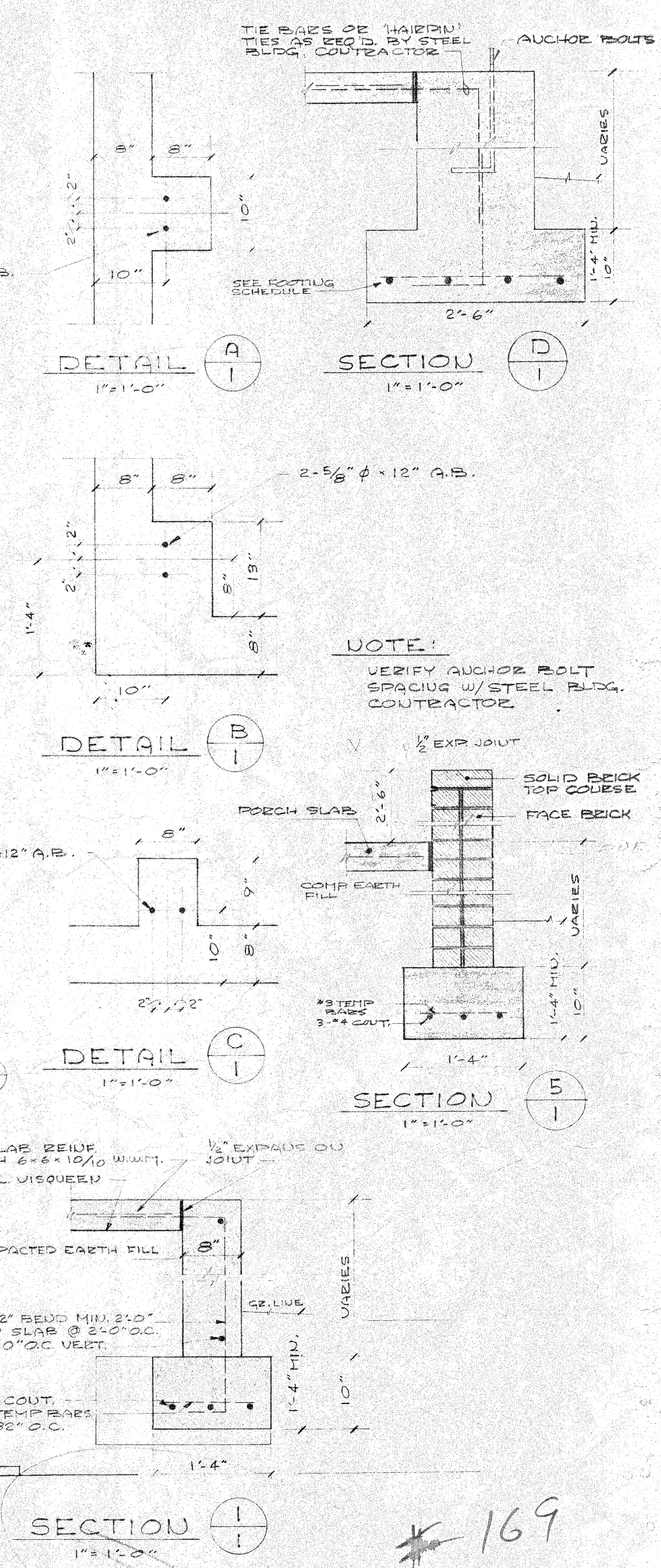
FOOTING & FOUNDATION PLAN
1/8" = 1'-0"

RIGID FRAME FOOTING SCHEDULE

MARK	NO.	SIZE	REINFORCING
F-1	10	2'-6" x 2'-6" x 1'-0"	4-#4 BOTH WAYS
F-2	2	2'-0" x 2'-0" x 1'-0"	2-#4 BOTH WAYS



FLOOR PLAN
1/8" = 1'-0"



NOTE: EXACT LOCATION OF BUILDING TO BE APPROVED AT SITE BY OWNER & ARCHITECT

* 169

DATE 2-15-66	COMMUNITY BUILDING INDIAN VILLAGE ARKANSAS STATE COLLEGE	SHEET NUMBER 1	
DRAWN BY Z.F.R.		STUCK, FRIER, LANE & SCOTT, INC., ARCHITECTS 601 SOUTHWEST DRIVE • JONESBORO, ARKANSAS	
CHECKED BY W.L.			COMMISSION NUMBER 45966
REVISIONS			