

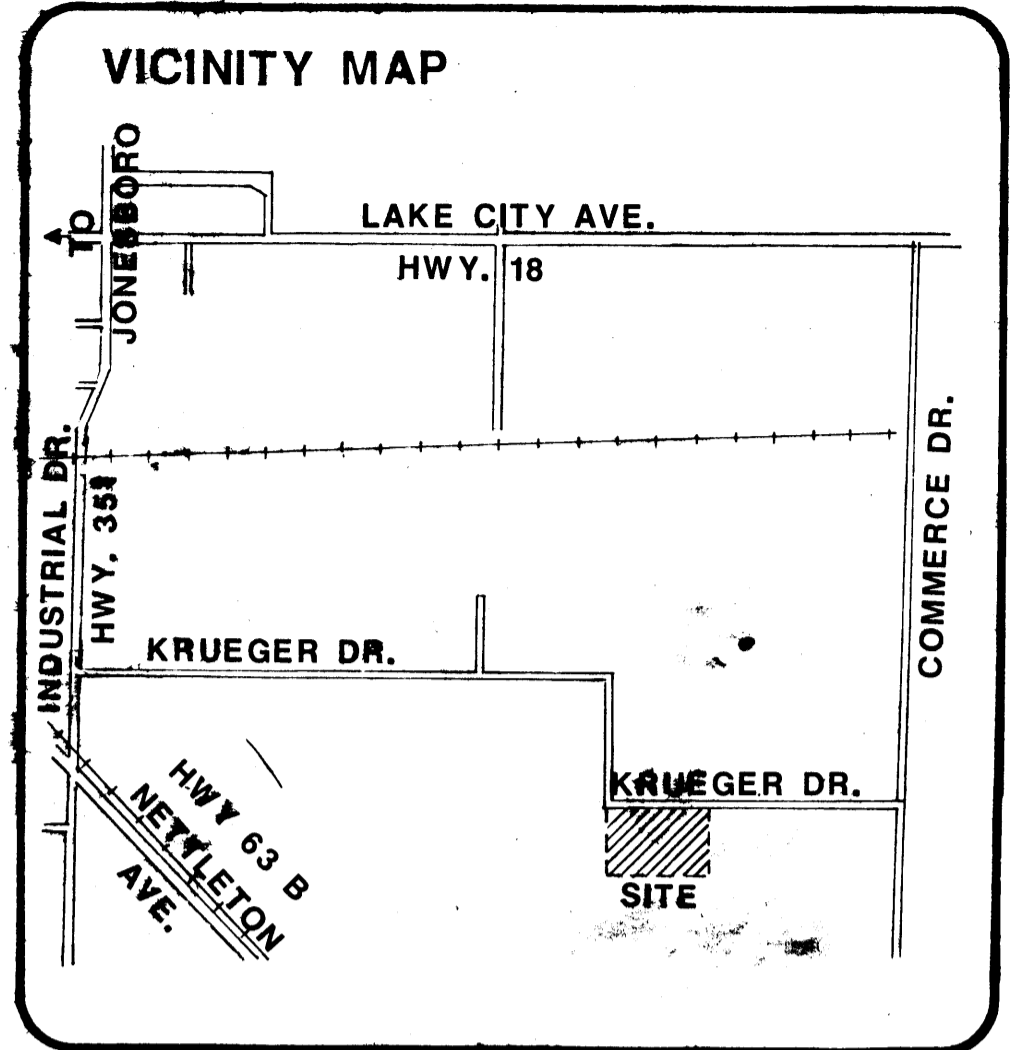
Delta Center for Econ. Dev. #81

EAST ARKANSAS BUSINESS INCUBATOR SYSTEM FACILITY

ARKANSAS STATE UNIVERSITY JONESBORO, ARKANSAS

Arnold And Stacks Architects, P.A.

3850



527 west warhington
p. o. box 69
jonesboro, ar. 72401
(501) 932-3330

901 central
p. o. box 1560
hot springs, ar. 71902
(501) 624-4678

project no.
86236
date
06/26/85

DRAWING INDEX

COVER SHEET

- 1.1 SURVEY
- 1.2 SITE PLAN
- 2.1 FLOOR PLANS
- 3.1 EXTERIOR ELEVATIONS, BUILDING SECTIONS, ROOF PLAN
- 4.1 WALL SECTIONS
- 4.2 WALL SECTIONS
- 5.1 FOUNDATION PLAN, ROOF FRAMING PLAN
- 6.1 HVAC PLANS
- 6.2 PLUMBING PLAN, FIRE PROTECTION PLAN
- 6.3 PLUMBING RISER
- 7.1 POWER PLAN, ELECTRICAL RISER
- 7.2 LIGHTING PLANS

Alternate Number One: Omit Dock Equipment: Omit all materials and labor required for Dock Leveler and Dock Shelter specified in this Project Manual.

Alternate Number Two: Change Concrete Paving to Crushed Rock. Omit concrete paving in the areas noted as such on the Site Plan. These areas to received grading as shown and 8" crushed rock as specified in this Project Manual. Omit Striping shown on the Site Plan.

Alternate Number Three: Omit Condensing Units: Omit three (3) 10ton Condensing Units noted as "CU-1" on the Drawings. Omit the electrical lines and connections for these units. Do not omit the breakers specified for these units. Do not omit the Concrete Pads shown on the refrigerant lines.

NOTE: ALL SCHEDULES AND DETAILS ARE LOCATED IN THE PROJECT MANUAL.

SYMBOLS LEGEND

	ENLARGED PLAN NO.		DOOR SCHEDULE NO. SEE PROJECT MANUAL		EQUIPMENT
	BUILDING SECTION		WINDOW FRAME TYPE		LEVEL LINE
	WALL SECTION		MILLWORK ELEVATION NO.		GENERAL NOTE
	DETAIL		MILLWORK ITEM NO.	CLASSROOM 106	ROOM NAME ROOM NUMBER
	STRUCTURAL GRID		TOILET ACCESSORY		

MATERIALS LEGEND

PLAN/SECTION	ELEVATION				
	COMPACT FILL		BLOCKING WOOD		BRICK
	POROUS FILL		PLYWOOD		GLASS
	CAST-IN-PLACE/ PRECAST CONCRETE		BATT/LOOSE FILL INSULATION		METAL PANELS
	LIGHTWEIGHT CONCRETE		RIGID INSULATION		CONCRETE/PLASTER FINISH
	SAND/MORTAR/ PLASTER/ CUT STONE		SPRAY/FOAM INSULATION		SHINGLES/SIDING
	CONCRETE MASONRY UNIT		FIRE BRICK		COMMON FACE BRICK
	FINISH WOOD		ROUGH WOOD		

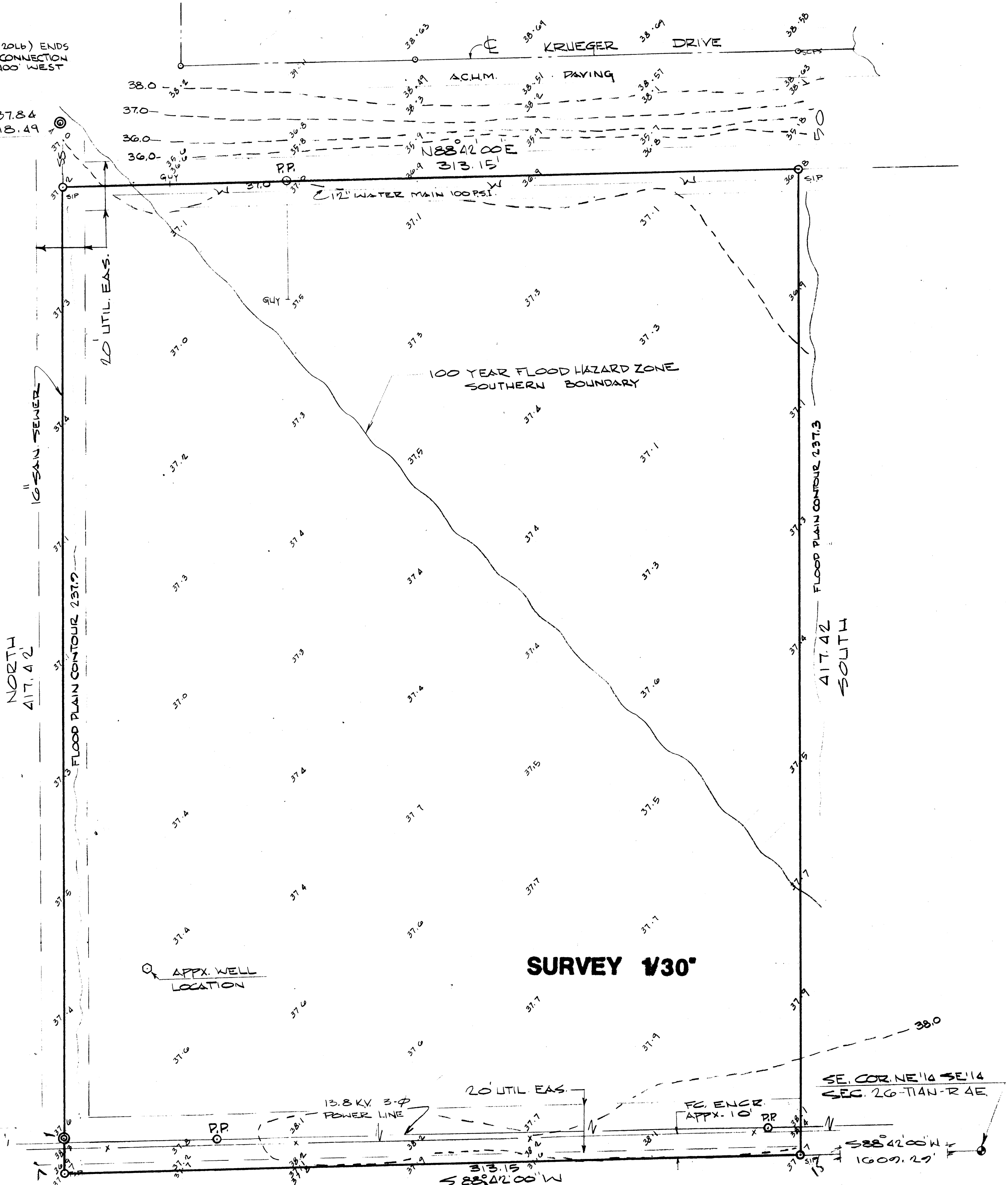
COVER
T-2 T2 100

NOTES:
 ARK-LA GAS MAIN (4" 20LB) ENDS
 AT KENNY MFG. SERV CONNECTION
 APPX. 700' NORTH & 400' WEST
 OF N.W. COR OF PROP.



B.M. RIM 237.84
 INV. 218.49
 SAN. M.H.

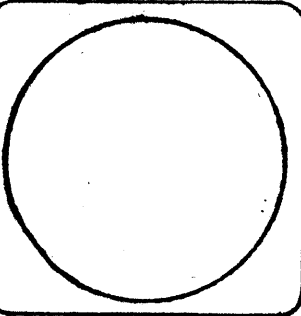
0' 15' 30' 60'
 BAR SCALE
 SCALE 1" = 30'



SURVEY 1/30'

1.1		
T-1	T-1	100
S-1	S-1	100
S-2	S-2	100

**EAST ARKANSAS BUSINESS
 INCUBATOR SYSTEM FACILITY**
 ARKANSAS STATE UNIVERSITY
 JONESBORO, ARKANSAS

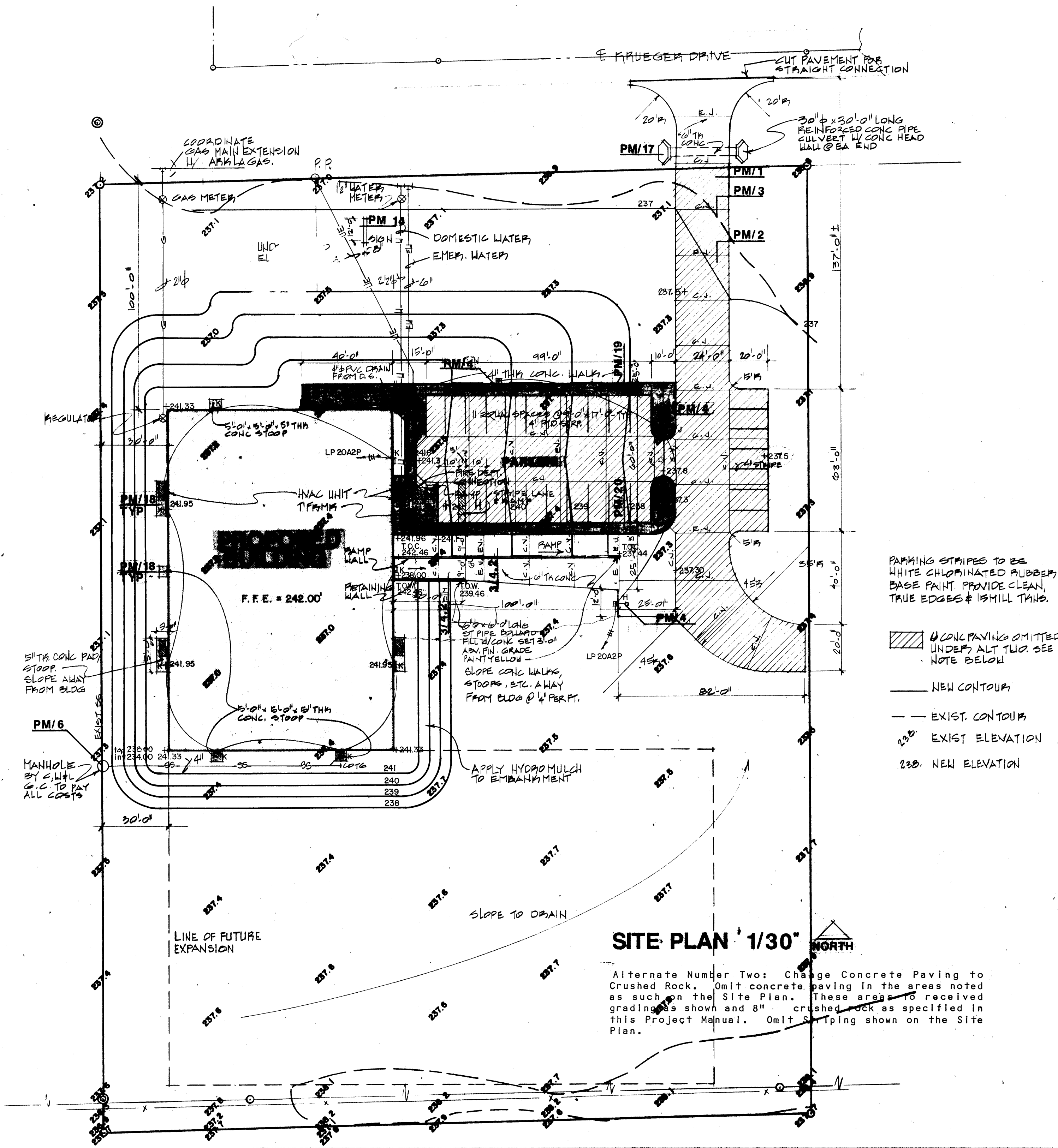


587 West Washington
 P. O. Box 88
 Jonesboro, AR 72401
 (501) 938-3530 (501) 654-4678

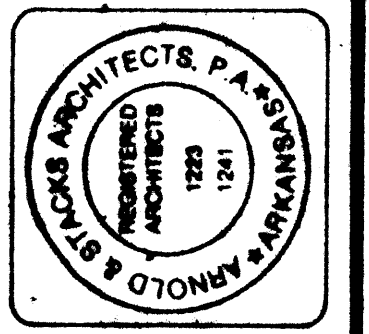
Product no.
 02236
 02/25/88

**Arnold
 + Stacks
 architects, pa**

1.1



EAST ARKANSAS BUSINESS INCUBATOR SYSTEM FACILITY
 ARKANSAS STATE UNIVERSITY
 JONESBORO, ARKANSAS



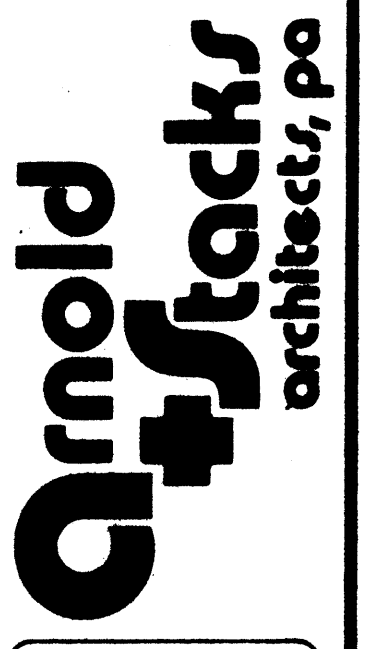
377 West Washington St., Jonesboro, Ark. 72401
 Telephone: (501) 938-3330 (501) 938-4978
 Fax: (501) 938-1580
 E-mail: info@astacks.com

- PARKING STRIPES TO BE WHITE CHLOMINATED RUBBER BASE PAINT. PROVIDE CLEAN, TRUE EDGES & 1/2" THICK.
- CONC PAVING OMITTED UNDER ALT TWO. SEE NOTE BELOW
- NEW CONTOUR
- EXIST. CONTOUR
- 237' EXIST ELEVATION
- 238' NEW ELEVATION

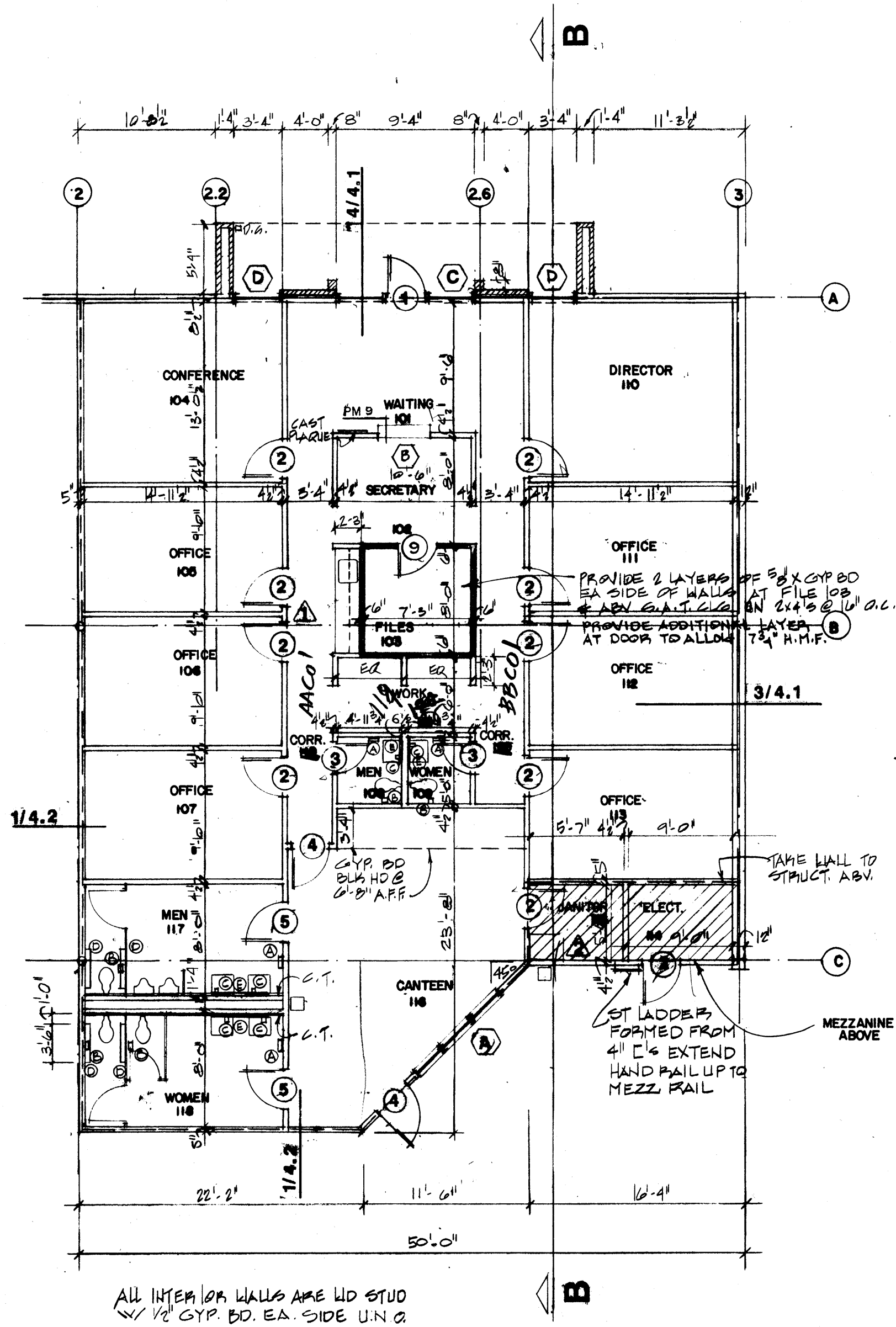
1.2	T-1	T-1	100
S-1	S-1	100	
S-3	S-3	100	

SITE PLAN '1/30"

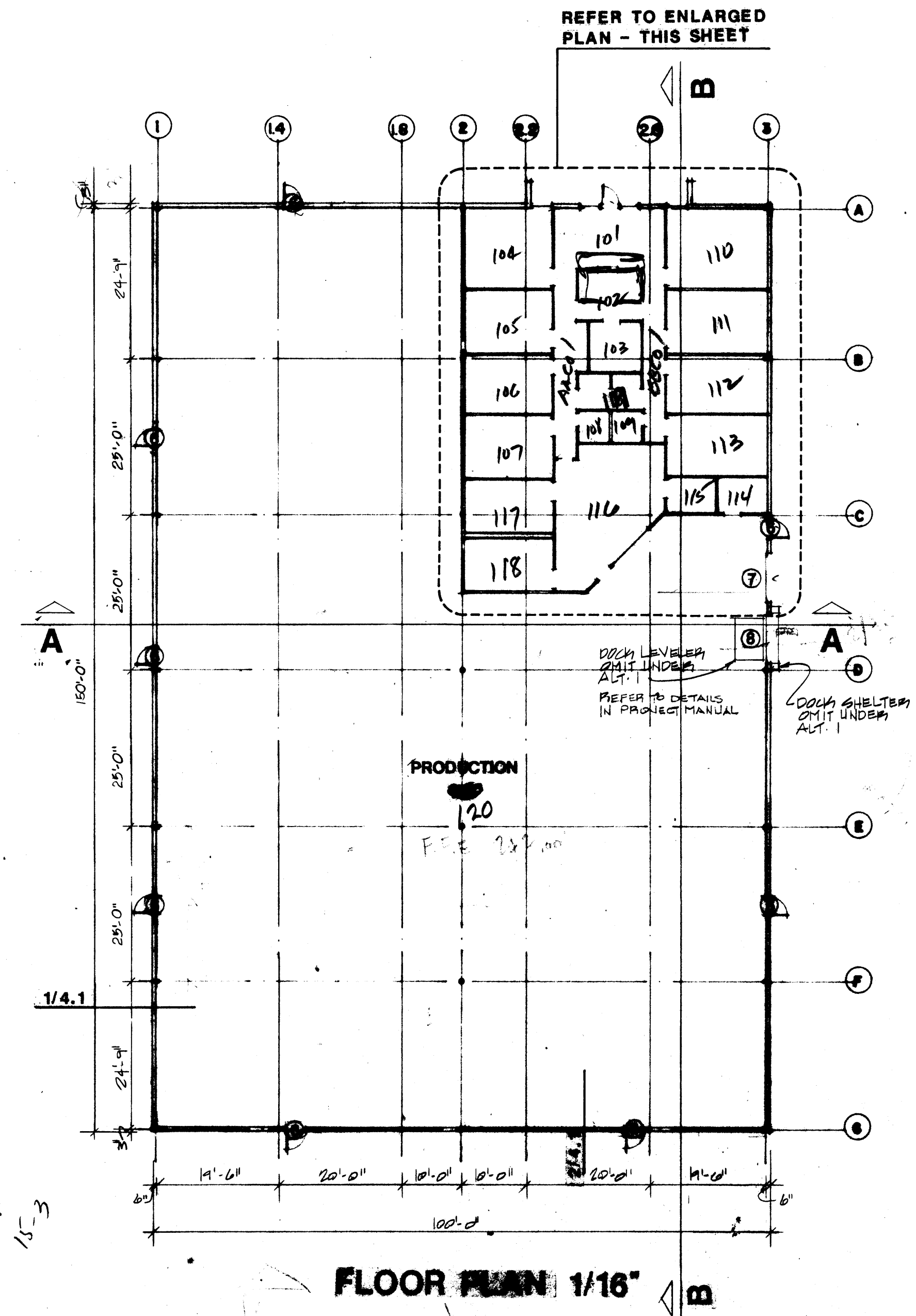
Alternate Number Two: Change Concrete Paving to Crushed Rock. Omit concrete paving in the areas noted as such on the Site Plan. These areas to receive gradings shown and 8" crushed rock as specified in this Project Manual. Omit striping shown on the Site Plan.



Mark	Item	Mounting
A	Paper Towel Dispenser	48" A.F.F.
B	Toilet Tissue Dispenser	19" A.F.F.
C	Soap Dispenser	42" A.F.F.
D	Grab Bars	34" A.F.F.
E	Mirror 36" x 36"	40" A.F.F. at bottom



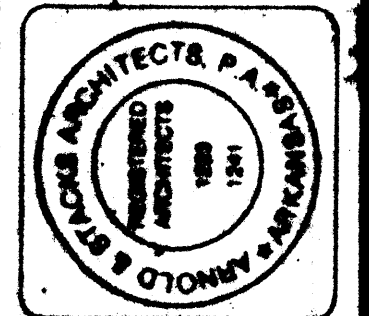
OFFICE FLOOR ENLARGED PLAN 1/8"



FLOOR PLAN 1/16"

E.1	T-1	T-1	100
P-1	P-1	P-1	100
P-2	P-2	P-2	100
N-1	N-1	N-1	100

EAST ARKANSAS BUSINESS INCUBATOR SYSTEM FACILITY
ARKANSAS STATE UNIVERSITY
JONESBORO, ARKANSAS

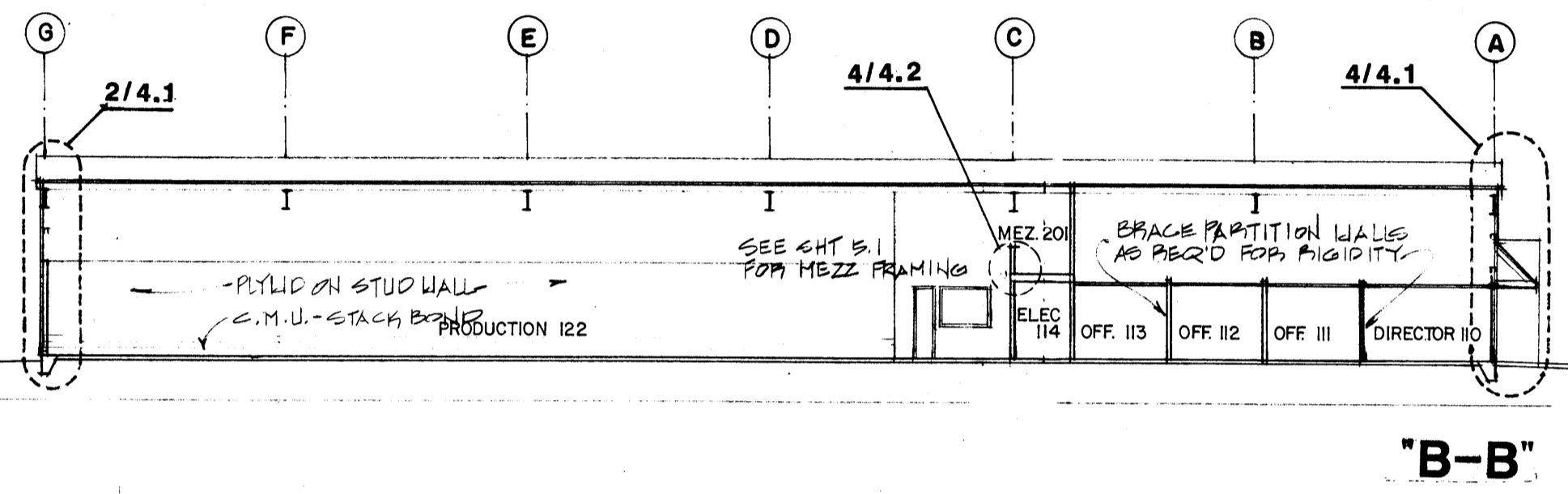
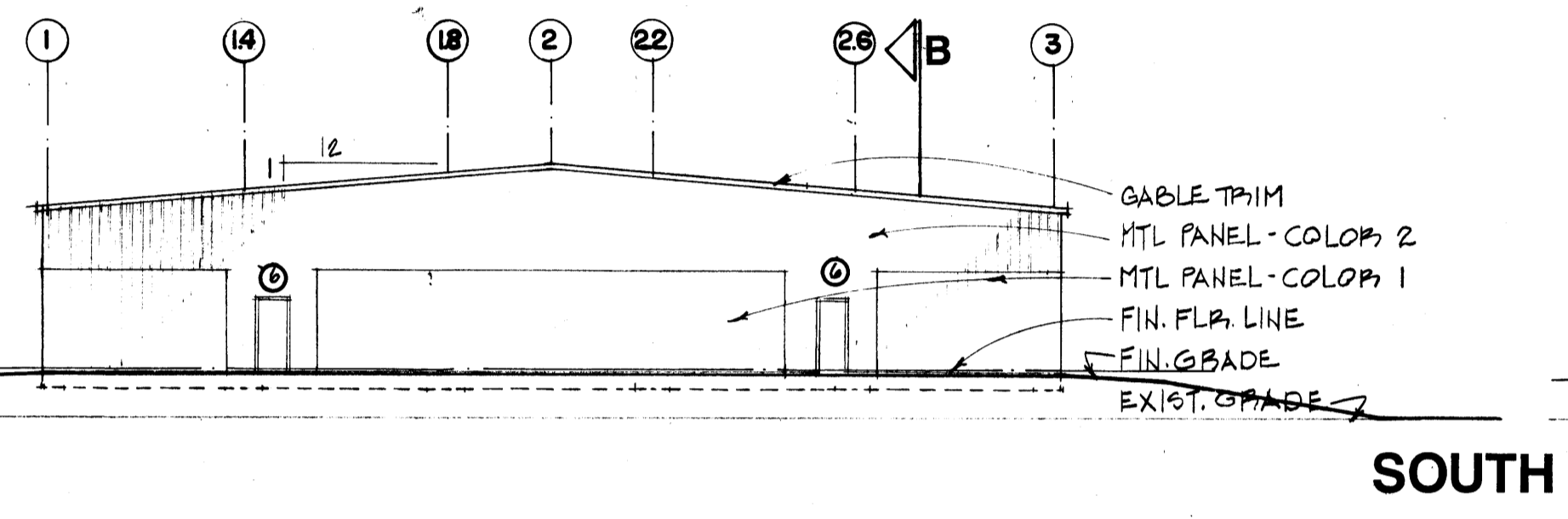
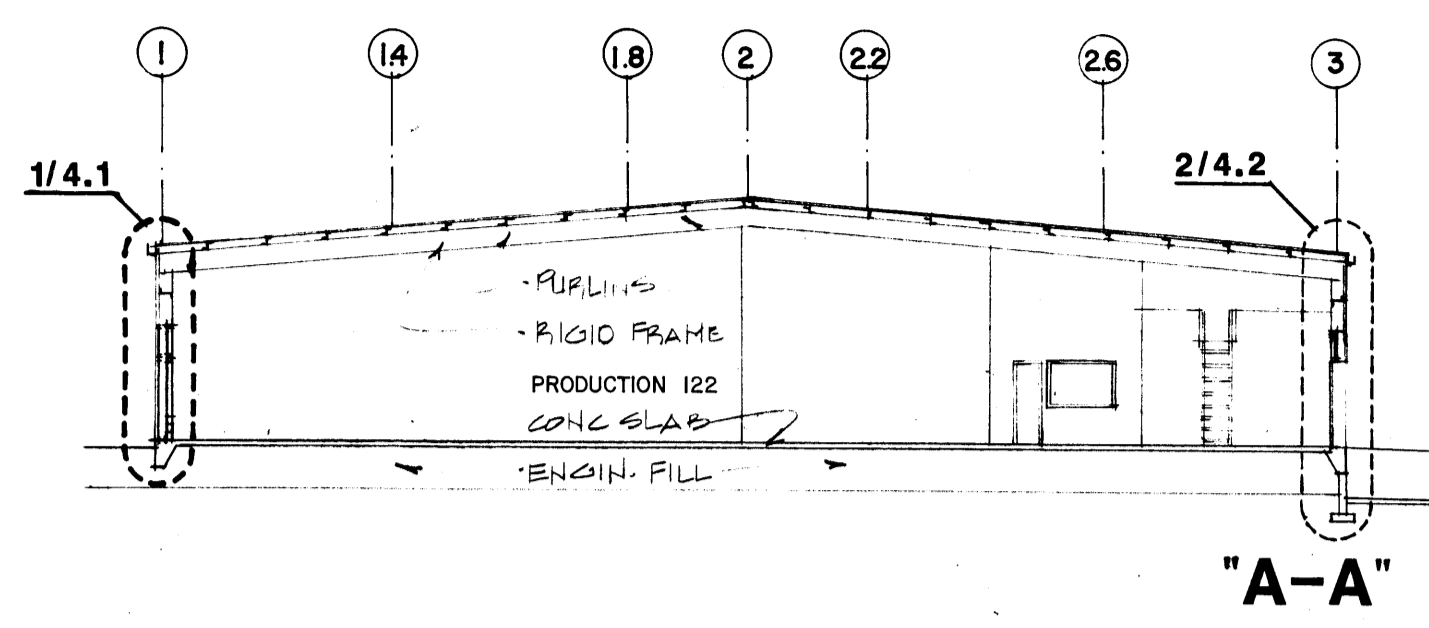
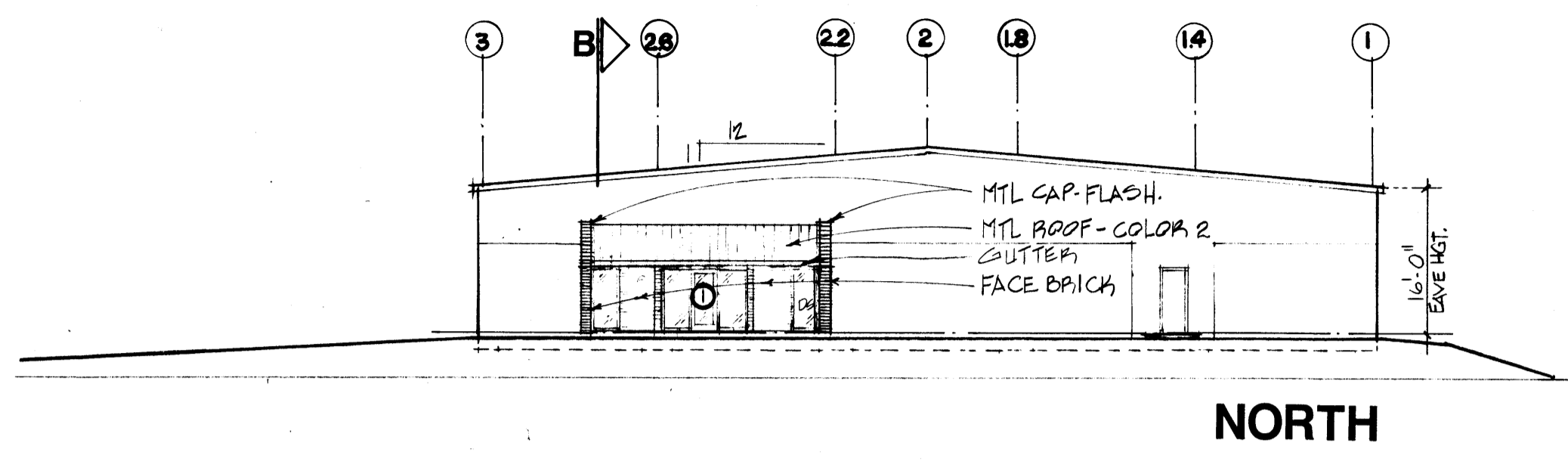


901 Central
 P.O. Box 50
 Jonesboro, AR 72401
 (501) 938-2300 (501) 938-4328

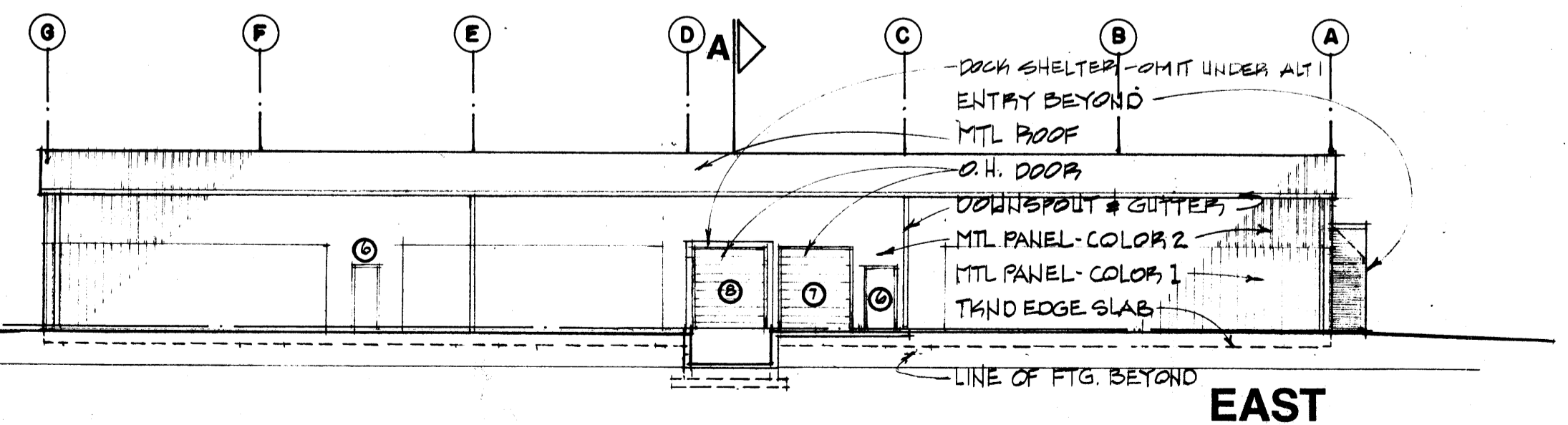
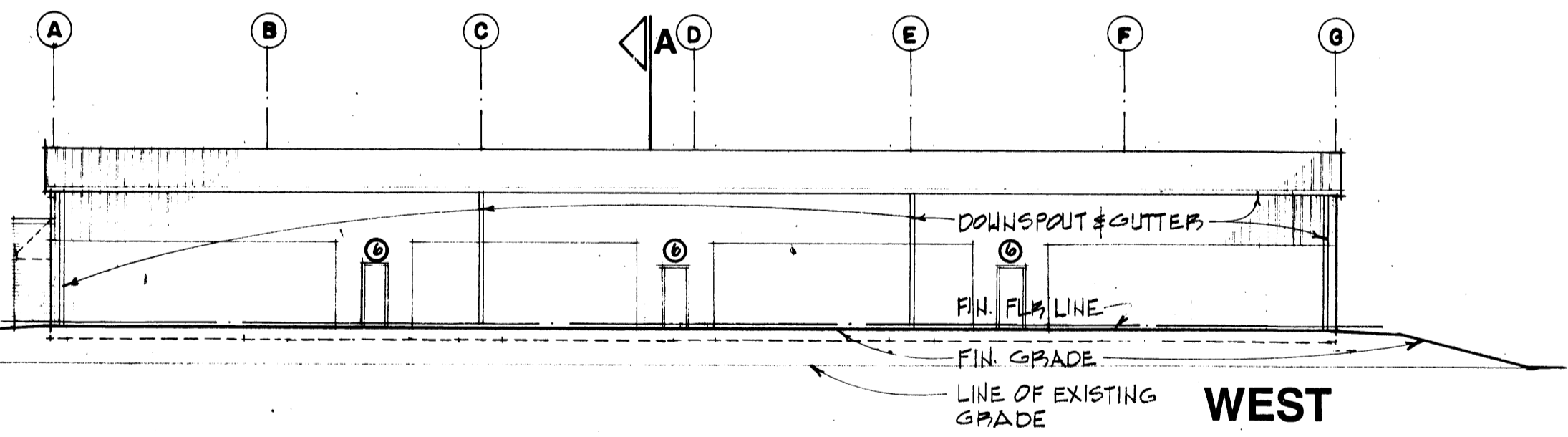


2.1

THIS IS AN ENLARGED OFFICE FLOOR PLAN

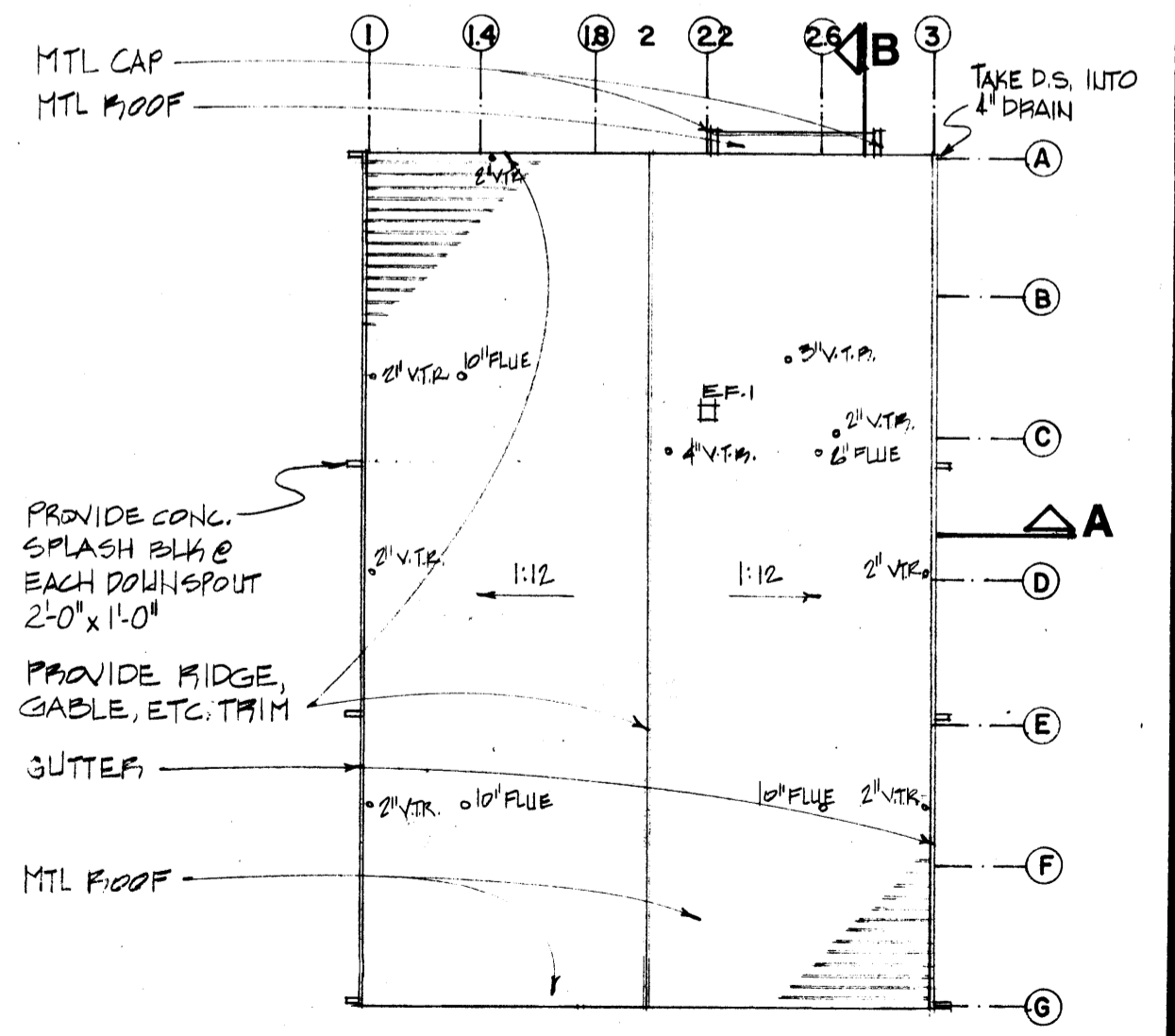


BUILDING SECTIONS 1/16"

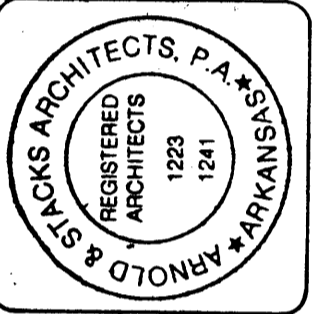


EXTERIOR ELEVATIONS 1/16"

NOTES MAY REFERENCE MORE THAN ONE ELEVATION
 Alternate Number One: Omit Dock Equipment: Omit all materials and labor required for Dock Leveler and Dock Shelter specified in this Project Manual.



**EAST ARKANSAS BUSINESS
 INCUBATOR SYSTEM FACILITY**
 ARKANSAS STATE UNIVERSITY
 JONESBORO, ARKANSAS



527 west washington
 Jonesboro, ar. 72401
 (501) 932-5550 (501) 934-4678

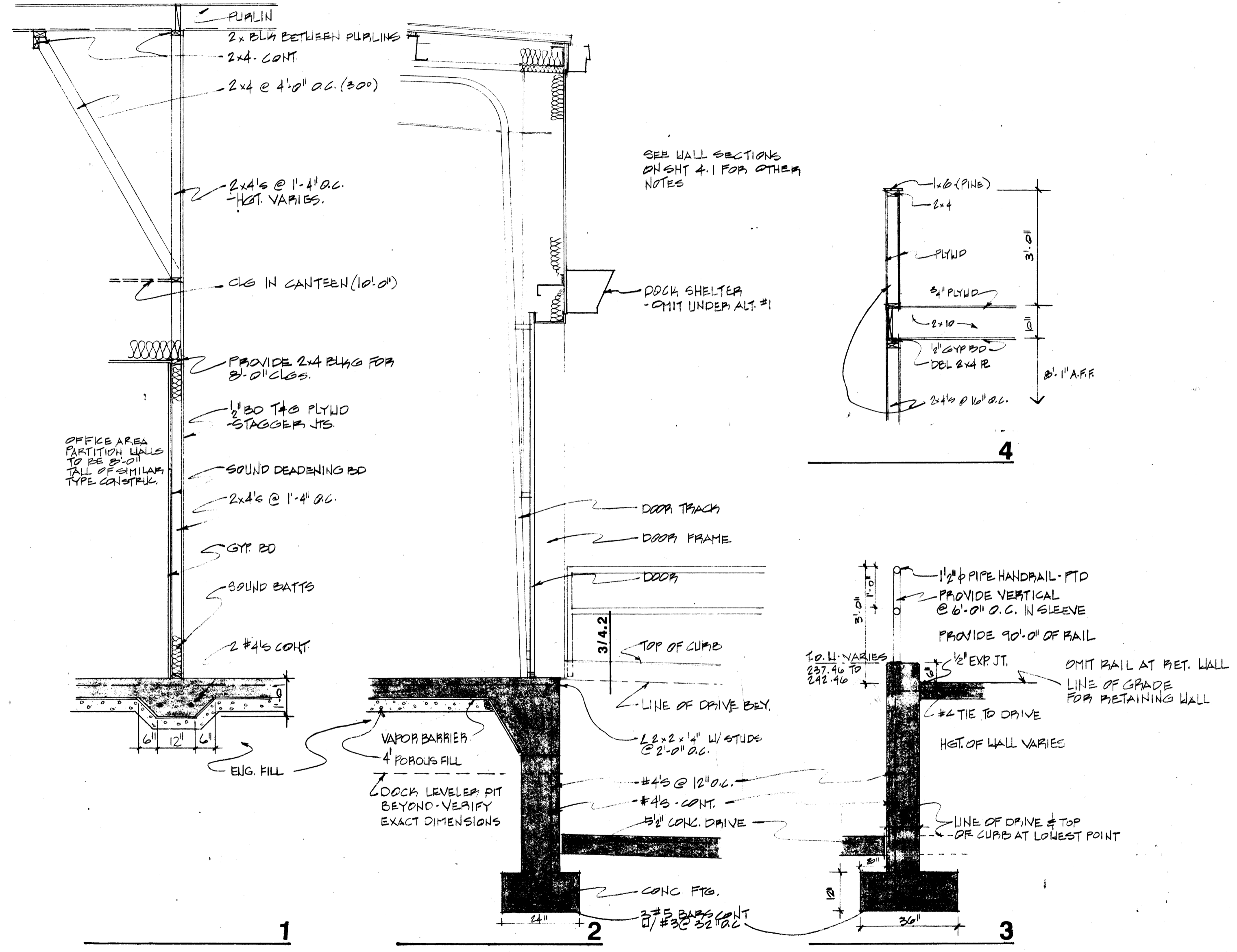
901 central
 p. o. box 1560
 hot springs, ar. 71902
 (501) 932-5550 (501) 934-4678

project no.
 86238
 7/86
 06/28/86

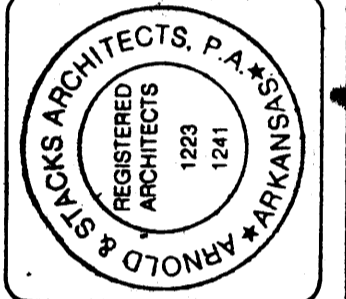
**Arnold
 + Stacks**
 architects, pa

3.1

4.2		
T-1	T-1	100



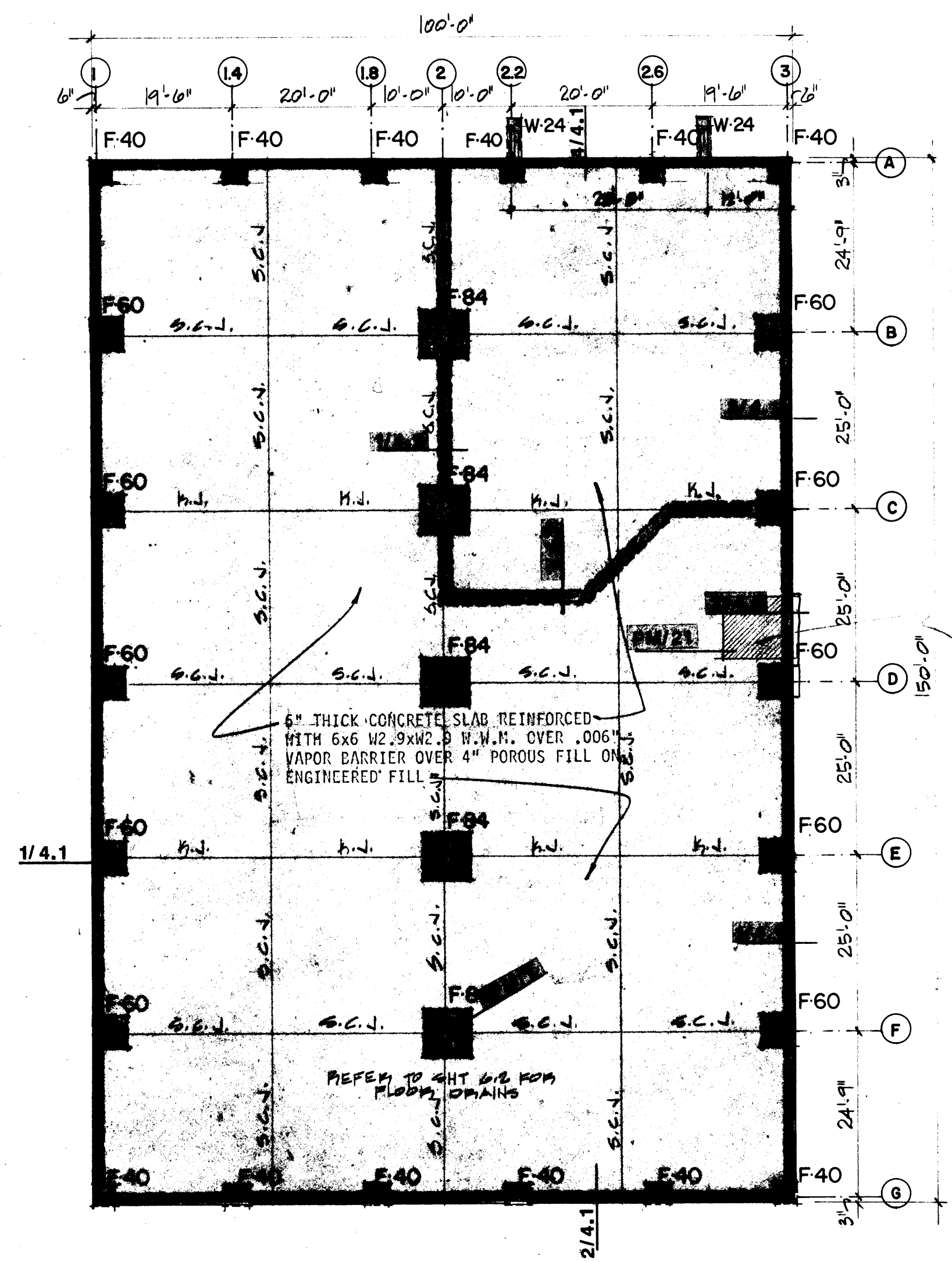
EAST ARKANSAS BUSINESS INCUBATOR SYSTEM FACILITY
 ARKANSAS STATE UNIVERSITY
 JONESBORO, ARKANSAS



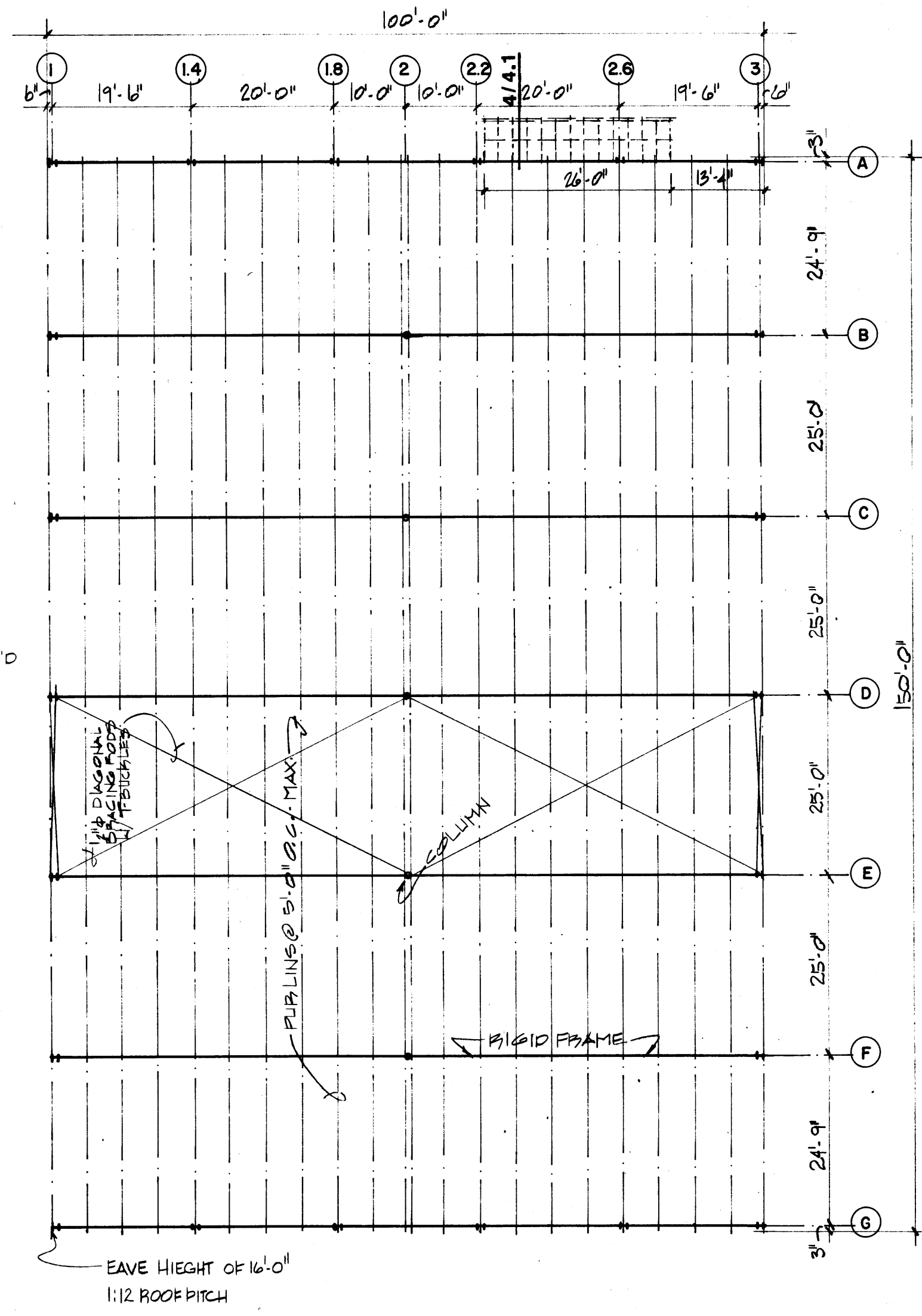
527 west washington
 Jonesboro, ar. 72401
 (501) 932-5530
 901 central
 p. o. box 1560
 hot /pine, ar. 71902
 (501) 624-4678
 project no.
 88236
 06/26/88

Arnold + Stacks
 architects, pa

5.1					
T-1	T-1	100			



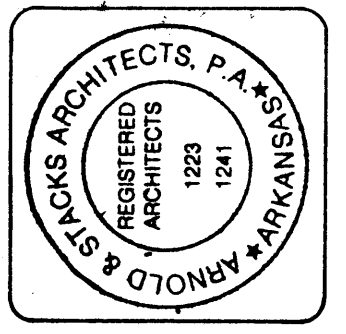
FOUNDATION PLAN 1/16"
SEE SITE PLAN FOR FOUNDATIONS REQ'D FOR RAMP WALL & RETAINING WALL.



MEZZANINE FRAMING PLAN 1/8"

ROOF FRAMING PLAN 1/16"

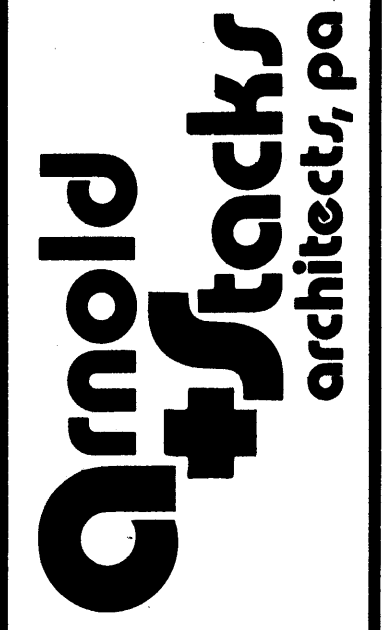
EAST ARKANSAS BUSINESS INCUBATOR SYSTEM FACILITY
ARKANSAS STATE UNIVERSITY
JONESBORO, ARKANSAS



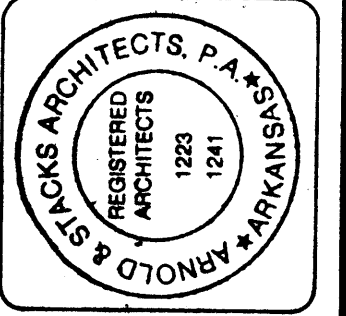
527 west washington
Jonesboro, AR 72401
(501) 932-5530
901 central
P. O. Box 69
Jonesboro, AR 72401
(501) 932-5530

REGISTERED ARCHITECTS
1223
1241
ARKANSAS

Project no.
89236
Date
06/26/86



EAST ARKANSAS BUSINESS INCUBATOR SYSTEM FACILITY
ARKANSAS STATE UNIVERSITY
JONESBORO, ARKANSAS



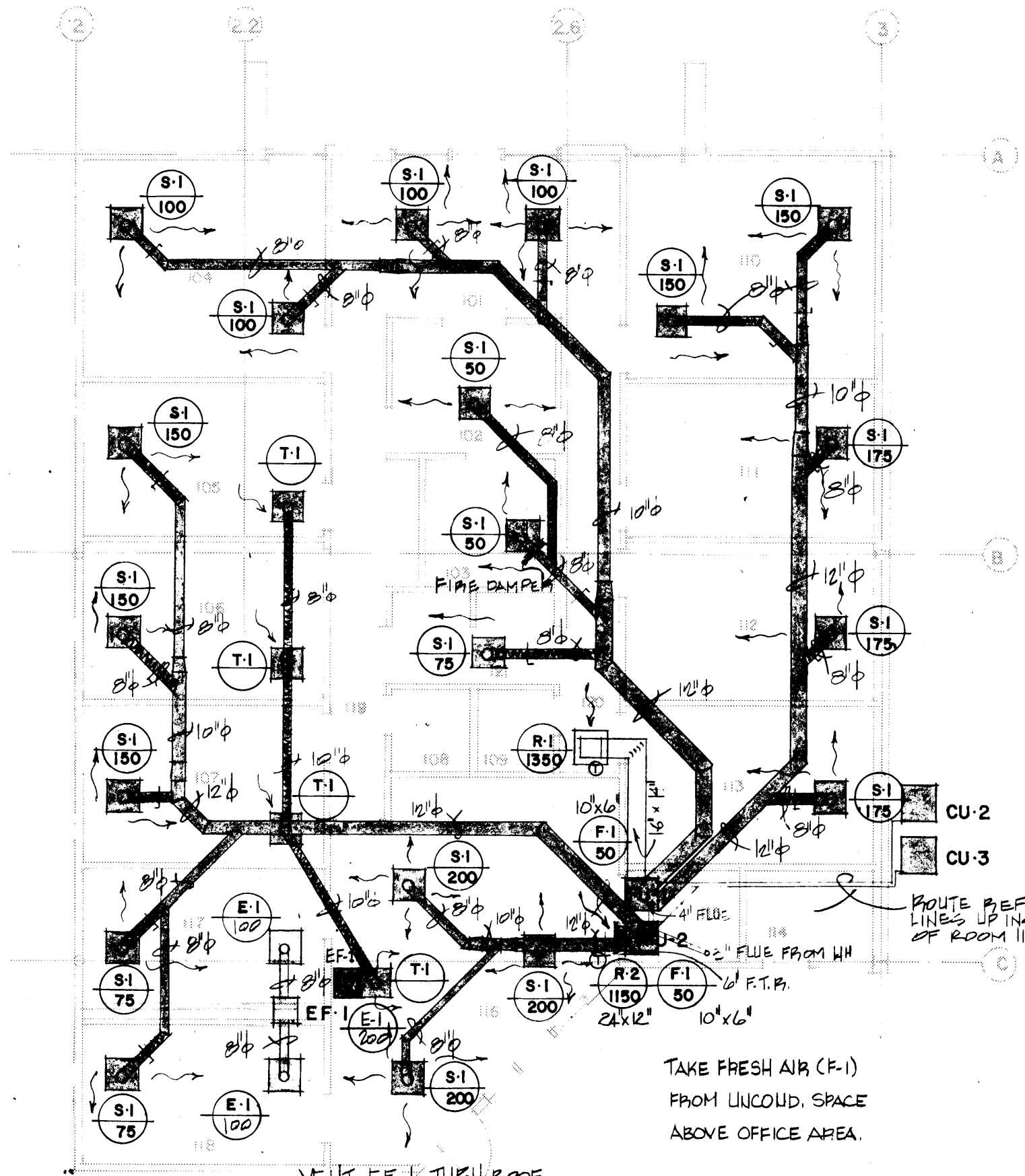
527 west washington
p. o. box 69
Jonesboro, ar. 72401
(501) 932-3520 (501) 624-4678

project no.
88236
06/28/88

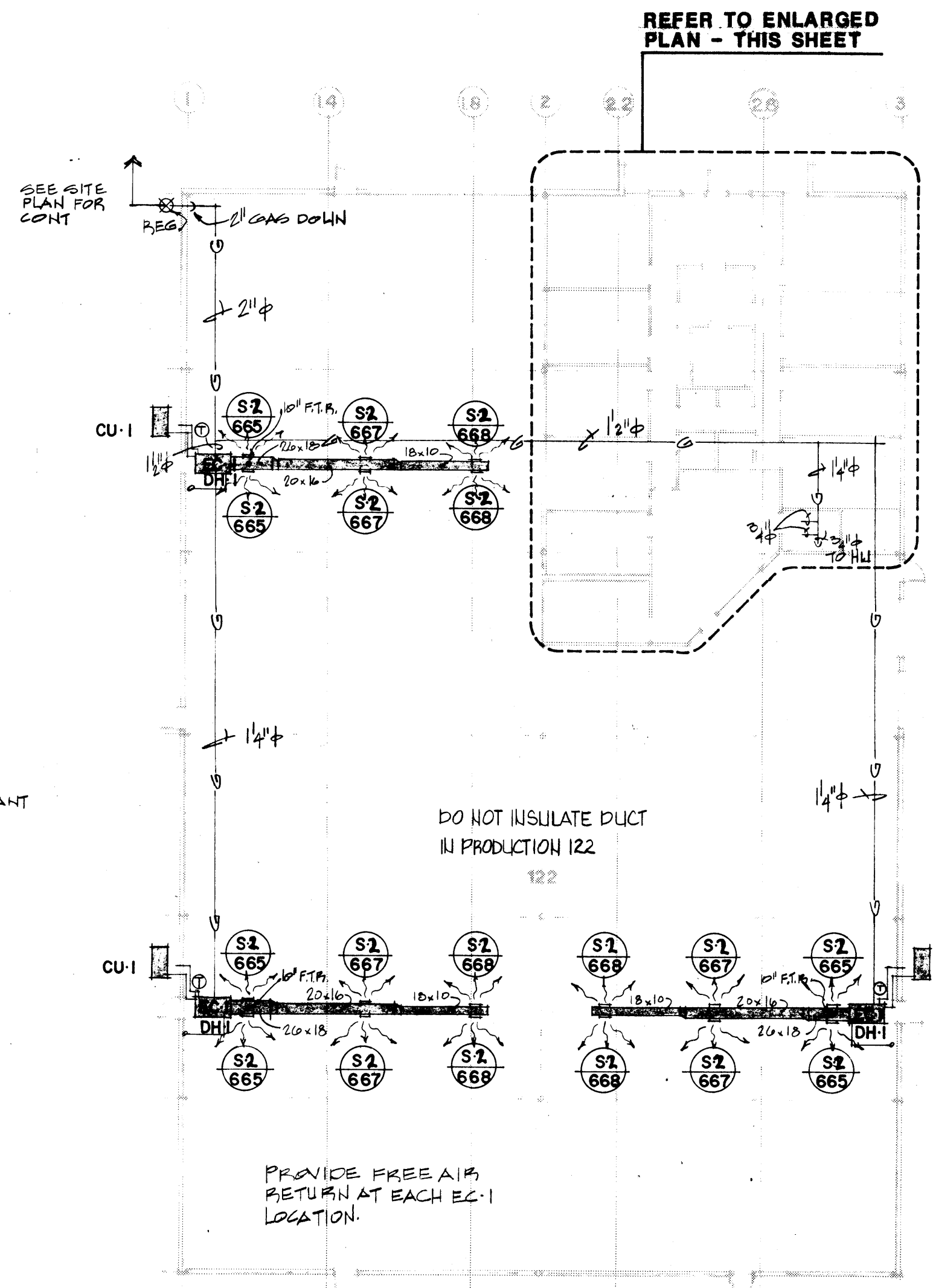


6.1

HVAC PLAN, ENLARGED OFFICE HVAC PLAN



ENLARGED OFFICE HVAC PLAN 1/8"

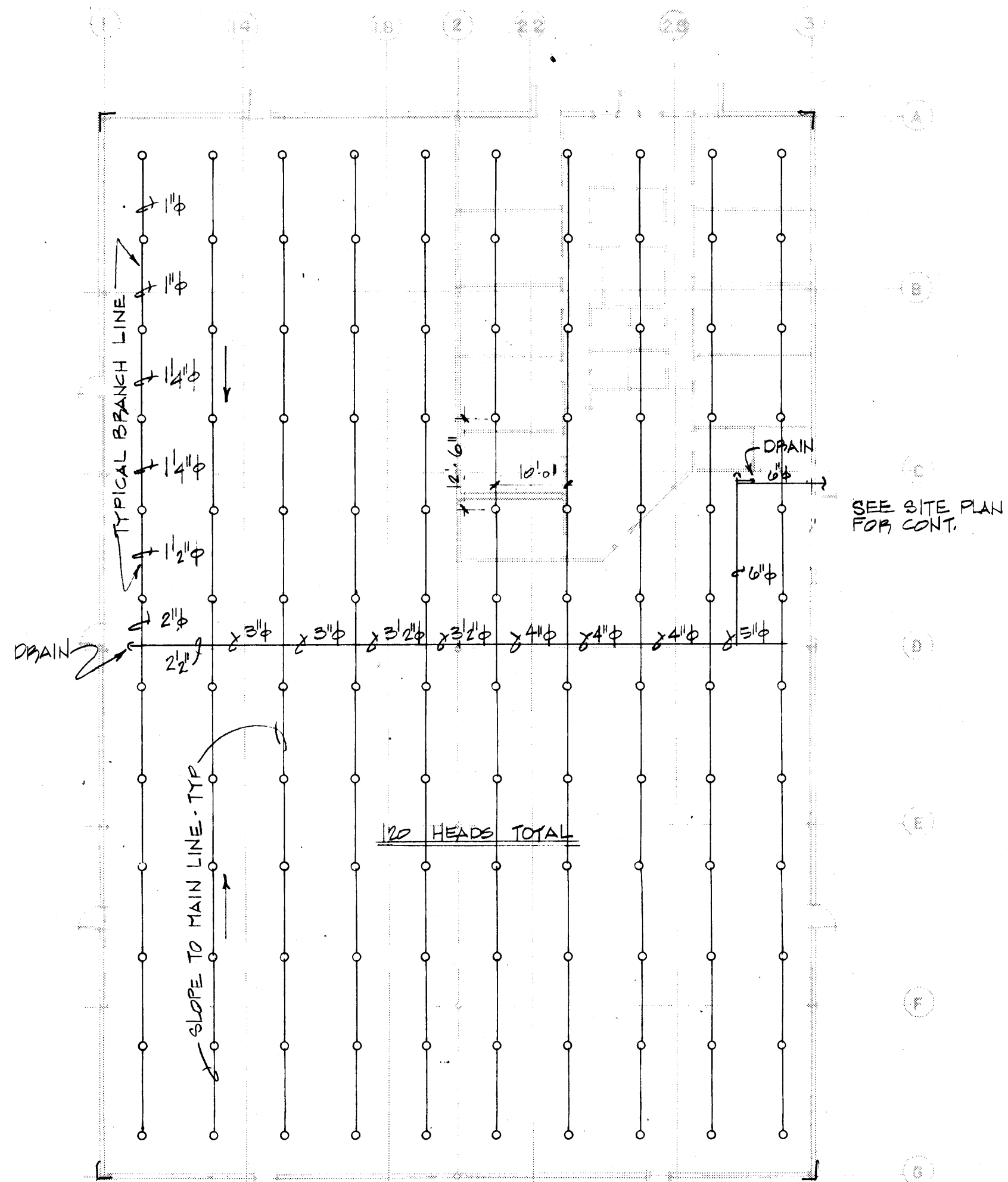


REFER TO ENLARGED PLAN - THIS SHEET

HVAC PLAN 1/16

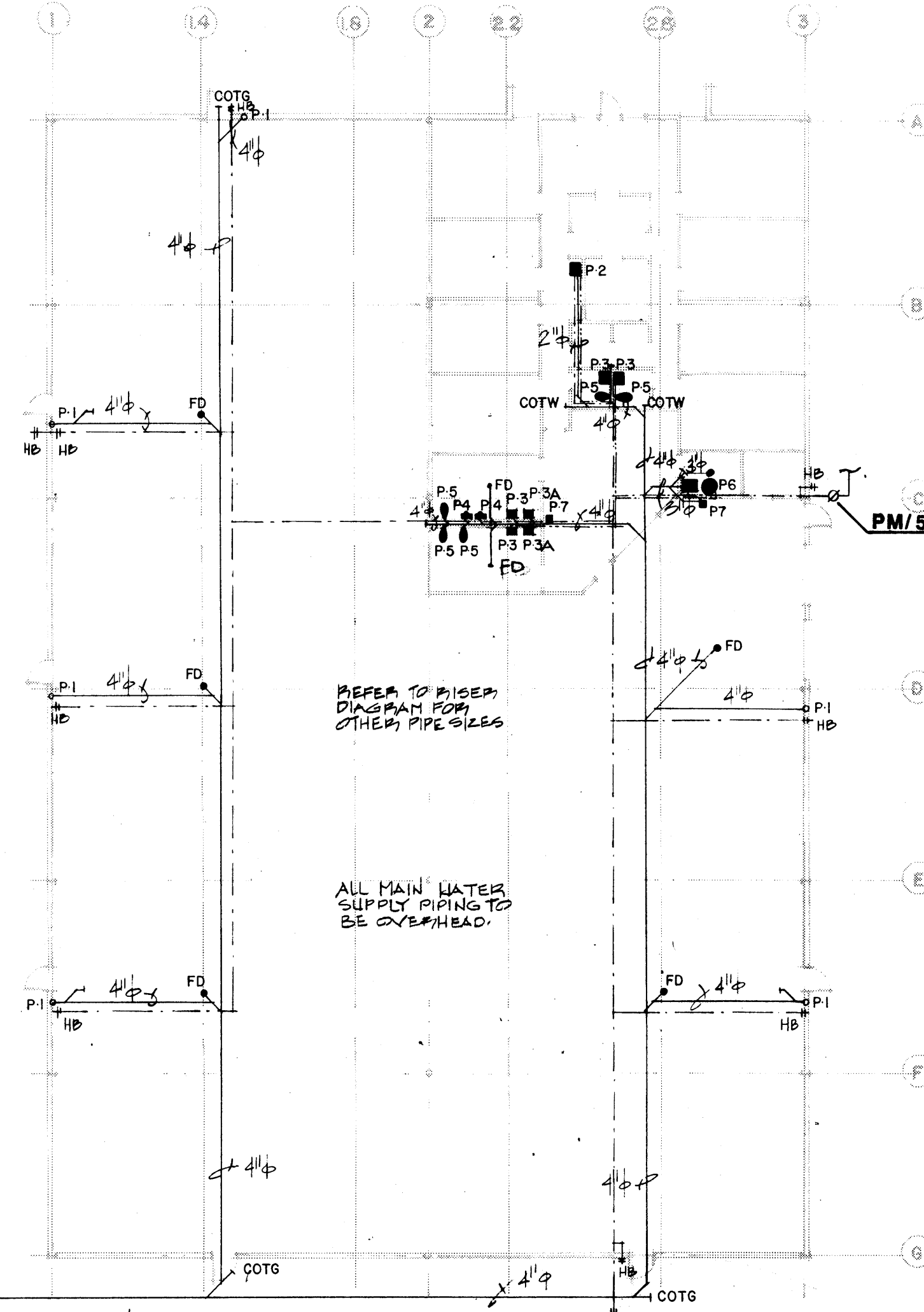
6.1				
T-1	T-1	100		
P-1	P-1	50		
P-2	P-2	50		
N-1	N-1	50		

Alternate Number Three: Omit Condensing Units: Omit three (3) 10ton Condensing Units noted as "CU-1" on the Drawings. Omit the electrical lines and connections for these units. Do not omit the breakers specified for these units. Do not omit the Concrete Pads shown or the refrigerant lines.



SUPPORT FROM STRUCTURE ABOVE AS REQUIRED
FIRE PROTECTION PLAN 1/16"

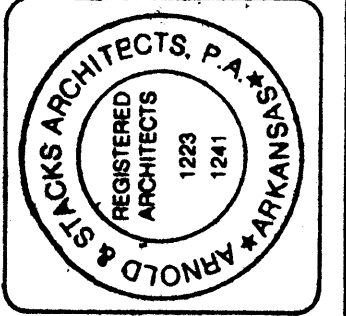
SEE SITE PLAN FOR CONT.



SEE SITE PLAN SH. 1.2.
PLUMBING PLAN 1/16"
 REFER TO SHEET 6.1 FOR GAS PIPING
 REFER TO SHEET 6.3 FOR RISER DIAGRAM

6.2		
T-1	T-1	100
P-2	P-2	50
P-3	P-3	50

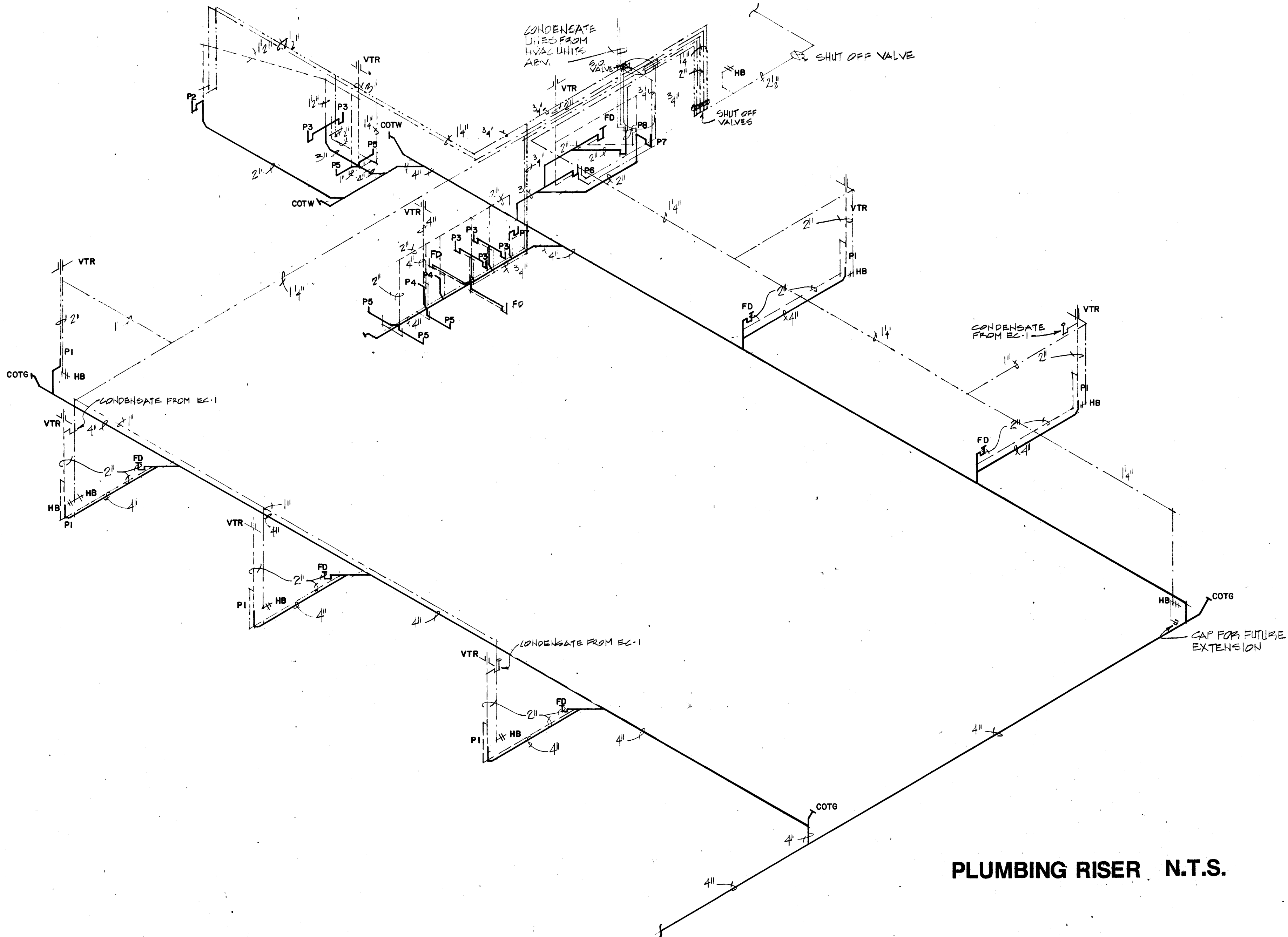
EAST ARKANSAS BUSINESS INCUBATOR SYSTEM FACILITY
 ARKANSAS STATE UNIVERSITY
 JONESBORO, ARKANSAS



587 West Washington Jonesboro, Ar. 72401
 P.O. Box 69 Jonesboro, Ar. 72401
 P.O. Box 1560 Hot Springs, Ar. 71902
 (501) 922-5350 (501) 624-4678
 Project No. 84236
 Date 06/21/88

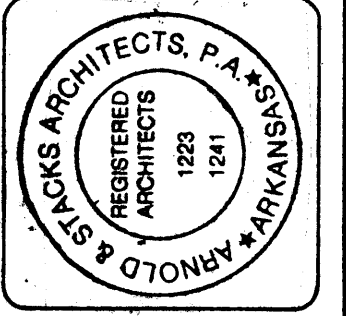
Arnold & Stacks architects, pa

6.2



PLUMBING RISER N.T.S.

EAST ARKANSAS BUSINESS INCUBATOR SYSTEM FACILITY
 ARKANSAS STATE UNIVERSITY
 JONESBORO, ARKANSAS



527 west warhington
 Jonesboro, ar. 72401
 (501) 922-5550

901 central
 p. o. box 1560
 Jonesboro, ar. 72401
 (501) 624-4676

project no.
 88238
 06/25/88

Arnold
Stacks
 architects, pa

6.3		
T-1	T-1	100

6.3

PLUMBING RISER

