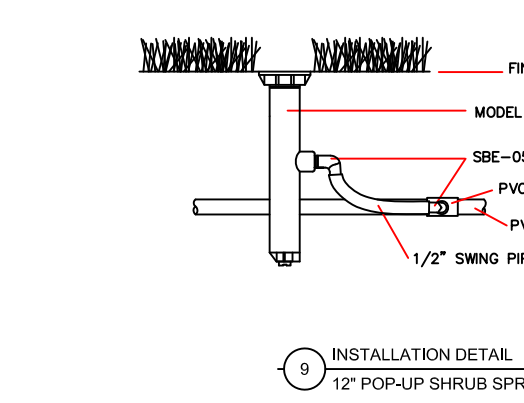
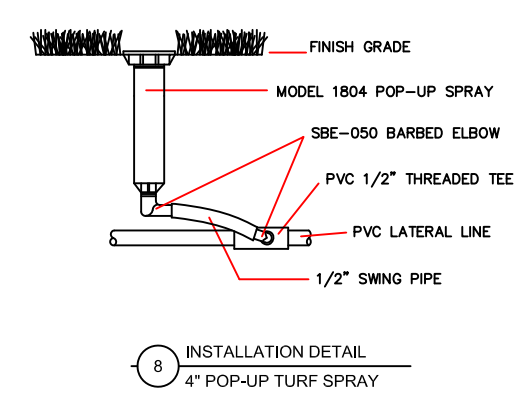
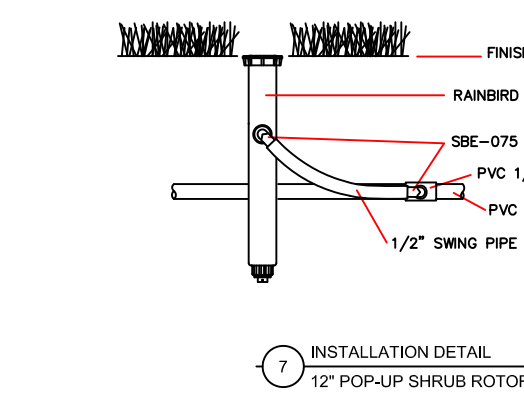
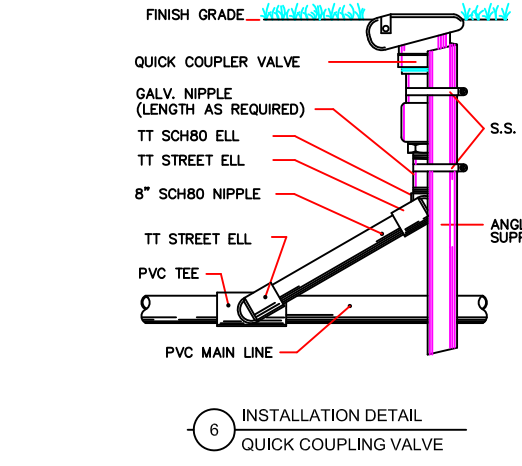
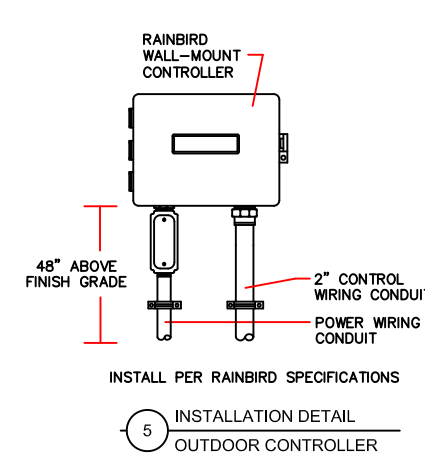


- ZONE #1 = 43gpm
- ZONE #2 = 33gpm
- ZONE #3 = 25gpm
- ZONE #4 = 30gpm
- ZONE #5 = 26gpm
- ZONE #6 = 42gpm
- ZONE #7 = 25gpm
- ZONE #8 = 44gpm
- ZONE #9 = 45gpm
- ZONE #10 = 32gpm
- ZONE #11 = 39gpm
- ZONE #12 = 42gpm
- ZONE #13 = 26gpm
- ZONE #14 = 29gpm
- ZONE #15 = 41gpm
- ZONE #16 = 39gpm
- ZONE #17 = 40gpm
- ZONE #18 = 42gpm



- IRRIGATION LEGEND**
- 1 2" WATER METER W/45gpm @75psi REQUIRED.
  - 1 WILKINS #975 2" BACKFLOW PREVENTER ASSY.
  - 1 RAINBIRD F5200P FLOW SENSOR W/PT322 PULSE TRANSMITTER AND M5100 PULSE DECODER.
  - 1 RAINBIRD 100EP ZONE VALVE W/FLO CONTROL
  - 1 RAINBIRD 150EP ZONE VALVE W/FLO CONTROL
  - 1 RAINBIRD ESP-40-SAT-TW-MM SATELLITE CONTROLLER
  - 1 RAINBIRD 3RC QUICK COUPLING VALVE (PROVIDE 3 KEYS)

- 3 RAINBIRD 1804 W/150 POP-UP TURF SPRAY
- 15 RAINBIRD 1804 W/15H POP-UP TURF SPRAY
- 8 RAINBIRD 1804 W/10F-LA POP-UP TURF SPRAY

- 59 RAINBIRD 1812 W/8-VAN POP-UP SHRUB SPRAY
- 28 RAINBIRD 1812 W/10Q-LA POP-UP SHRUB SPRAY
- 85 RAINBIRD 1812 W/10H-LA POP-UP SHRUB SPRAY
- 11 RAINBIRD 1812 W/10F-LA POP-UP SHRUB SPRAY
- 1 RAINBIRD 1812 W/10-VAN POP-UP SHRUB SPRAY
- 4 RAINBIRD 1812 W/12Q POP-UP SHRUB SPRAY
- 4 RAINBIRD 1812 W/12H POP-UP SHRUB SPRAY
- 8 RAINBIRD 1812 W/15-VAN POP-UP SHRUB SPRAY
- 63 RAINBIRD 1812 W/15Q POP-UP SHRUB SPRAY
- 10 RAINBIRD 1812 W/15H POP-UP SHRUB SPRAY
- 85 RAINBIRD 1812 W/15H POP-UP SHRUB SPRAY
- 3 RAINBIRD 1812 W/15TQ POP-UP SHRUB SPRAY
- 16 RAINBIRD 1812 W/15F POP-UP SHRUB SPRAY
- 4 RAINBIRD 1812 W/15EST POP-UP SHRUB SPRAY
- 9 RAINBIRD 1812 W/15SST POP-UP SHRUB SPRAY
- 4 RAINBIRD 1812 W/1402 POP-UP TRICKLE BUBBLER

- 60 RAINBIRD T-12-PC-T22-1.3 POP-UP TBIRD ROTOR
- 6 RAINBIRD T-12-PC-T22-2.5 POP-UP TBIRD ROTOR
- 9 RAINBIRD T-12-PC-T30-1.3 POP-UP TBIRD ROTOR
- 14 RAINBIRD T-12-PC-T30-2.5 POP-UP TBIRD ROTOR

**SLEEVING NOTES**

ALL SLEEVING SHALL BE INSTALLED BY THE IRRIGATION CONTRACTOR.

ALL SLEEVING PROVIDED FOR THE IRRIGATION SYSTEM TO BE SCH40 PVC.

ALL SLEEVING TO BE BURIED A MIN. OF 18" AND A MAX. OF 24" BELOW THE FINISHED GRADE. ENDS OF SLEEVES SHALL EXTEND 12" PAST THE EDGES OF ALL PAVING AND CURBS AND BE CLEARLY MARKED FOR FUTURE USE BY THE SPRINKLER SYSTEM CONTRACTOR.

SLEEVING SIZES AS FOLLOWS:

- 4" SCH40 PVC SLEEVING
- 6" SCH40 PVC SLEEVING

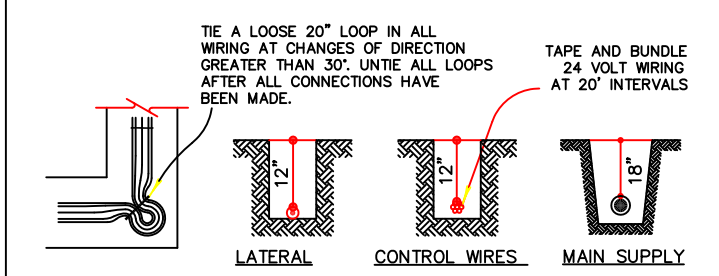
**GENERAL NOTES**

CONTRACTOR SHALL BE RESPONSIBLE FOR DAMAGES CAUSED TO ALL UTILITIES (BOTH OVERHEAD AND BELOWGROUND) DURING THE IRRIGATION INSTALLATION. CONTRACTOR SHALL SEEK THE ASSISTANCE AT LOCAL UTILITIES AND THE OWNER IN THE LOCATION OF THE UTILITIES PRIOR TO PERFORMING TRENCHING OPERATIONS IN THE WORKING AREA.

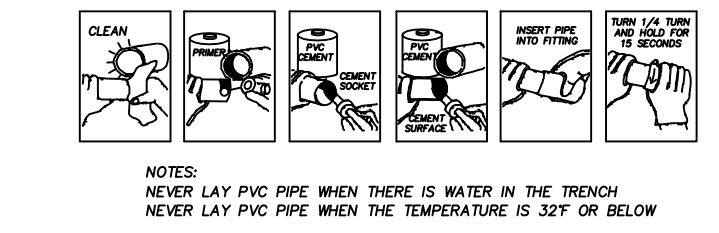
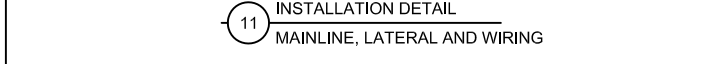
THE IRRIGATION DESIGN IS DIAGRAMMATIC. THE INTENT OF THE DRAWINGS IS TO SHOW THE GENERAL LAYOUT AND LOGIC OF THE SYSTEM. SCALED MEASUREMENTS MAY NOT BE ACCURATE. ACTUAL LOCATIONS AND QUANTITIES OF PIPE AND FITTINGS MAY VARY DUE TO FIELD ADJUSTMENTS FOR EXISTING CONDITIONS AND OTHER OBSTRUCTIONS TO PROVIDE THE PROPER AND INTENDED COVERAGE.

WINTERIZING SHALL BE BY "AIR BLOW OUT" METHOD.

ALL PVC MAINLINE AND LATERAL PIPING SHALL BE PVC CL200. ALL PVC FITTINGS SHALL BE SCH. 40 PVC TYPE 1 AND MUST BE OF DOMESTIC MANUFACTURE.



NOTES: BACKFILL MATERIAL SHALL BE FREE FROM ROCKS OR HEAVY INSTURABLE SUBSTANCES WHICH COULD DAMAGE THE PIPE OR CAUSE UNUSUAL SETTLING PROBLEMS. BACKFILLING SHALL BE DONE IN 6 INCH LAYERS AND TAMPED DOWN AFTER EACH LAYER IS PUT BACK TO PREVENT EXCESSIVE SETTLING.



**MDL CONSULTING**

MITCHELL D. LANGLEY  
P.O. BOX 565  
300 MONROE STREET  
JUDSONIA, AR 72081  
PH: 501 / 728-4277  
FX: 501 / 728-4277  
EM: mdl@mdlconsulting.com

AMERICAN SOCIETY OF IRRIGATION CONSULTANTS

PROFESSIONAL MEMBER

ARKANSAS STATE UNIVERSITY  
Academic Boulevard Site Improvements  
Jonesboro, Arkansas

AUTOMATIC IRRIGATION SYSTEM

DATE: 19 JUL 99  
DATE: 09 JUL 99  
SCALE: 3/8" = 1'-0"  
SHEET:  
**IR-1**  
OF 1  
DRAWN BY: MDL  
CHECKED BY: