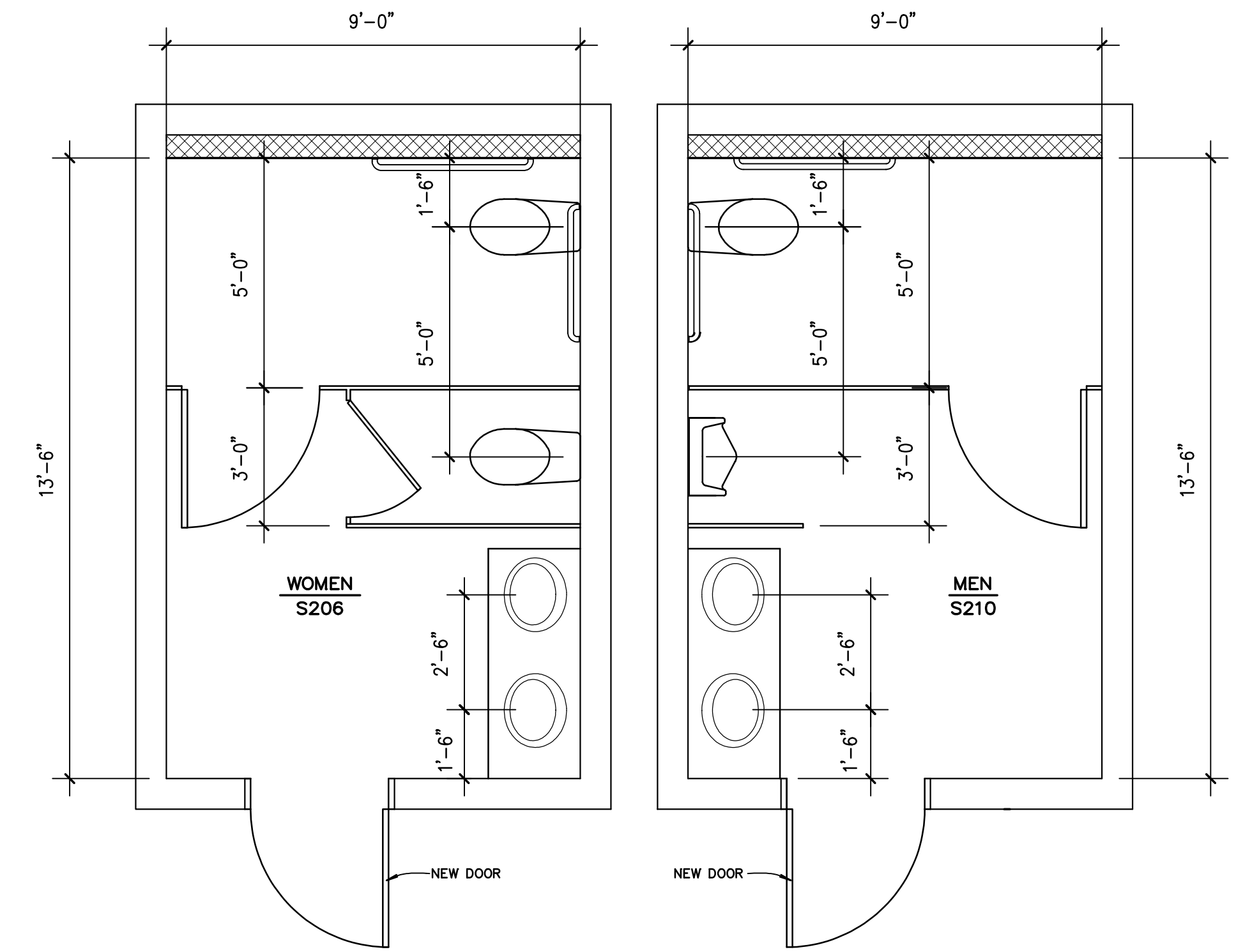
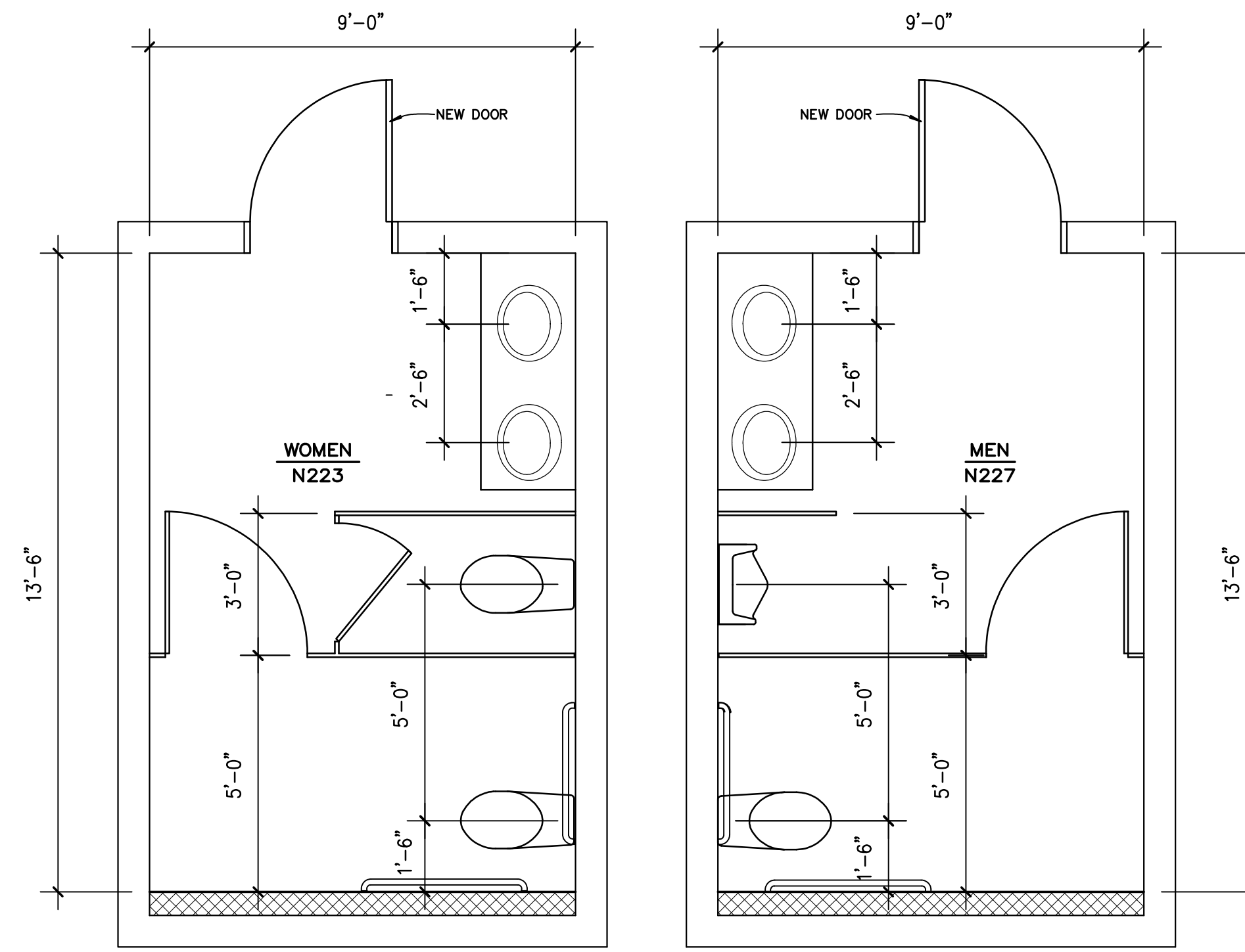
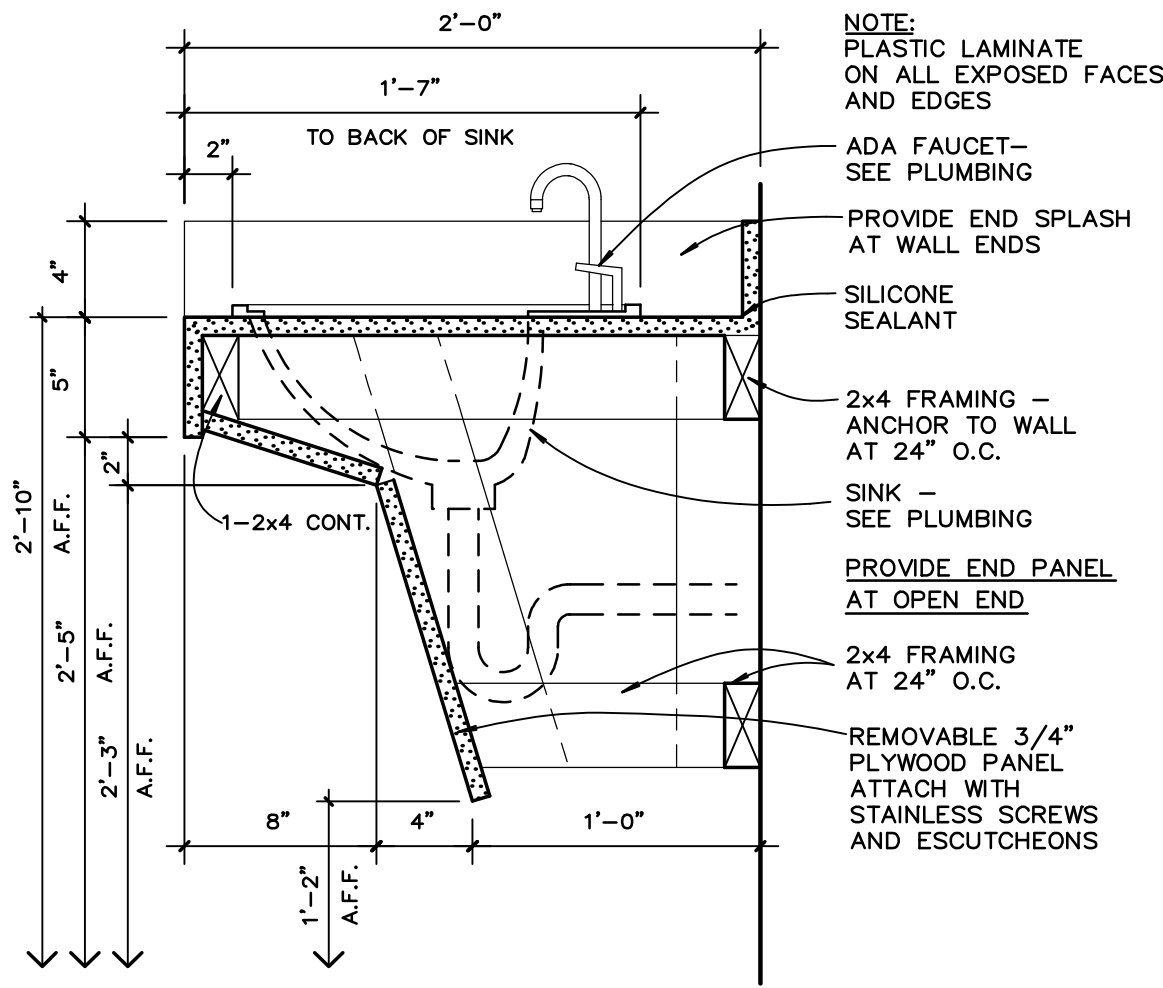
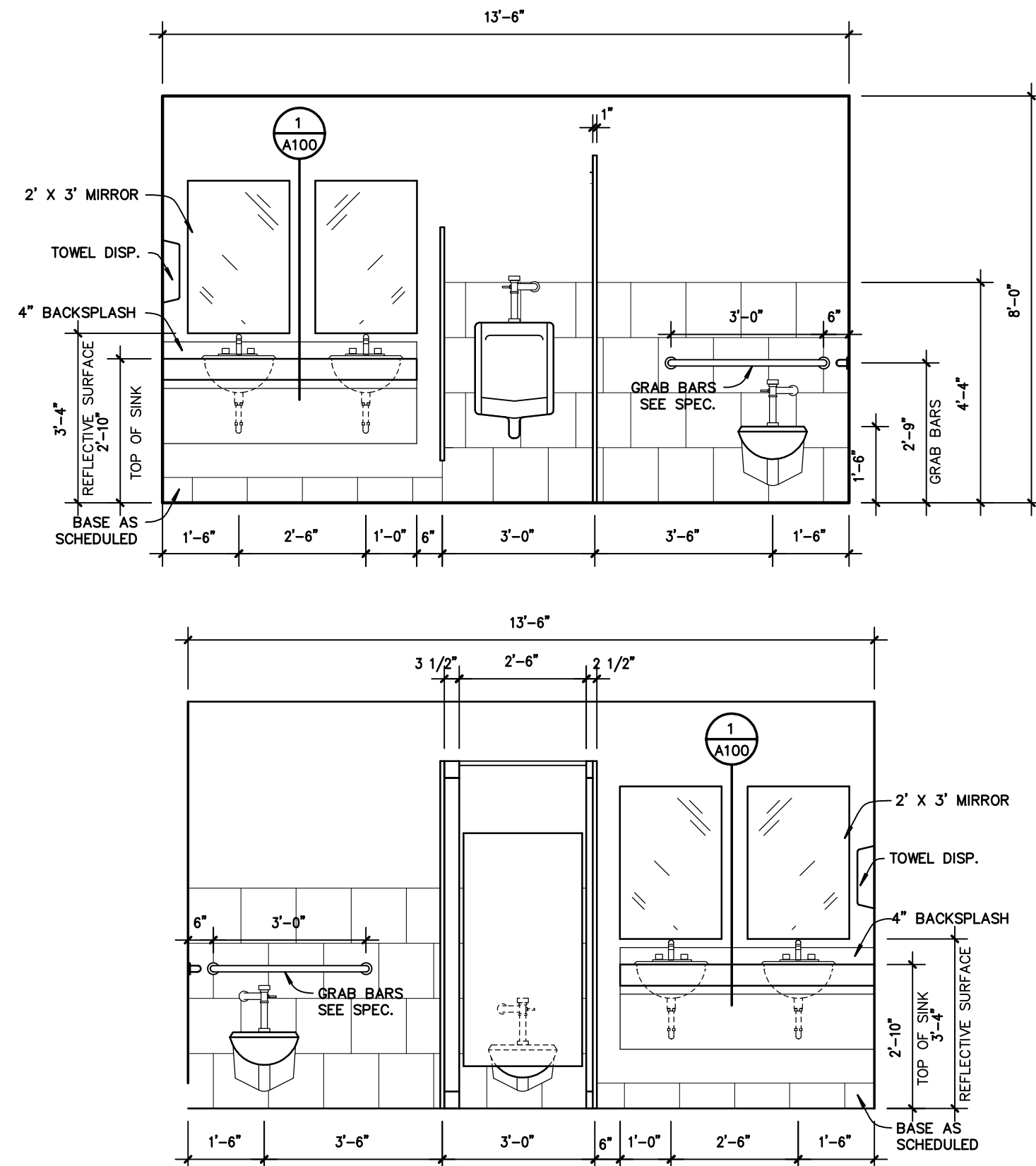


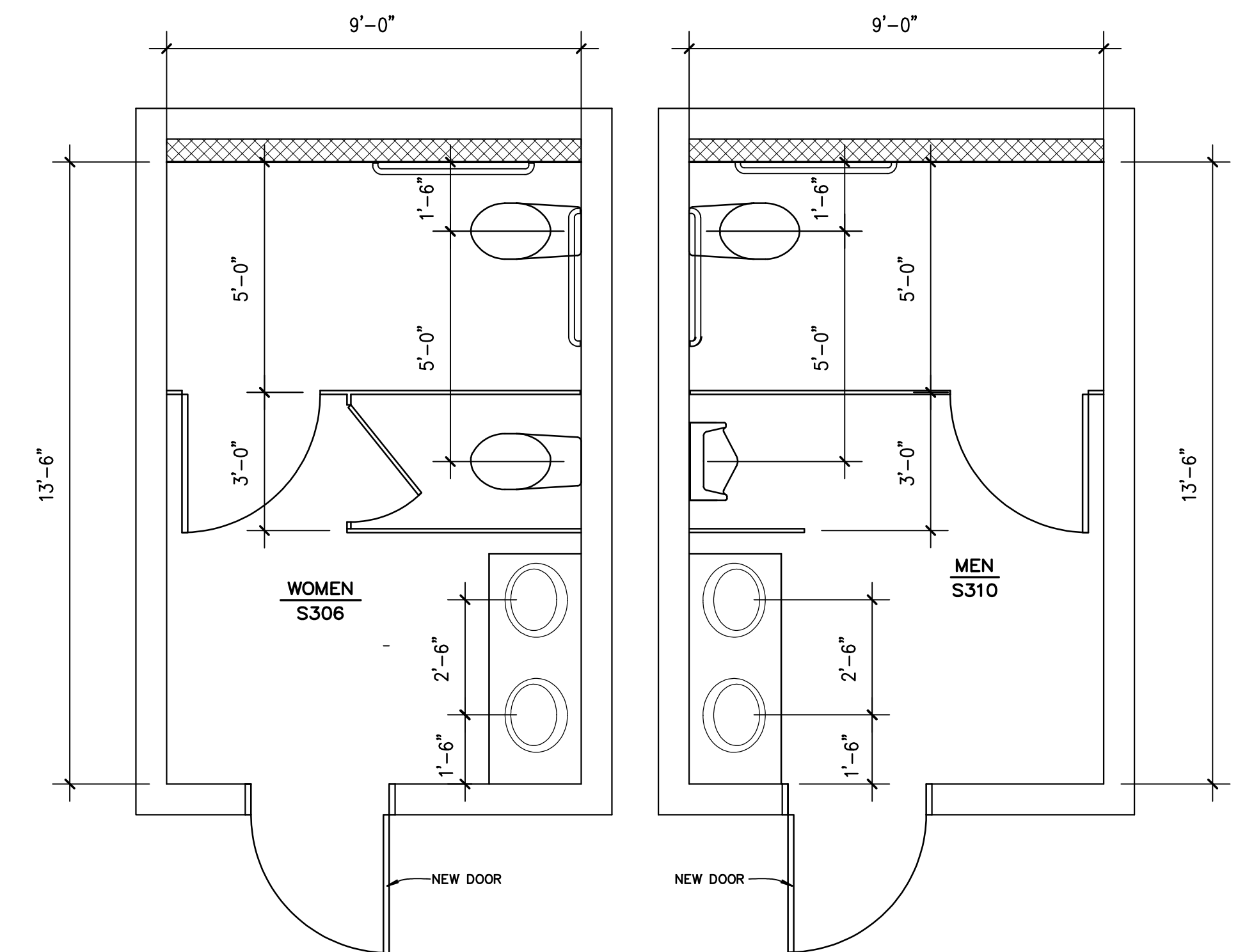
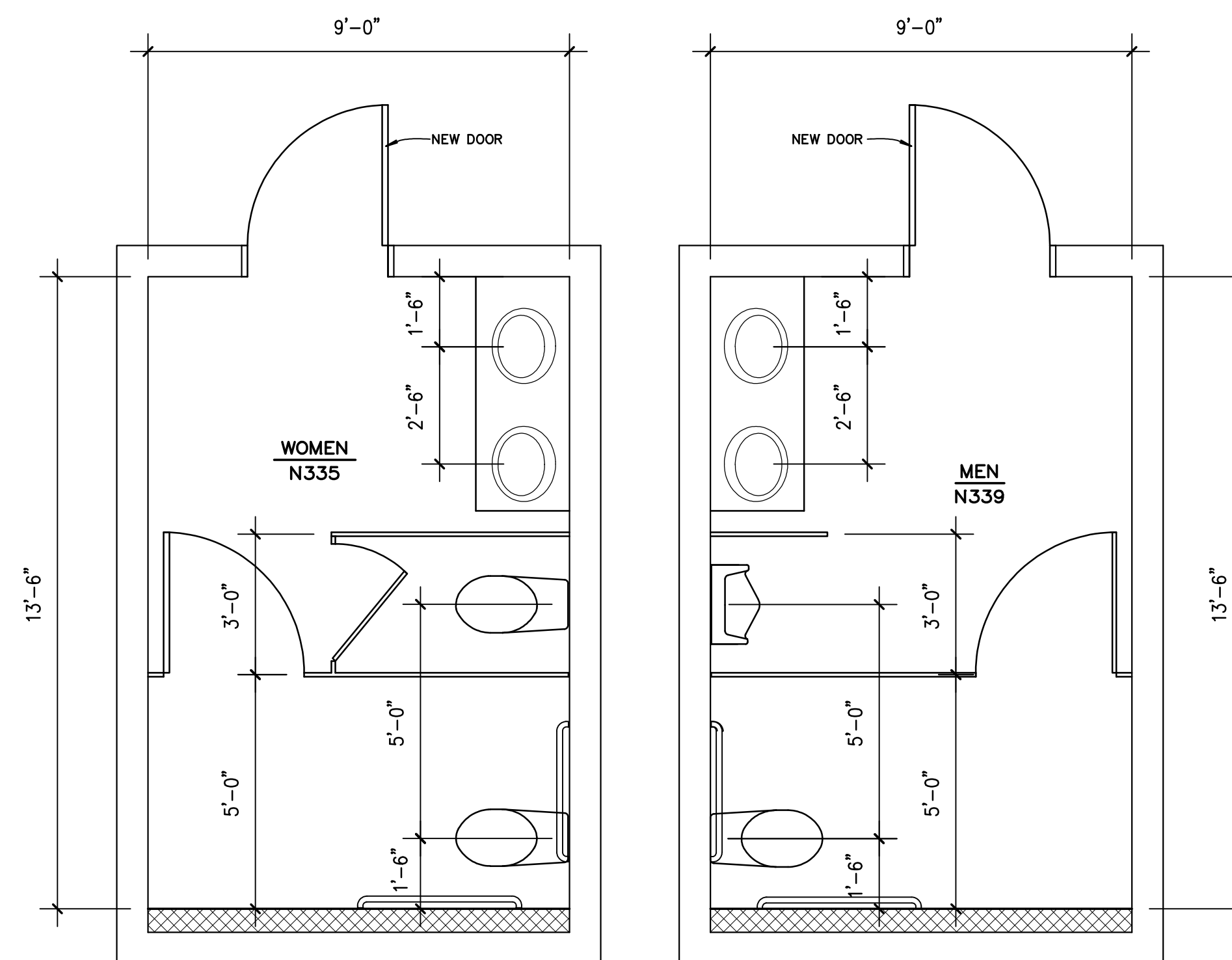
FINISH SCHEDULE						
ROOM NO.	ROOM NAME	FLOOR	BASE	WALLS	CEILING HEIGHT	CEILING
100	WOMEN	13 X 13 PORCELAIN TILE	6" PORCELAIN	PAINTED CMU/ 13 X 13 PORCELAIN TILE	8'-0" (1)	2 X 2 SUSP. ACOUSTICAL TILE
101	MEN	13 X 13 PORCELAIN TILE	6" PORCELAIN	PAINTED CMU/ 13 X 13 PORCELAIN TILE	8'-0" (1)	2 X 2 SUSP. ACOUSTICAL TILE
REMARKS						
(1) PORCELAIN TILE WAINSCOT TO RUN 4" - 4" A.F.F. ON ALL FOUR WALLS WITH THE EXCEPTION OF BEHIND THE SINKS. BEHIND SINKS, ONLY RUN PORCELAIN BASE						



**toilet mens and womens**  
SECOND FLOOR SOUTH WING  
**floor plan**  
SCALE: 3/8" = 1'-0"



**toilet elevations**  
SCALE: 3/8" = 1'-0"



**toilet mens and womens**  
THIRD FLOOR SOUTH WING  
**floor plan**  
SCALE: 3/8" = 1'-0"