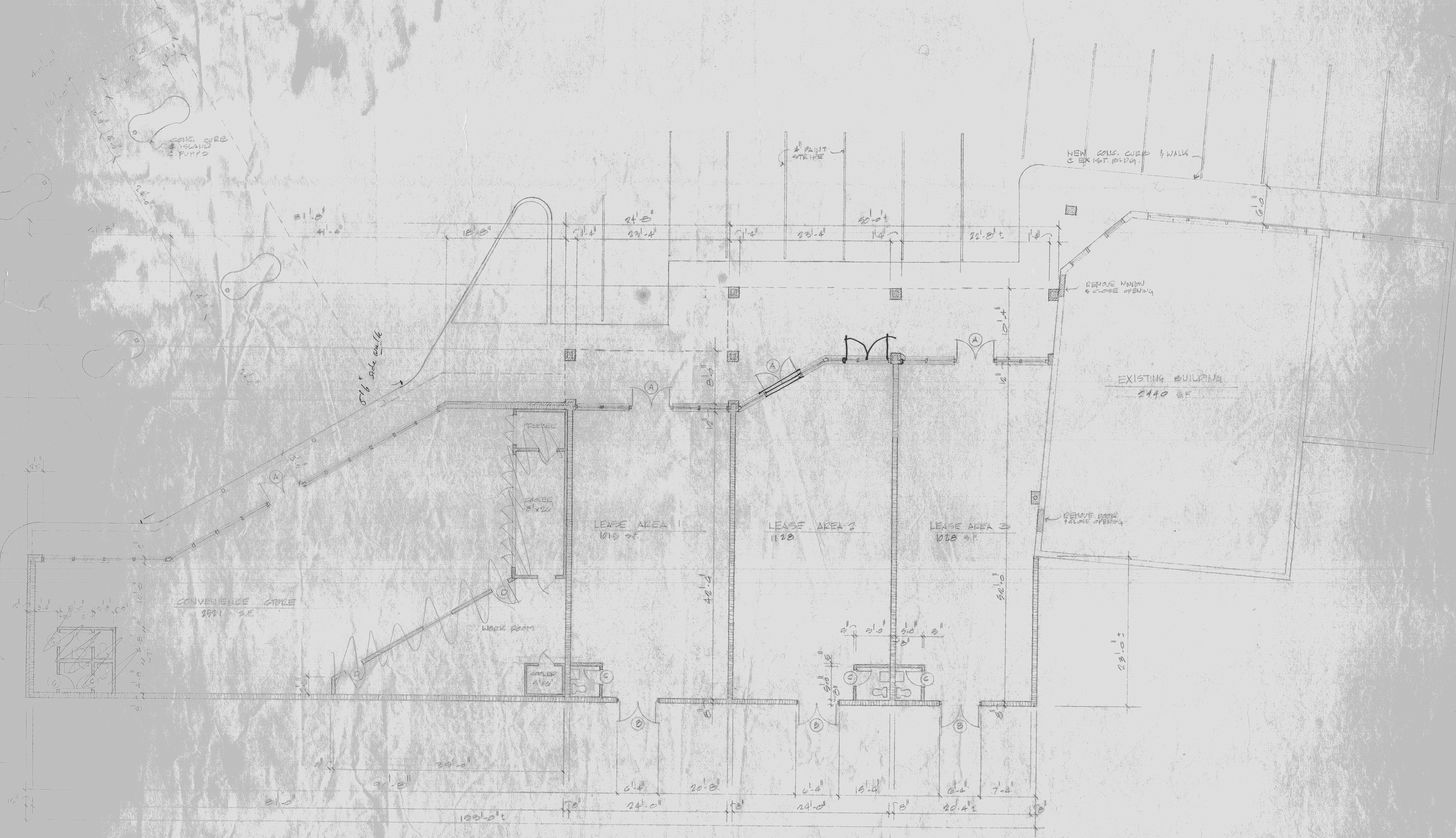


REVISIONS	BY

JAMES F. DARNELL, ARCHITECT
 P. O. BOX 6046 JONESBORO, ARKANSAS 72403 501-935-1241

BENTON CENTER
 Johnson & Caraway Road
 JONESBORO, ARKANSAS



FLOOR PLAN

Date: 1-15-86
 Scale: 1/8" = 1'-0"
 Drawn: EFL
 Approved:
 Job:
 Sheet:
A-2
 Of 2 Sheets



FLOOR PLAN

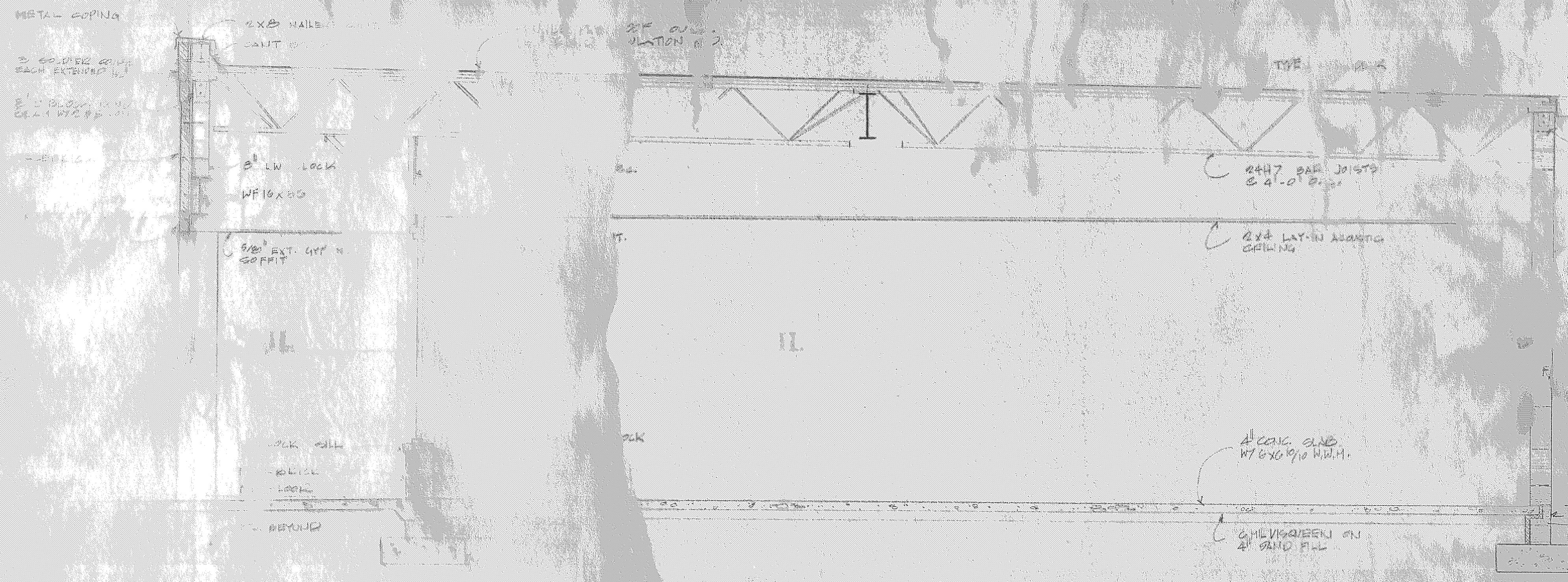
1/8" = 1'-0"

REVISIONS	BY

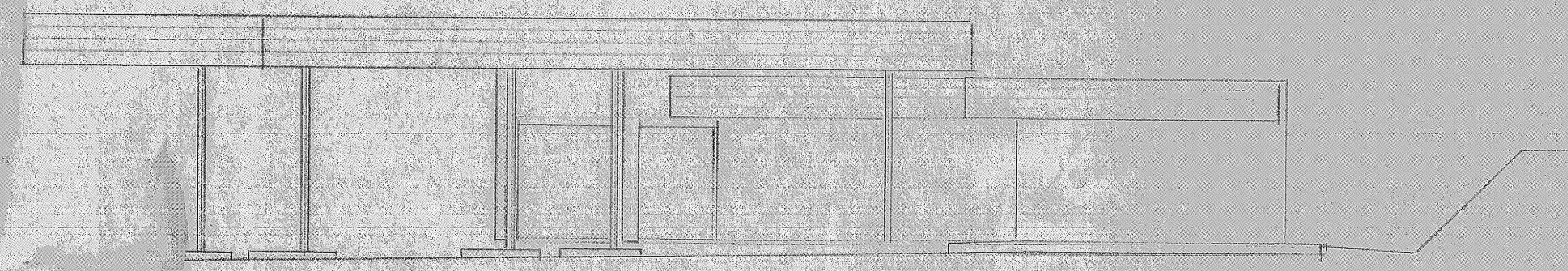
JAMES F. DARNELL, ARCHITECT
 P. O. BOX 6046 JONESBORO, ARKANSAS 72403 501-935-1241

BENTON CENTER
 Johnson & Caraway Road
 JONESBORO, ARKANSAS

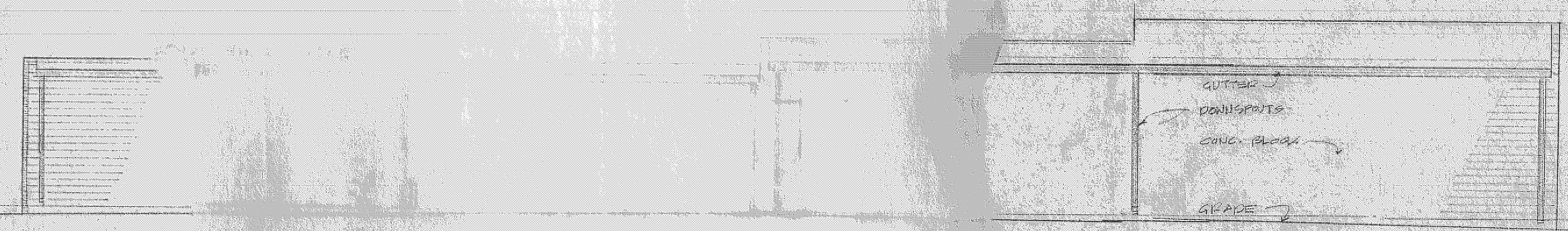
Date: 1-15-86
 Scale: 1/8" = 1'-0"
 Drawn: BFL
 Approved:
 Job:
 Sheet: **A-2**
 Of _____ Sheets



CROSS SECTION



WEST ELEVATION



SOUTH ELEVATION



NORTH ELEVATION

REVISIONS	BY

JAMES F. DARNELL, ARCHITECT
 P. O. BOX 6046 JONESBORO, ARKANSAS 72403 501-935-1241

BENTON CENTER
 Johnson & Caraway Road
 JONESBORO, ARKANSAS

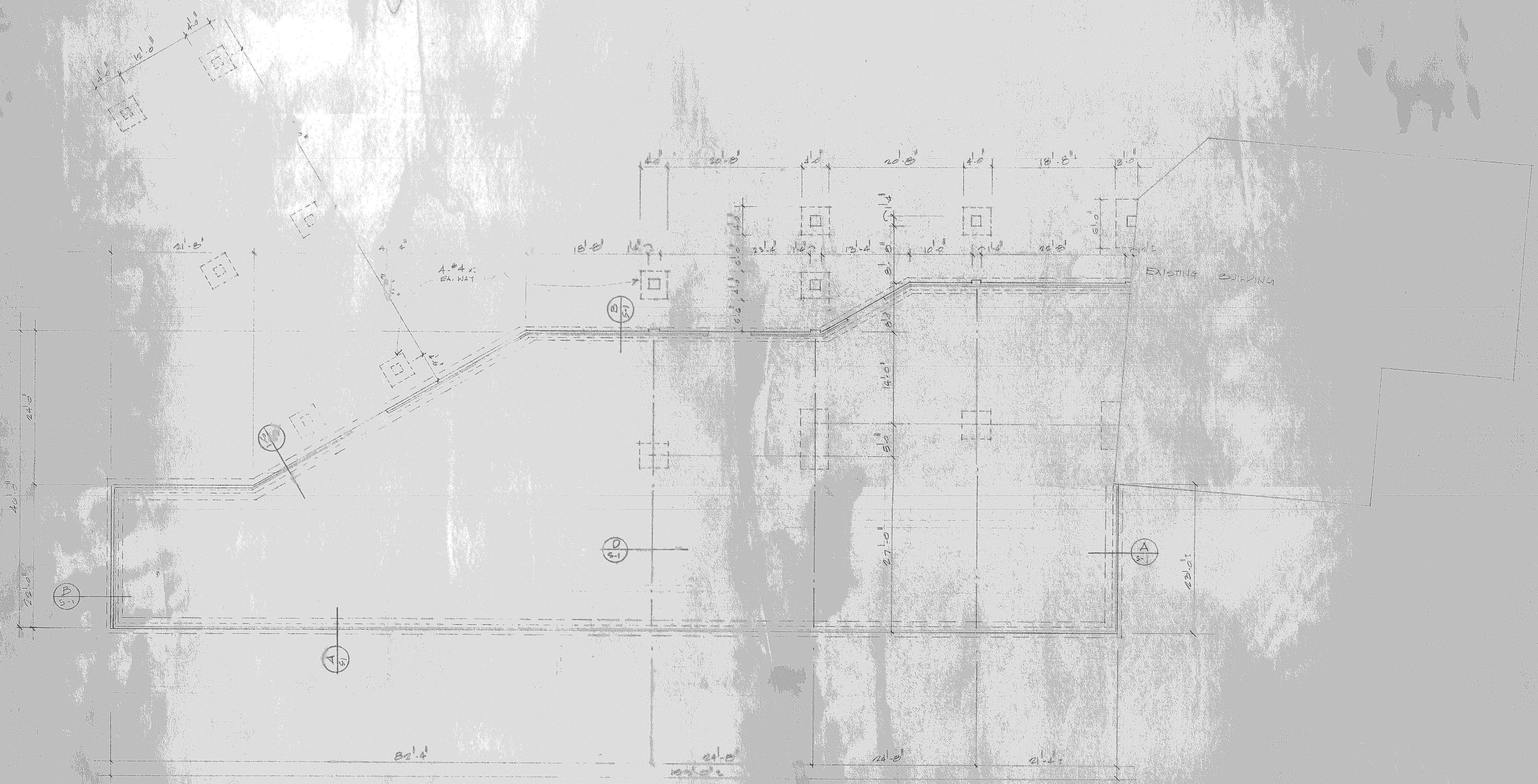
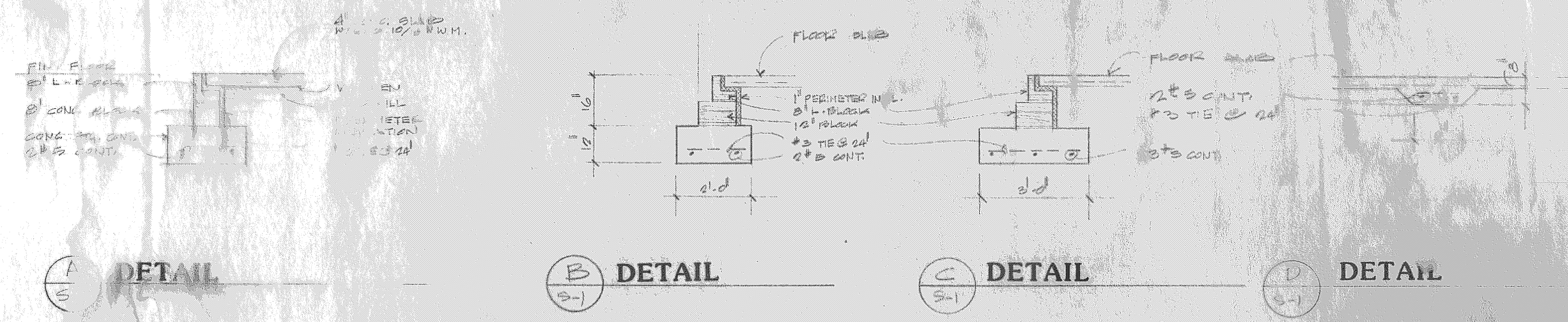
Date: 10-86
 Scale: NOTED
 Drawn: RGL
 Approved:
 Job:
 Sheet: **A-3**
 Of: Sheets

REVISIONS	BY

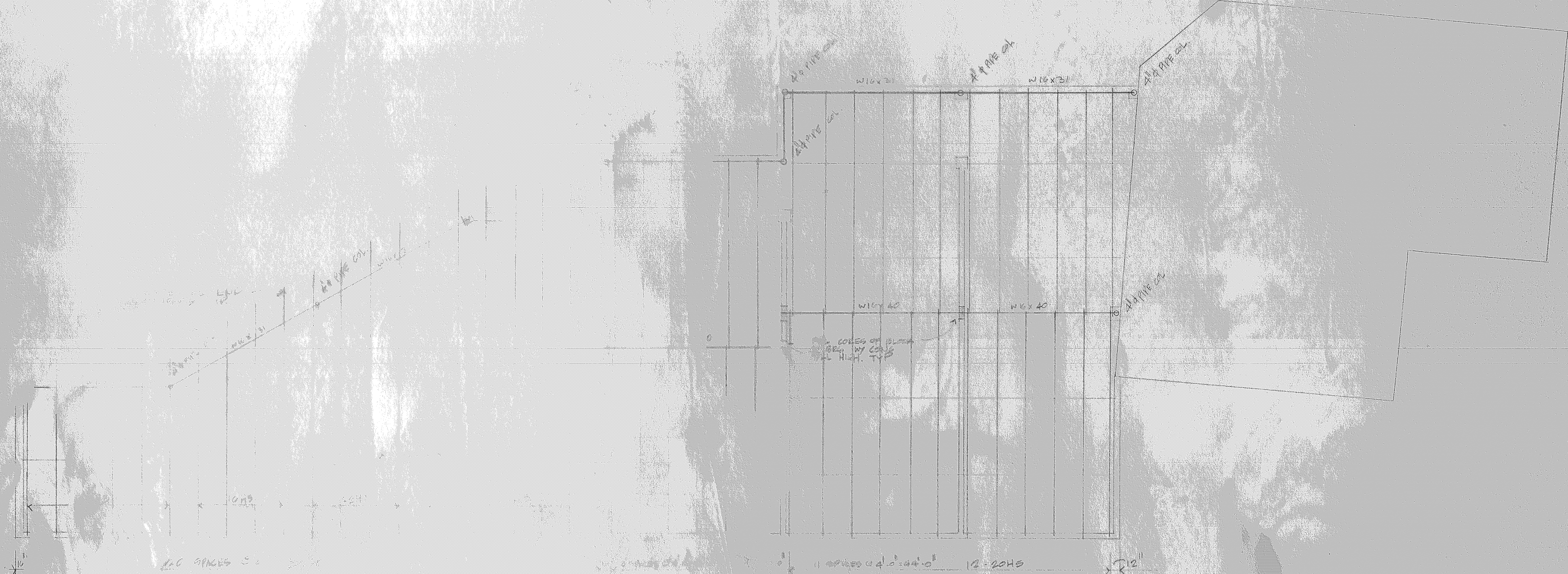
JAMES F. DARNELL, ARCHITECT
 P. O. BOX 6046 JONESBORO, ARKANSAS 72403 501-935-1241

BENTON CENTER
 Johnson & Caraway Road
 JONESBORO, ARKANSAS

Date: 1-15-86
 Scale: NOTED
 Drawn: RGL
 Approved:
 Job:
 Sheet: **S-1**
 Of: 5 Sheets



FOUNDATION PLAN
 1/31/86



ROOF FRAMING PLAN

FOUNDATION

REVISIONS	BY

JAMES F. DARNELL, ARCHITECT
 P. O. BOX 6046 JONESBORO, ARKANSAS 72403 501-935-1241

BENTON CENTER
 Johnson & Caraway Road
 JONESBORO, ARKANSAS

Date: 1-15-88
 Scale: 1/8" = 1'-0"
 Drawn: RGL
 Approved:
 Job:
 Sheet: **S-2**
 Of Sheets



ELECTRICAL FLOOR PLAN

1/2" = 1'-0"

REVISIONS	BY

JAMES F. DARNELL, ARCHITECT
 P. O. BOX 6046 JONESBORO, ARKANSAS 72403 501-935-1241

BENTON CENTER
 Johnson & Caraway Road
 JONESBORO, ARKANSAS

Date: 1-15-89
 Scale: 1/2" = 1'-0"
 Drawn: RGL
 Approved:
 Job:
 Sheet:
E-1
 Of Sheets



SITE DEVELOPMENT PLAN
8000 S.F.
TOTAL PARKING 40 CARS

BY	
DATE	
NO.	
JAMES F. DARNELL ARCHITECT	
P.O. BOX 9046 JONESBORO, ARKANSAS 72403 501-935-1241	
BENTON CENTER	
Johnson & Caraway Road	
JONESBORO, ARKANSAS	
DATE	
APP.	

- 1- Coil Light
- 1- ATM
- 1- Conv.
- 6- Lines



FLOOR PLAN

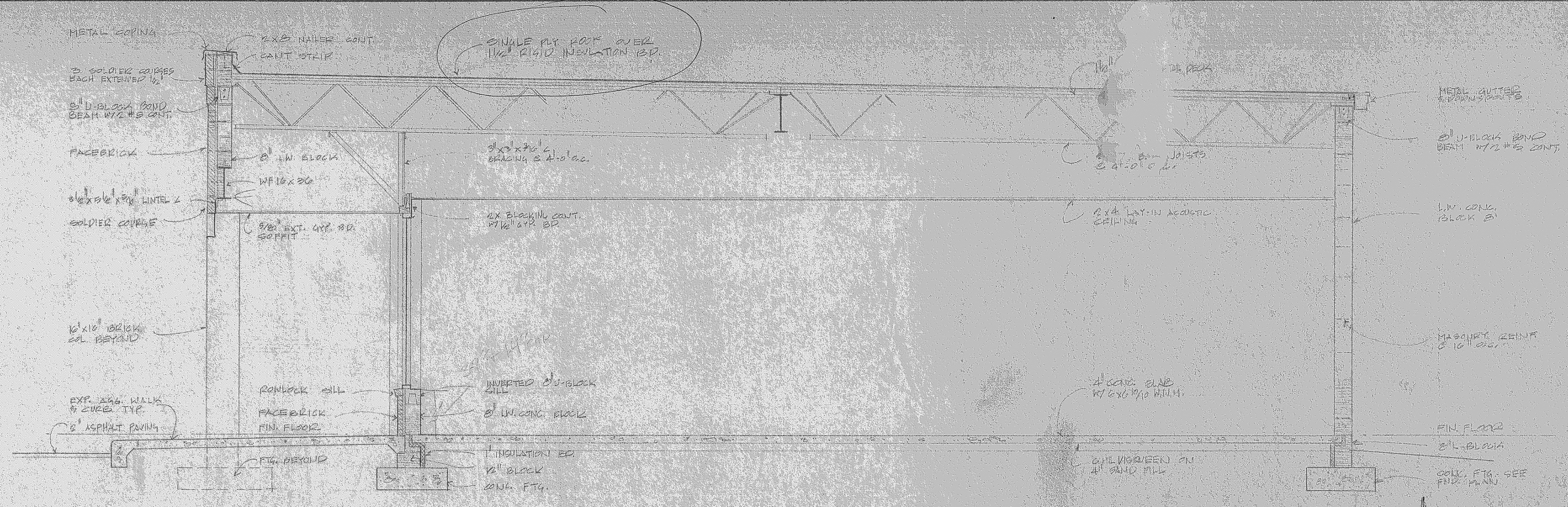
17000
Bill

NO.	REVISIONS	BY

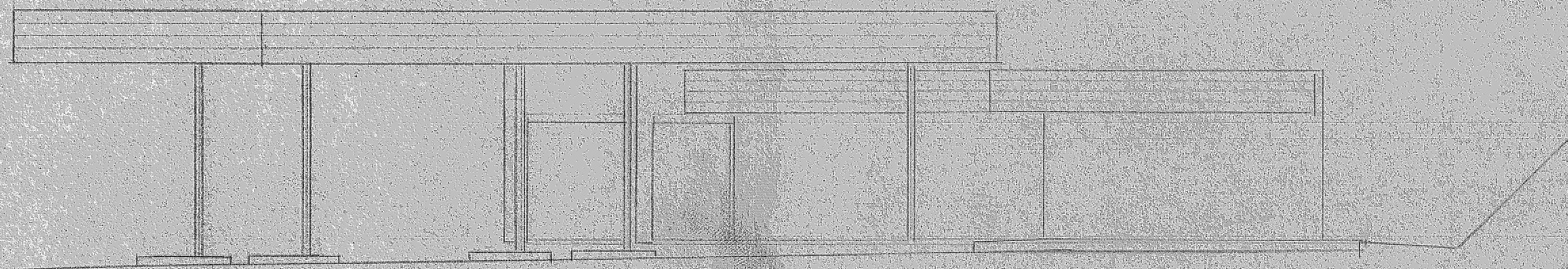
JAMES F. DARNELL, ARCHITECT
 P. O. BOX 6046 JONESBORO, ARKANSAS 72403 501-935-1241

BENTON CENTER
 Johnson & Caraway Road
 JONESBORO, ARKANSAS

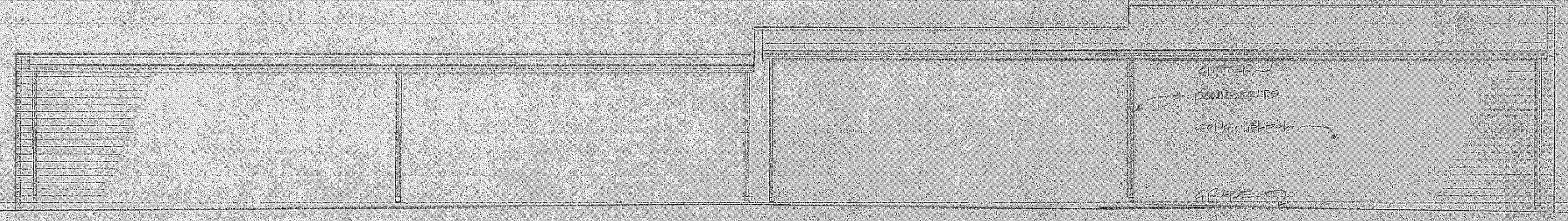
Date:	11-16-88
Scale:	1/8" = 1'-0"
Drawn:	JFD
Approved:	JFD
Job:	Benton Center
Sheet:	A-2
Of:	2



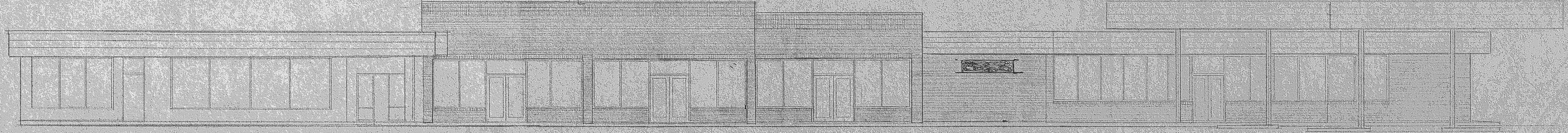
BUILDING CROSS SECTION



WEST ELEVATION



SOUTH ELEVATION



NORTH ELEVATION

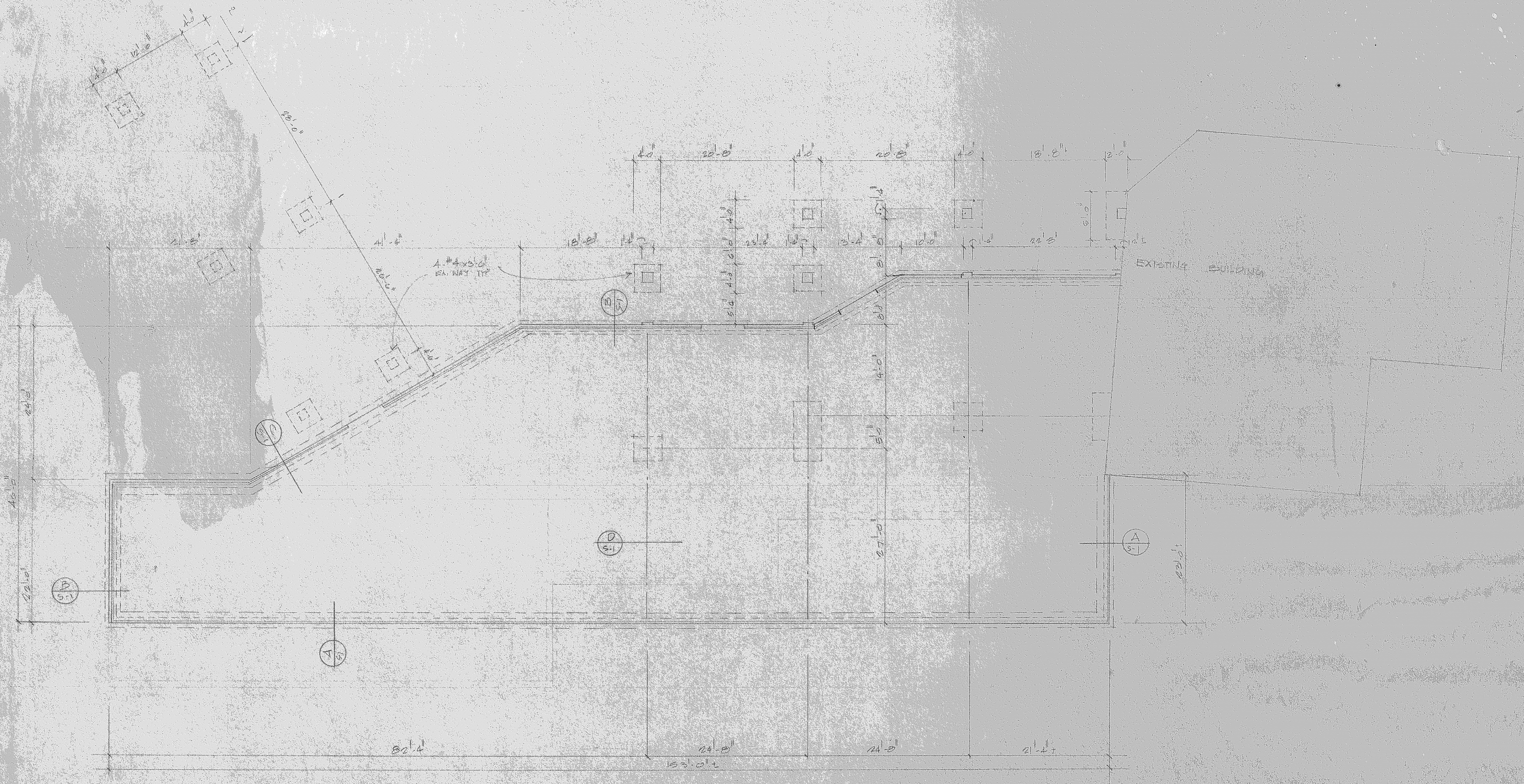
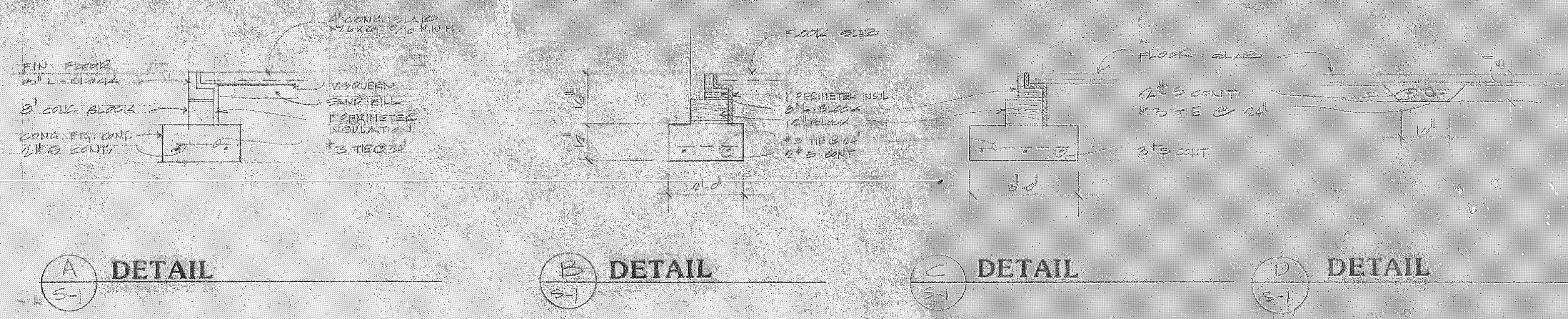
REVISION
JAMES F. DARNELL, ARCHITECT
 JONESBORO, ARKANSAS 72403 501-935-1241
 P. O. BOX 5046

BENTON CENTER
 Johnson & Caraway Road
 JONESBORO, ARKANSAS

Date: 1-25-52
 Scale: NOTED
 Drawn: RGL
 Approved:
 Job:
 Sheet: **A-3**
 Of: Sheets

17000 buck

28



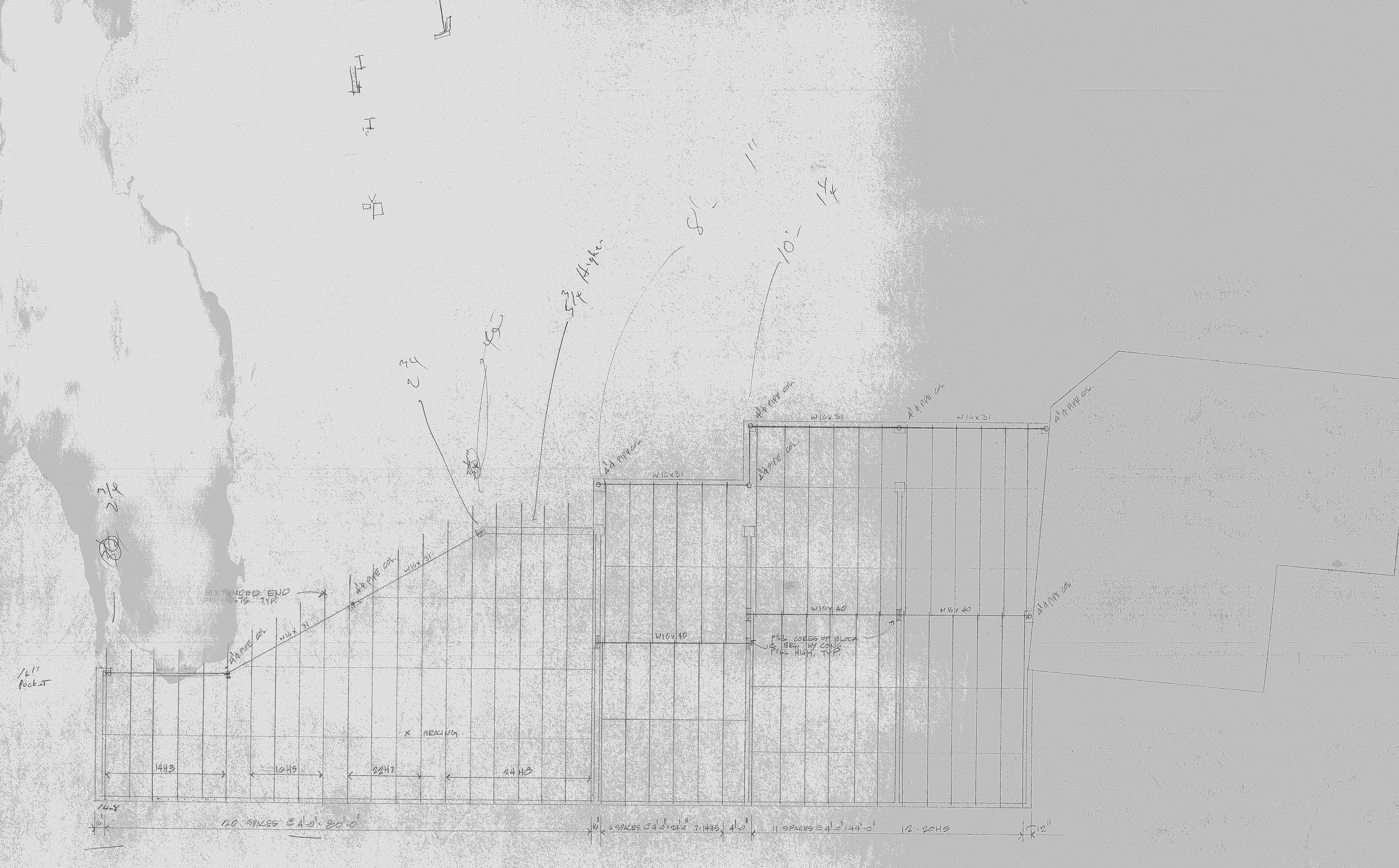
FOUNDATION PLAN

REVISIONS	BY

JAMES F. DARNELL, ARCHITECT
 P. O. BOX 6046 JONESBORO, ARKANSAS 72403 501-935-1241

BENTON CENTER
 Johnson & Caraway Road
 JONESBORO, ARKANSAS

Date: 1-19-88
 Scale: NOTED
 Drawn: RGL
 Approved:
 Job:
 Sheet: **S-1**
 Of: 5 Sheets



1/2" Pocket

2 3/4

14

EXTENDED END JOISTS 17"

W16x31

W16x31

W16x40

W16x31

W16x31

W16x40

W16x31

W16x40

FILL CORES OF BLOCK WITH FULL HIGH TIES

1443

1645

2247

2445

20 SPACES @ 1'-30" = 24'-0"

6 SPACES @ 1'-11" = 7'-6"

11 SPACES @ 1'-4" = 44'-0"

12 - 20HS

ROOF FRAMING PLAN

2 1/2" or more

REVISIONS	BY

JAMES F. DARNELL, ARCHITECT
 JONESBORO, ARKANSAS 72403
 P. O. BOX 6046 501-935-1241

BENTON CENTER
 Johnson & Caraway Road
 JONESBORO, ARKANSAS

Date: 1-15-88
 Scale: 1/8" = 1'-0"
 Drawn: RHL
 Approved:
 Job:
 Sheet: **S-2**
 Of: 2 Sheets



ELECTRICAL FLOOR PLAN

1/2" = 1'-0"

REVISIONS	BY

JAMES F. DARNELL, ARCHITECT
 P. O. BOX 6046 JONESBORO, ARKANSAS 72403 501-935-1241

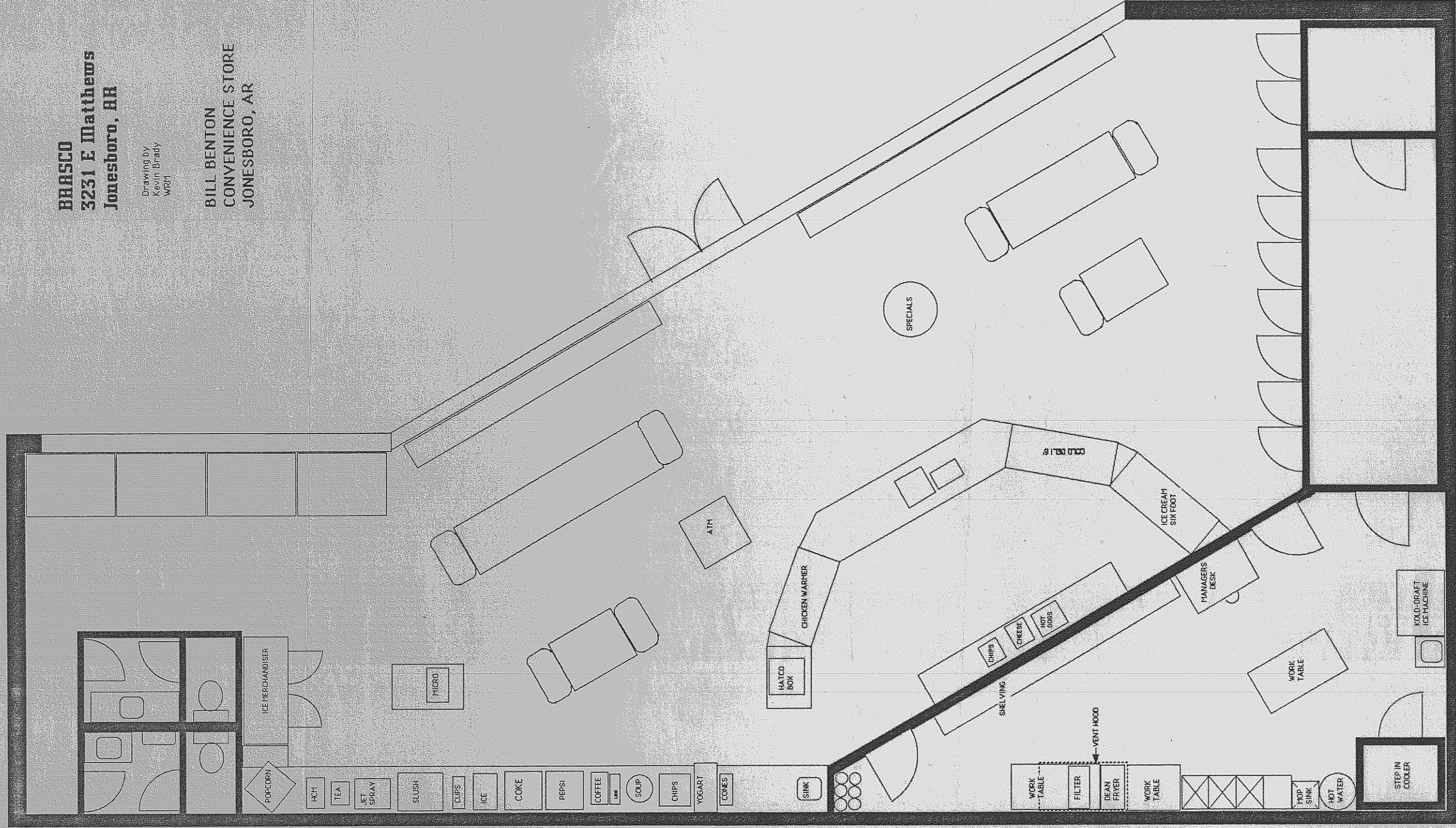
BENTON CENTER
 Johnson & Caraway Road
 JONESBORO, ARKANSAS

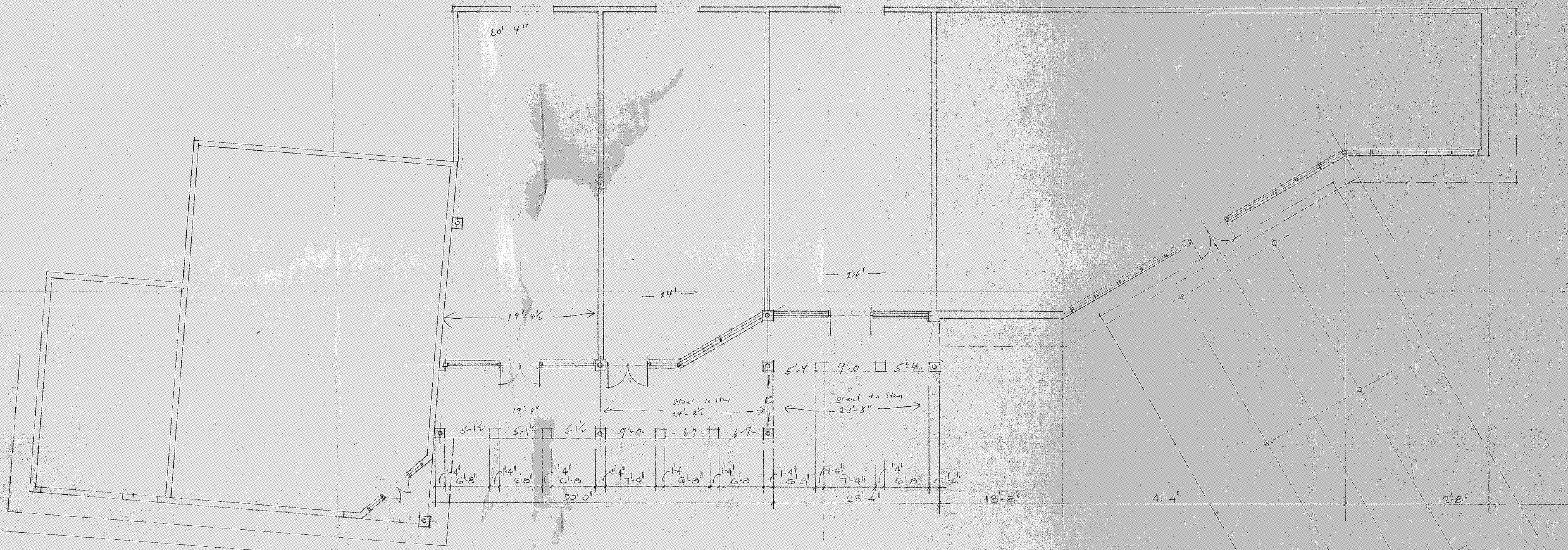
Date: 1-15-88
 Scale: 1/2" = 1'-0"
 Drawn: RCL
 Approved:
 Job:
 Sheet:
E-1
 Of Sheets

BRASCO
3231 E Matthews
Jonesboro, AR

Drawing by
Kevin Brady
WBT

BILL BENTON
CONVENIENCE STORE
JONESBORO, AR





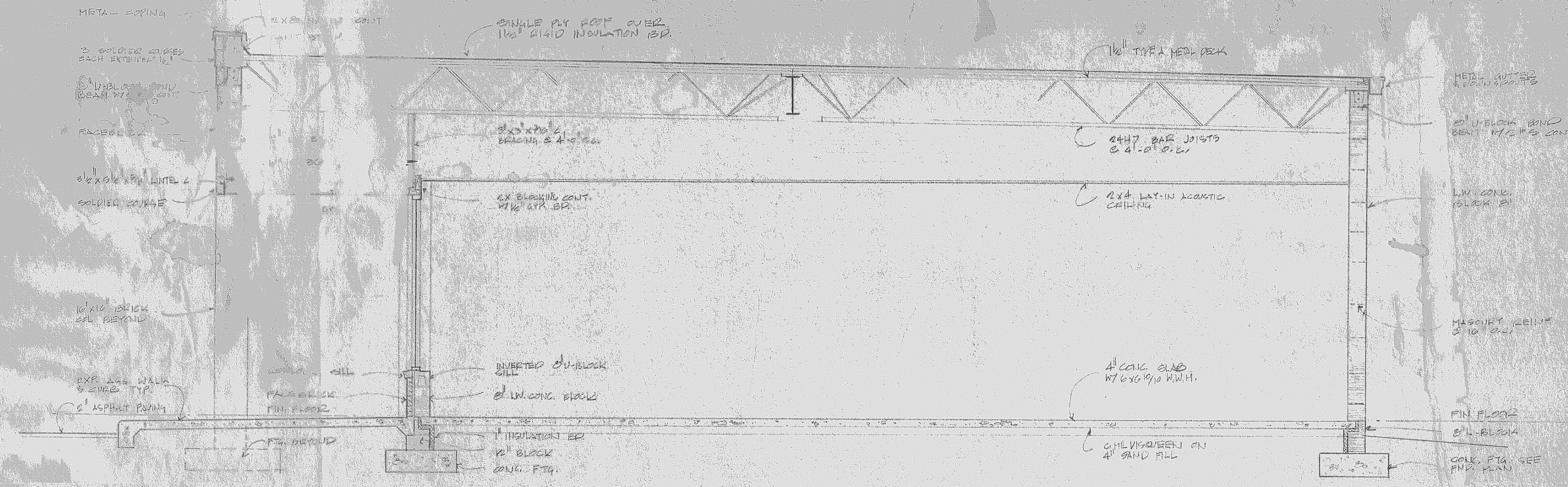
FLOOR PLAN $\frac{1}{8}'' = 1'-0''$



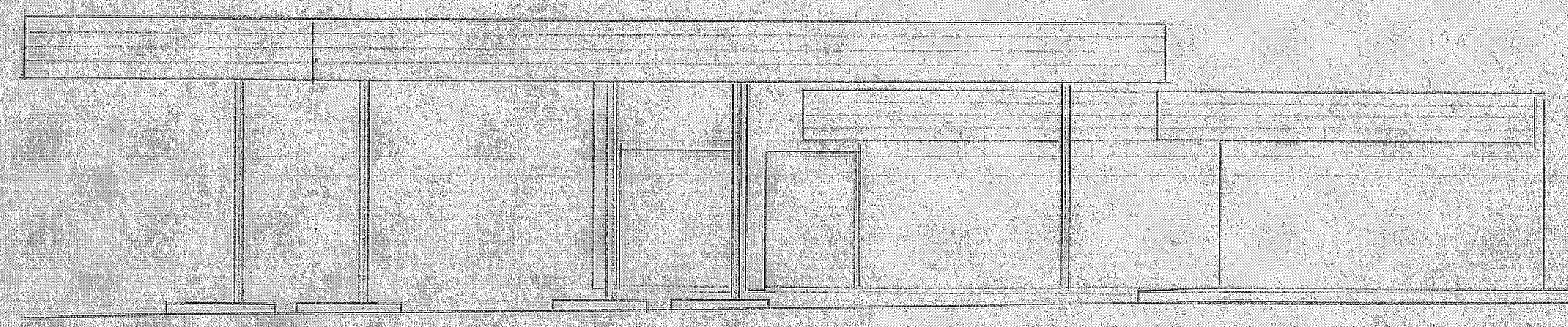
ELEVATION $\frac{1}{8}'' = 1'-0''$

178" from Bottom of Soffit to side wall
 99" from Bottom of corner soffit

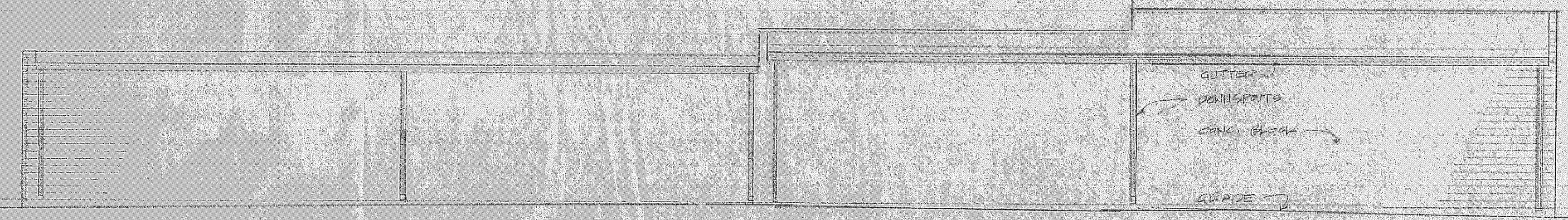
115 1/2" from Top of wall to Bottom of steel Brick ledge
 112 on plan



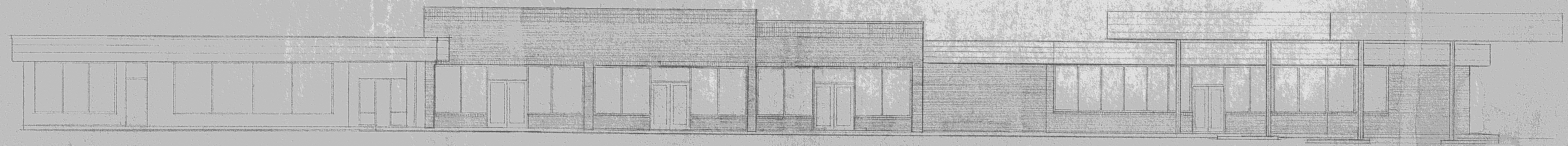
BUILDING CROSS SECTION



WEST ELEVATION



SOUTH ELEVATION



NORTH ELEVATION

REVISIONS	BY

JAMES F. DARNELL, ARCHITECT
 P. O. BOX 6046 JONESBORO, ARKANSAS 72403 501-935-1241

BENTON CENTER
 Johnson & Caraway Road
 JONESBORO, ARKANSAS

Date: 1-15-88
 Scale: NOTED
 Drawn: RGL
 Approved:
 Job:
 Sheet: **A-3**
 Of: 3 Sheets

REVISIONS	BY

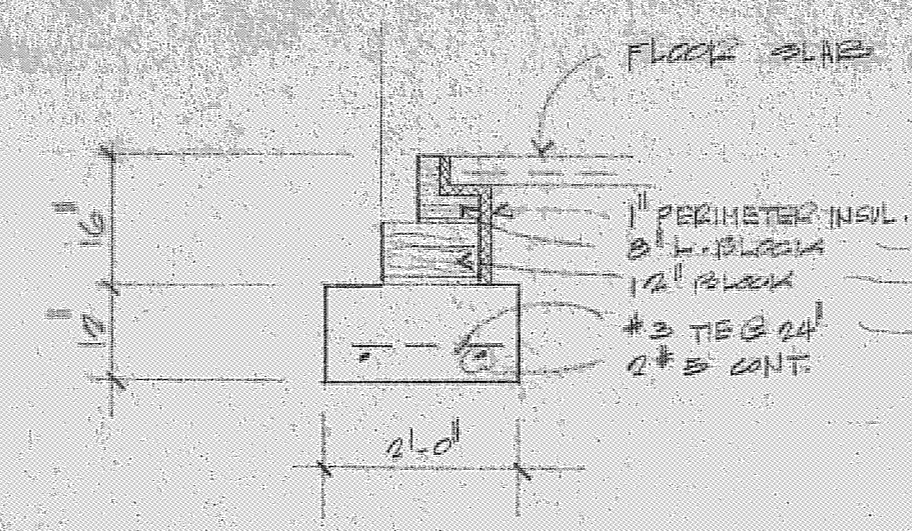
JAMES F. DARNELL, ARCHITECT
 P.O. BOX 6046 JONESBORO, ARKANSAS 72403
 501-935-1241

BENTON CENTER
 Johnson & Caraway Road
 JONESBORO, ARKANSAS

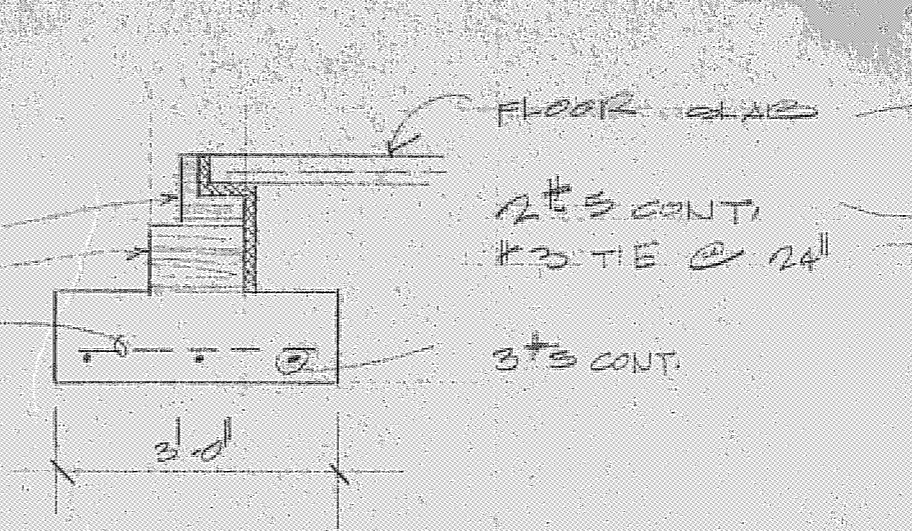
Date: 1-15-82
 Scale: NOTED
 Drawn: RGL
 Approved:
 Job:
 Sheet: **S-1**
 Of: Sheets



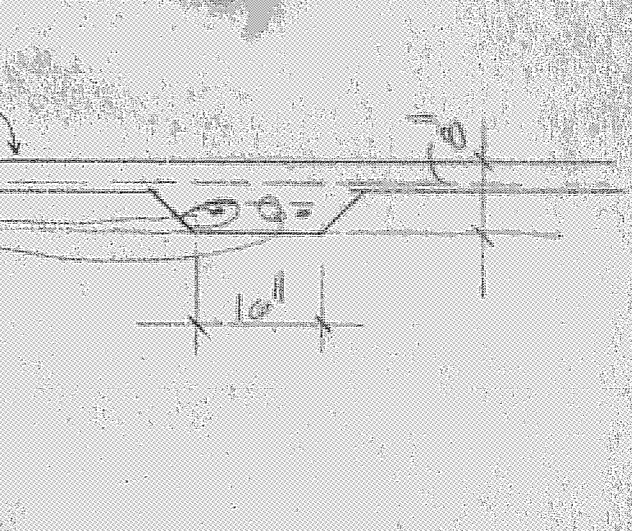
A 1-E1 VL
 S-1



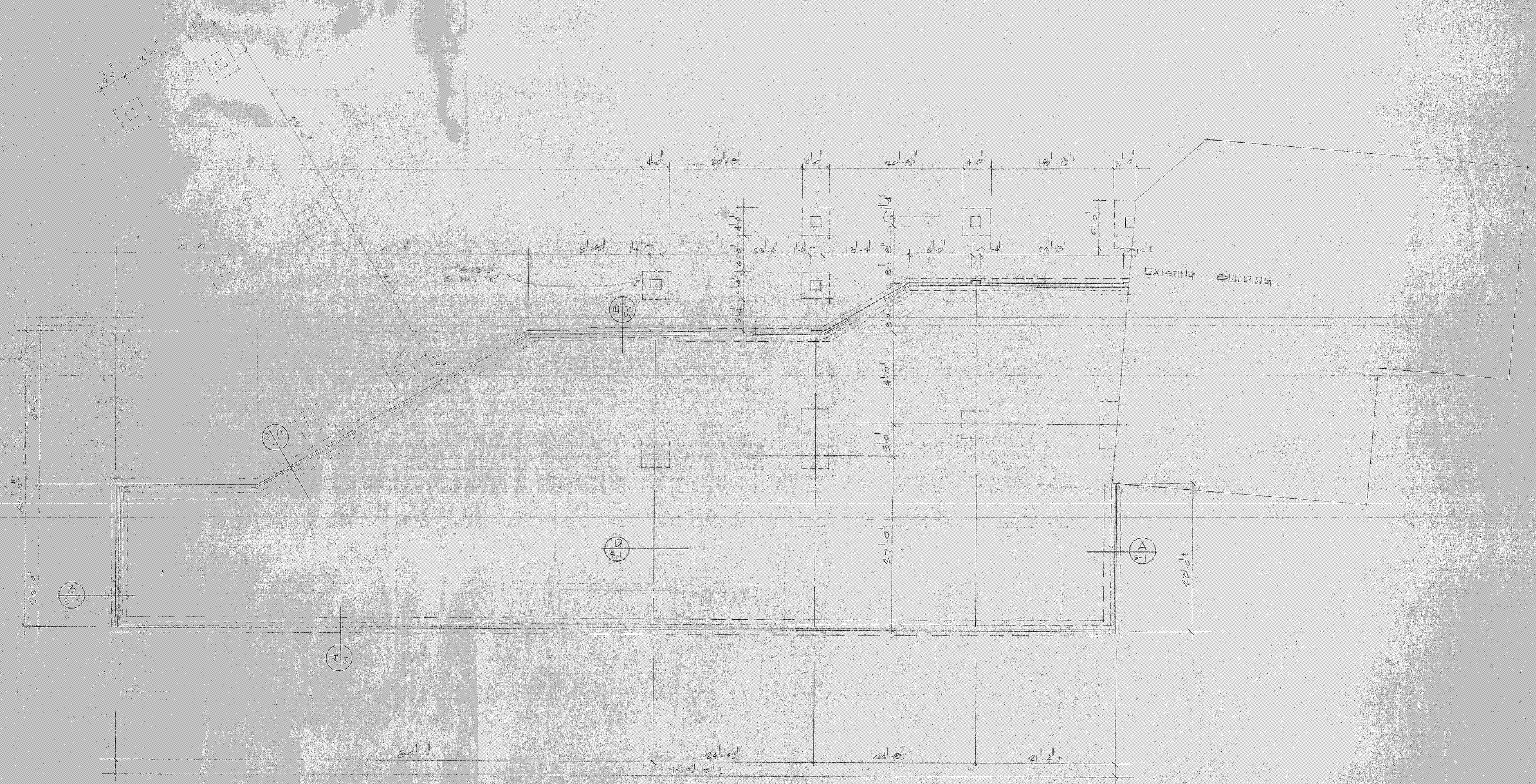
B DETAIL
 S-1



C DETAIL
 S-1



D DETAIL
 S-1

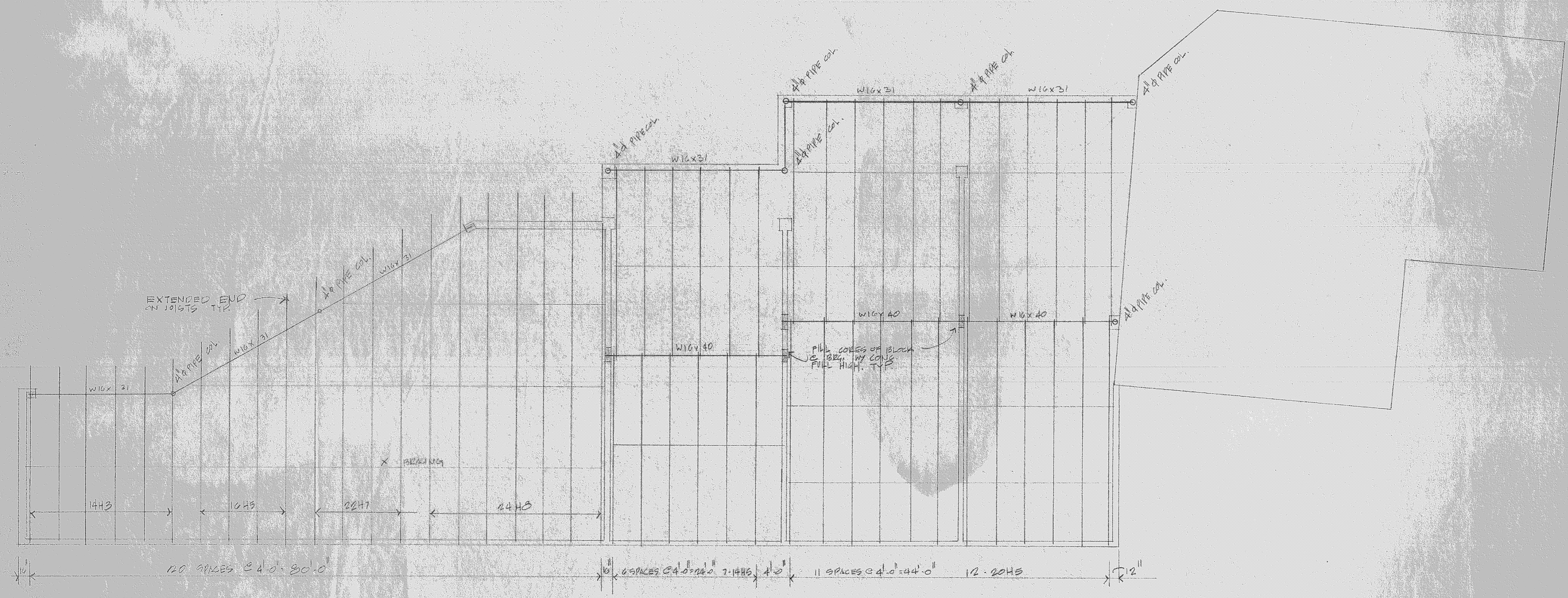


FOUNDATION PLAN

REVISIONS	BY

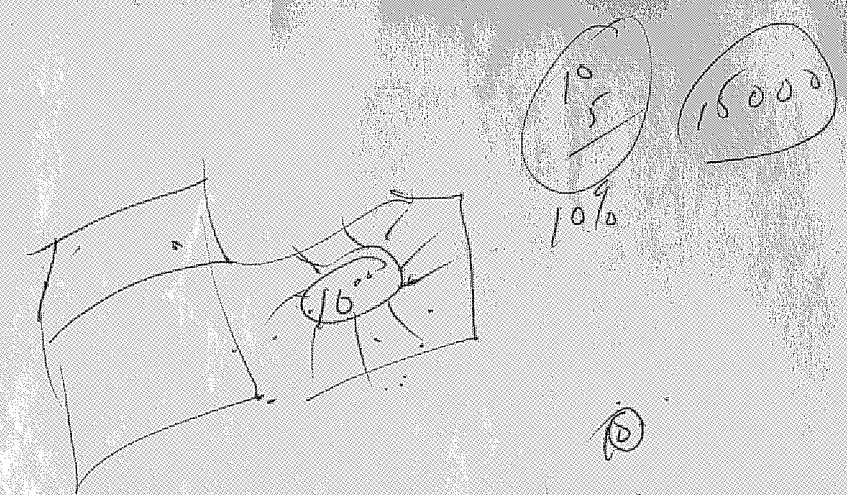
JAMES F. DARNELL, ARCHITECT
 P. O. BOX 6046 JONESBORO, ARKANSAS 72403 501-985-1241

BENTON CENTER
 Johnson & Caraway Road
 JONESBORO, ARKANSAS

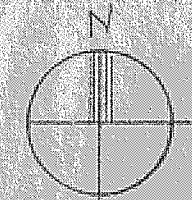
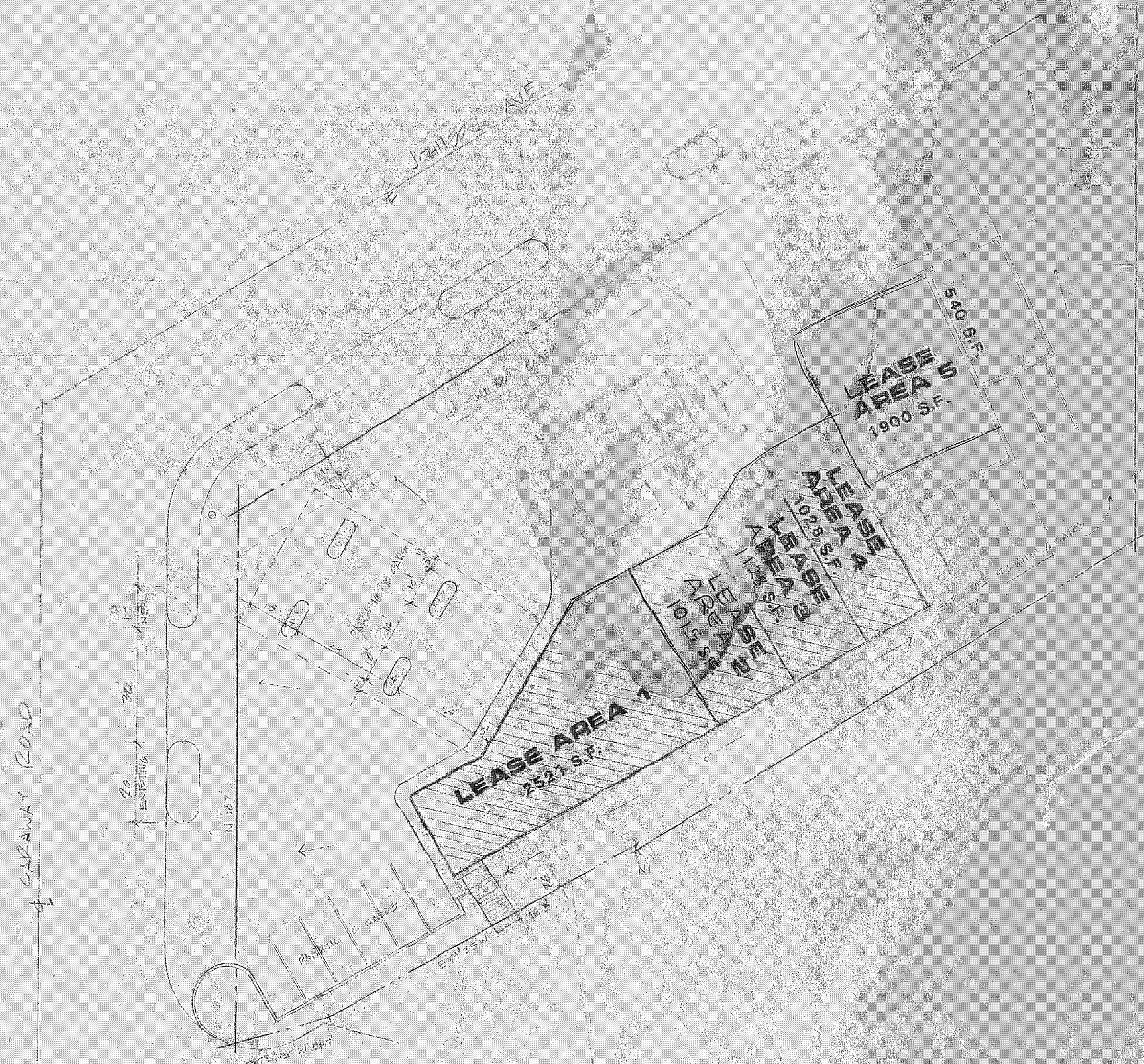


ROOF FRAMING PLAN

Date:	1-15-80
Scale:	1/8" = 1'-0"
Drawn:	RHL
Approved:	
Job:	
Sheet:	S-2
Of	5 Sheets



COV
 RAV
 #
 Pave
 Rest
 Pm



SITE DEVELOPMENT PLAN

8000 S.F.
 TOTAL PARKING 40 CARS

REVISIONS	BY

JAMES F. DARNELL, ARCHITECT
 P.O. BOX 6046 JONESBORO, ARKANSAS 72403 501-935-1241

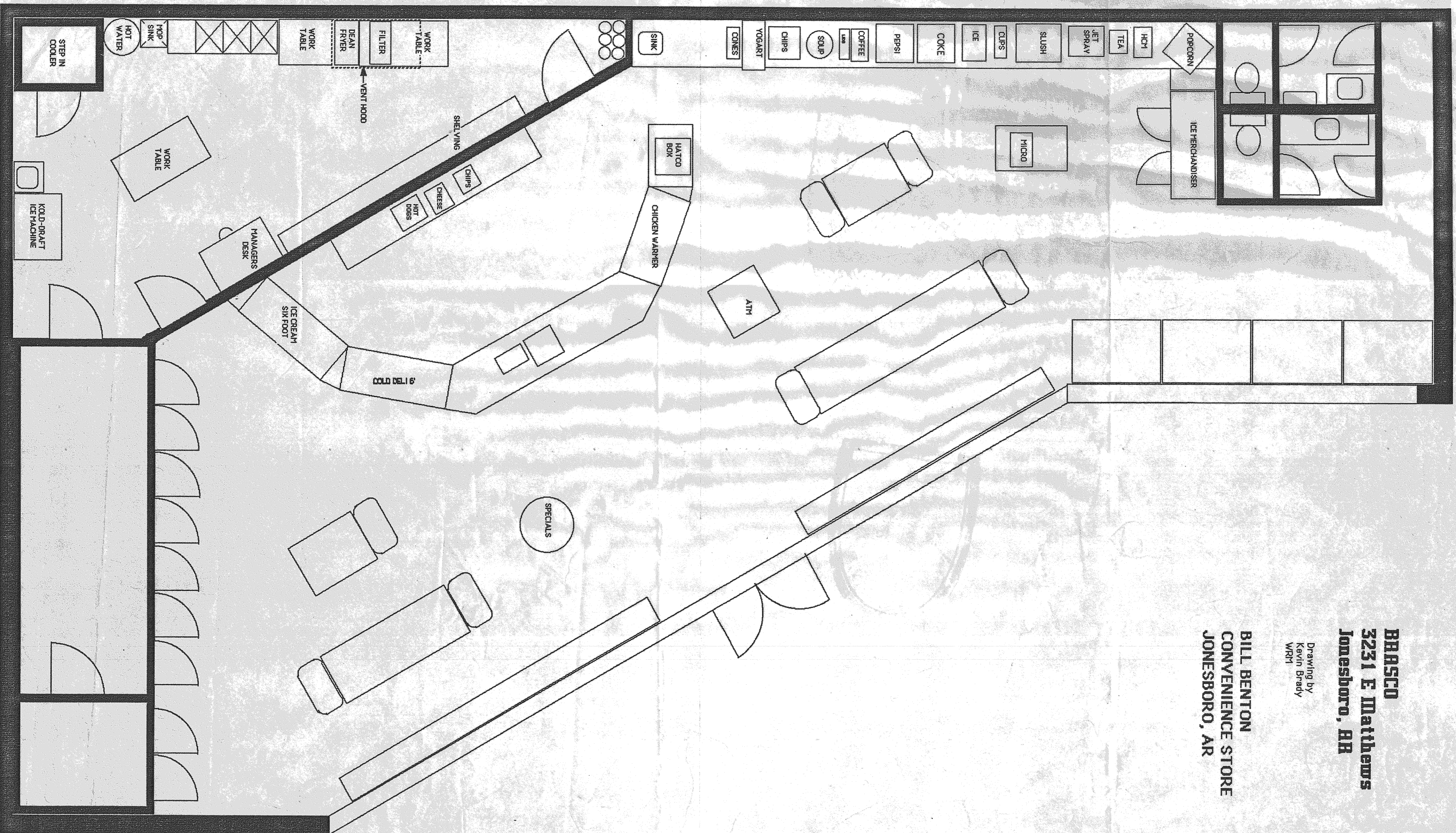
BENTON CENTER
 Johnson & Caraway Road
 JONESBORO, ARKANSAS

Date:

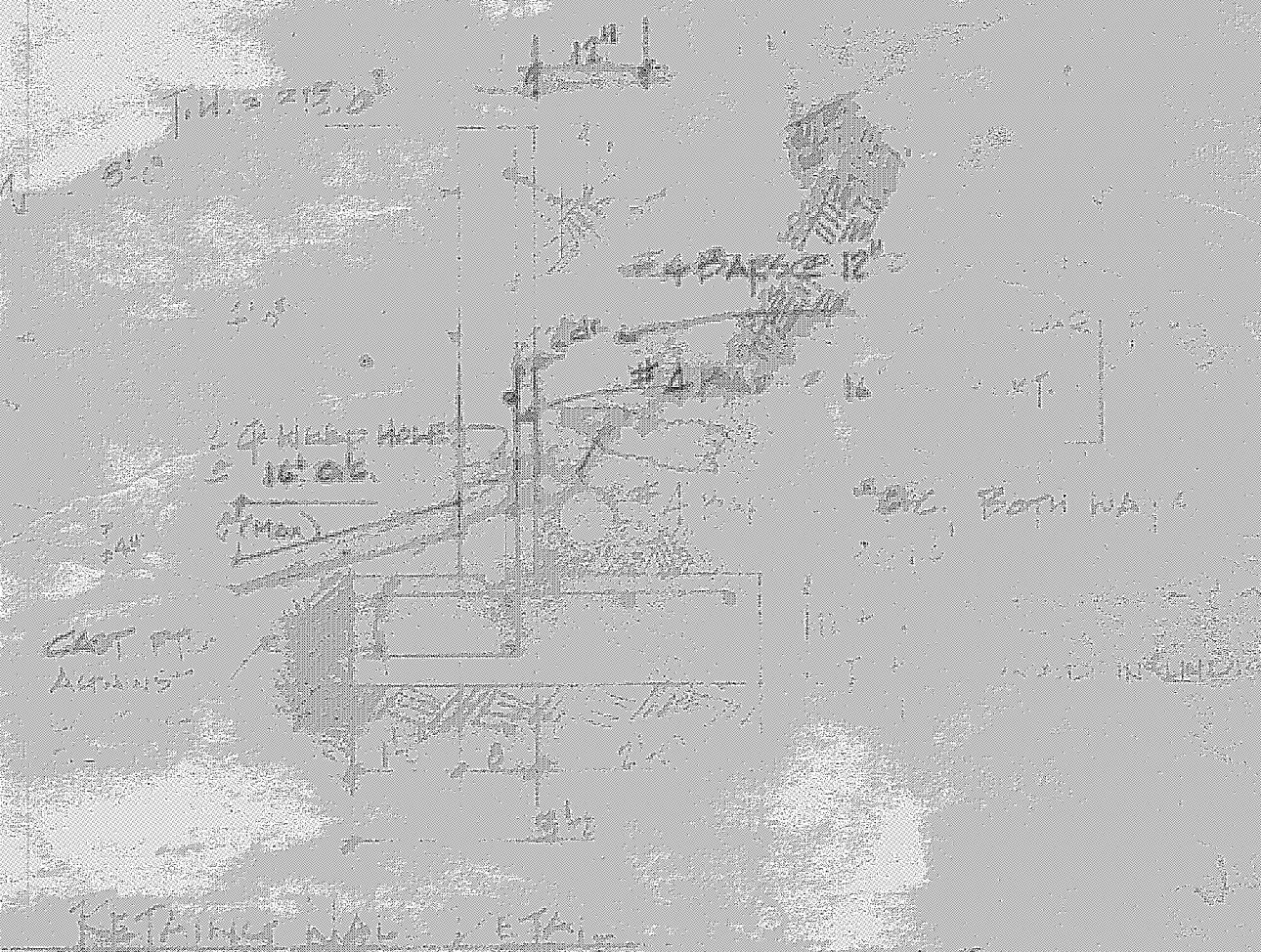
BRAASCO
3231 E Matthews
Jonesboro, AR

Drawing by
Kevin Brady
WRM

BILL BENTON
CONVENIENCE STORE
JONESBORO, AR



972-1213
 Alfred Lee
 Rick White



- 1. CONC.
- 2. STEEL F.
- 3. SOIL BEAM



Associated Engineering Co., Inc.	
Jonesboro	Arkansas
Title: Building Plans	
Jonesboro	Arkansas
28, 196	196

- CARA MAX

CARAWAY ROAD

20' EXISTING
30' NEW

N 187'

10411/22 J

WE

11 57° 33' E 262.31'

EASEMENT

NEW ASPHALT DRIVEWAY

PARKING 8 CARS

REMOVE EXIST CURB
NEW CURB TO MATCH EXIST

LEASE D
AREA D
1900 S.F.

540 S.F.

LEASE A
AREA A
1025 S.F.

LEASE B
AREA B
1128 S.F.

LEASE C
AREA C
1015 S.F.

LEASE AREA A
2521 S.F.

EXISTING PARKING 6 CARS

9 27° 33' W 150'

PARKING 10 CARS

51' 50"

